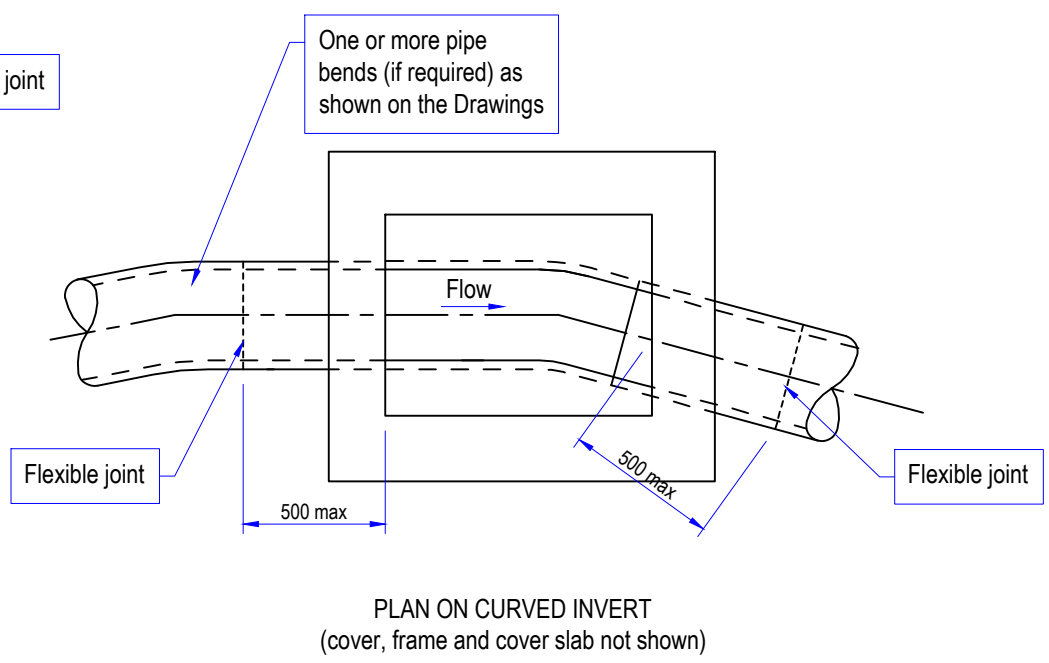
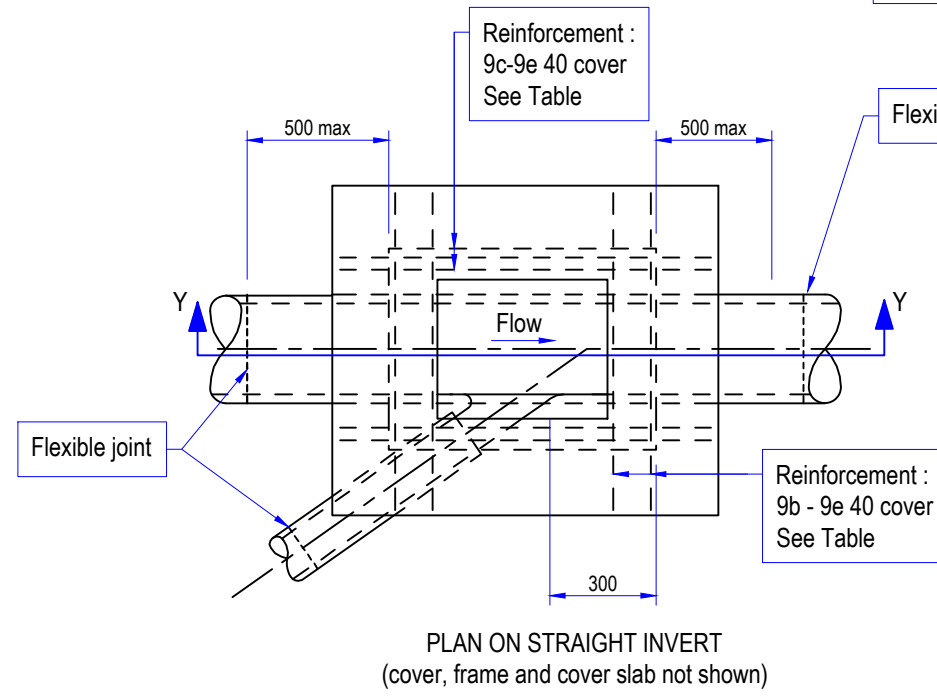



- NOTES**
1. ALL DIMENSIONS ARE IN MILLIMETERS.
 2. Chamber walls 225 thick to be constructed in class B clay engineering bricks to SHW Series 2400 in designation (i) mortar or in-situ ST4 concrete to SHW, Clause 2602.
 3. See SHW, sub-Clause 507.7 regarding backfilling/surround to chamber.
 4. Benching width to be 300 for branch connection



**FOR PIPES 300 MAX. DIAMETER
MAX. DEPTH TO INVERT 1200
UP TO SINGLE BRANCH NOT EXCEEDING 225**

CHAMBER SUB-TYPE					
Sub-Type	No. of Branches	Length L	Width W	Max. Pipe DN	Reinforcement T20 bars at 50c/c
9a	0	450	450	150	Nil
9b	0	450	600	300	4 No. 800 long
9c	1	1000	600	150	10 No. 950 long 4 No. 1350 long
9d	1	1000	750	300	10 No. 1100 long 6 No. 1350 long
9e	2	1000	750	150	

REV	DATE	REVISION DESCRIPTION / DETAILS	DRN BY	CHKD BY	APRVD BY
 <p>160 TOOLEY STREET LONDON SE1P 5LX</p>					
PROJECT: SOUTHWARK STREETSCAPE DESIGN MANUAL STANDARD DETAILS					
TITLE: TYPE 9 CHAMBER (BRICK OR IN-SITU CONCRETE SHALLOW INSPECTION CHAMBER)					
STATUS:	DRAFT			DRAWN	SR
SCALE:	N.T.S.			CHECKED	GL
DRAWING NO:	LBS/500/21			APPROVED	R0
DATE DRAWN:	AUGUST 2017		DATE ISSUED:	20 Feb 2019	

S:\HIGHWAYS MAINTENANCE\SSM\2. SSM\CONTENT_ARCH\REVISED\CHAMBER DETAILS\DRWG\BS-500-21 TYPE 9 CHAMBER (SHALLOW INSPECTION CHAMBER).DWG