

WINTER MAINTENANCE POLICY AND SERVICE PLAN 2021/22

Version 1-0

www.southwark.gov.uk

LONDON BOROUGH OF SOUTHWARK

WINTER MAINTENANCE POLICY AND SERVICE PLAN FOR 2021-22

TABLE OF CONTENT

1	INTRODUCTION	3
1.1	Scope and Purpose	3
1.2	Duty Under the Highways Act 1980	4
1.3	Our Approach to Winter Service Planning	4
2	The Service	5
3	Winter Risk Period and Priorities	6
3.1	Stand by Period	6
3.2	Carriageways	6
3.3	Footways	6
3.4	Cycle routes	6
4	Organisational Arrangement	7
4.1	Roles and Responsibilities	7
4.2	Pre-season Preparations	7
4.3	Response and treatment times	8
4.4	Performance Monitoring	9
5	Weather Information and Decision Making	10
5.1	Performance Monitoring	10
5.2	Decision Making Procedure	10
5.3	Precautionary Salting Procedure	13
5.4	Reported Ice on Precautionary Salting Route	14
6	Treatment Requirements	15
6.1	Precautionary Salting	15
6.2	Treatment of Ice	15
6.3	Treatment of Snow	15
6.4	Treatment of Hard Packed Snow and Ice	15
6.5	Use of Salt/Sand	15
6.6	Footway Treatment	15
6.7	Estates Treatment	16
6.8	Maintenance after Severe Weather	16
7	Communication	17
7.1	Operational Communications	17
7.2	Co-ordination with Adjacent Authorities	17
7.3	Enquiries and Complaints	17
8	Plants, Vehicles, Equipment and Resources	18
8.1	Salt	18
8.2	Minimum Stock Levels and Resilience Network	18
8.3	Salt Bins	18
8.4	Labour, Vehicles and Plants	18
9	Health, Safety and Environment	19
9.1	Health and Safety	19
9.2	Environment	19
10	Appendices	20
	Appendix A: Distribution List for 2021/22	20
	Appendix B: Winter Service – Daily Log Sheet	20
	Appendix C: Winter Service – Daily Decision Justification Log	21
	Appendix D: Winter Service Situation Report	22
	Appendix E: Carriageway Priority Routes	23
	Appendix F: Vulnerable sites and priority footways	28
	Appendix G: Location of Salt Bins	43
	Appendix H: Weather Information Contact Details	48
	Appendix I: Contractor and Client Standby Officer Rota*	49
	Appendix J: Key Contacts	50
	Appendix K: Review of Southwark's resilience routes	51
	Appendix L: Borough gritting maps	53

Quality Control

Document Reference: WM/2021/22-01

Version	Status	Prepared	Date	Checked	Date	Approved	Date
Original	Approved	Ken Sorhaindo	19/11/21	Alwyn Samuel	26/11/21	Dale Foden	27/11/21

CIRCULATION LIST

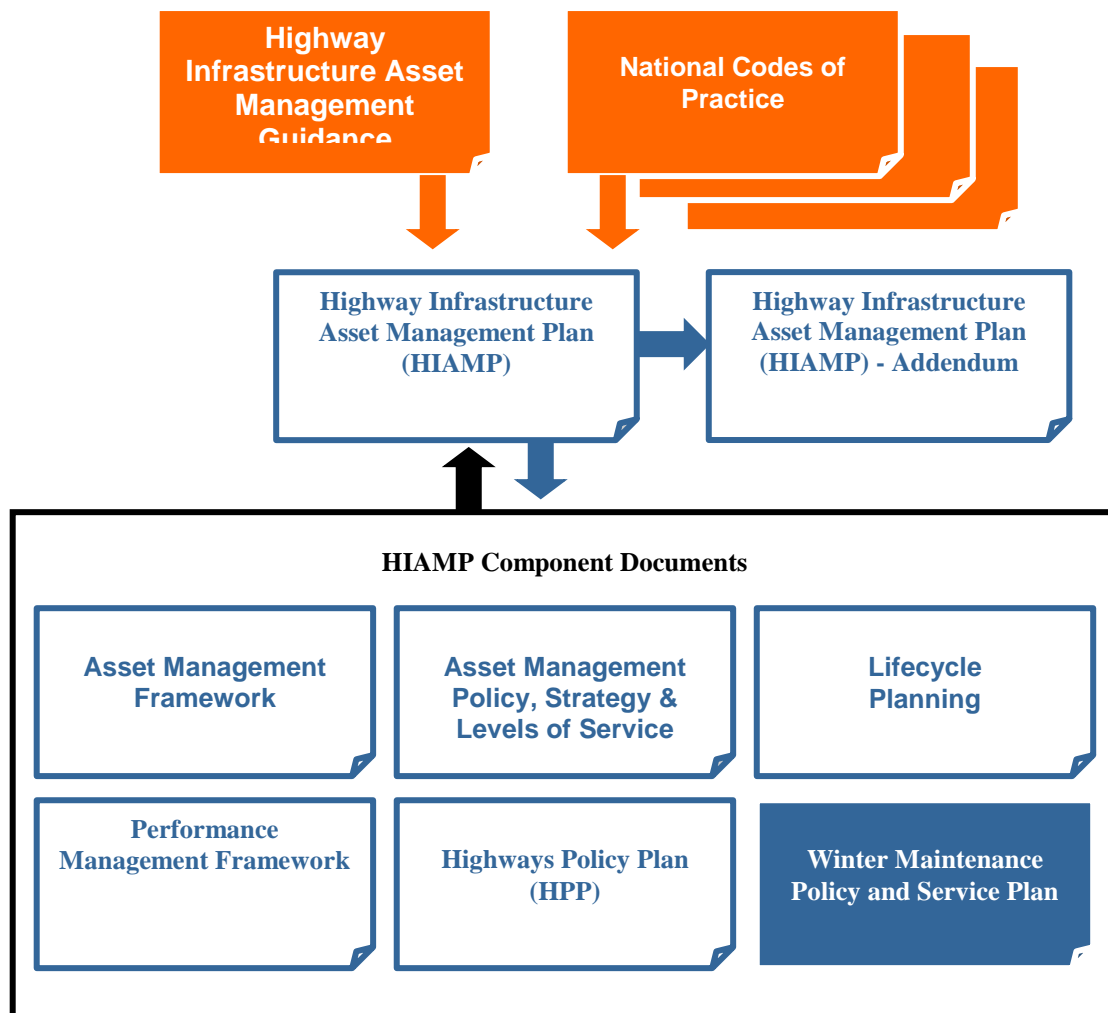
Internal
Strategic Director of Environment and Leisure Director of Environment Head of Highways Highway Maintenance Manager Winter Service Manager (WSM) Client Standby Officers (CSO) Departmental Finance Manager Emergency Planning Manager Southwark Cleaning Communications Team (Council website)
External
Contractors FM Conway Ltd.
External Authorities London Borough of Bromley London Borough of Lewisham London Borough of Croydon London Borough of Lambeth Transport for London

1 INTRODUCTION

1.1 Scope and Purpose

This document will form a component part of the emerging HIAMP document (see Figure 1). The HIAMP will set the framework for Policy, Strategy and Levels of Service, to align with the corporate vision and demonstrate the contribution asset management makes towards achieving this vision.

Figure 1 - Relationship of HIAMP Documentation



This Winter Maintenance Policy and Service Plan (the Plan) describes the purpose, procedures, and operational arrangements for the delivery of winter service on the London Borough of Southwark's Road and Footway Network. The Council's primary objective of the Plan is to keep pre-defined and prioritised carriageways, footways and other specified locations free from ice and snow and to facilitate as safe a journey as conditions and resources will allow.

The Plan is reviewed each year in advance of the winter period and improvements made based on lessons learnt and operational changes that may have occurred during the intervening period. This document has been prepared in anticipation of severe cold weather conditions that may prevail in the 2021/22 winter season.

1.2 Duty Under the Highways Act 1980

Highway Authorities have a duty under Section 41 1(A) of the Highways Act 1980 to;

“In particular, a highway authority is under a duty to ensure, so far as is reasonably practicable, that safe passage along a highway is not endangered by snow or ice.”

Highway Authorities have a duty under section 150 (1) of the Highways Act 1980 to minimise delays and accidents caused by adverse weather conditions by removing obstructions such as snow and ice, from the highway. In order to fulfill this duty the following may be taken into consideration

- (a) the character of the highway, and the nature and amount of the traffic by which it is ordinarily used,
- (b) the nature and extent of the obstruction, and
- (c) the resources of manpower, vehicles and equipment for the time being available to the highway authority for work on highways and the extent to which those resources are being, or need to be, employed elsewhere by that authority on such work.

Southwark Council considers this service as essential in maintaining communication and enabling everyday life to continue. It will therefore treat its road network including carriageway and areas of footway according to their importance in the highway hierarchy and the prevailing weather conditions.

1.3 Our Approach to Winter Service Planning

The Plan as set out in this document has been developed based on the following approach:

- A review on the effectiveness of the previous winter operations and where appropriate the introduction of improvements into the 2021-22 Service Plan.
- Due consideration of the lessons learnt from various reviews undertaken from the past winter seasons and documents produced to help enhance London's resilience in severe winter weather. We have referred to '*Keep London Moving Through Severe Winter Weather*' published by the Gritting Panel Review Team and the '*Practical steps for London Highway Authorities*' a supplementary document drafted by the London Winter Service Review Steering Group. The team has also taken the various guidance issued by the National Winter Service Research Group (NWSRG) into consideration in amending this year's service plan.
- Establishing and maintaining salt stock levels including usage reporting procedures.
- Establishing treatment routes for carriageways and footways based on the network established in previous winter operations and additional vulnerable locations.
- Setting in place weather prediction service arrangements whereby forecasts are provided during the standby period with increased frequencies during severe weather periods.
- Operational arrangements including the roles of various service areas; prescribed scenarios for intervention levels; carriageway and footway treatment and communications
- Stand by and out of hours procedures.
- Due consideration of 'Well Managed Highway Infrastructure' published in October 2016 particularly as it relates to the treatment of cycle routes.

- Impact of Covid-19 operational arrangements and new facilities for public testing
- Impact of LTN's and other traffic improvements affecting gritter access

2 The Service

Winter services are provided by the Highways Division in conjunction with the Street Cleansing Team; responsible for footway salting and FM Conway, the Council's Term Maintenance Contractor; undertaking carriageway treatments. The services are planned to ensure adequate resources are made available to respond in the event of adverse weather conditions impacting on public highway.

Actions arising from the Plan will mainly be taken on the basis of road temperature and not air temperature since roads retain heat and cool slowly. Salting is considered when road temperatures are such that moisture is present or likely to be present to form ice. Frost does not usually affect road surfaces until late evening or early morning. Salting will normally be carried out outside peak traffic conditions and overnight where practicable.

The service can be briefly described as precautionary salting or treatment of the highway network based on pre-established priority system, temperatures levels and ice or snow forecast. This service will be provided 7 days a week, 24 hours a day and shall include the Christmas period and Bank Holidays. The purpose of this service is to minimise accidents and disruption caused by the weather and enable the Authority to discharge its responsibilities and obligations.

Winter services for other areas of the council are covered as follows:

Schools	All schools within Southwark will be contacted in advance of the winter season to determine any salt requirements which will be delivered at cost.
Parks	Parks & Open Spaces - The parks management team have confirmed that they will be adopting a partial salting approach for the 21/22 winter season. This will include the application of salt to targeted high risk locations only where ice/snow are apparent during the day. Accordingly, the vast majority of hard surfaces within parks will remain untreated. Therefore, the public are advised to think carefully about the risks of slipping over before entering any park and consider the option of taking an alternative safer route. If there is very severe winter weather, Southwark's highways will have priority access to salt and grit stocks and parks will remain untreated.
Cems/crems	In order to ensure this essential service remains operational salt will be applied where required.

For more information about the parks winter service approach visit:

[Parks Winter Service Approach](#)

3 Winter Risk Period and Priorities

3.1 Stand by Period

The Council's winter service period for the 2021/22 season runs from Thursday 1st October 2021 to Friday 30th April 2022. The stand by period will be adjusted as weather conditions will dictate.

This period has been categorised into three operational periods on the basis of risk as detailed in table 1 below.

Table 1: Probable alert scenarios

Period	Definition	Time	Weather conditions
High	A period of standby to ensure salting starts within one hour of instruction with continuous salting.	December, January, Feb and March	Adverse or Severe - probable
Low	Standby with possible continuous salting	November	Adverse or Severe – may occur
Marginal	Call out	October and April	Adverse or Severe – not expected

3.2 Carriageways

Frost Susceptible Roads (FSR): Roads with a steep gradient primarily in the southern part of the borough and generally north facing. Roads in the north part of the borough close to the Thames Embankment are also included.

Priority Roads: These include principal traffic and main bus routes throughout the borough. These together form a basic highway network for travel between town centres within the borough and for travel into and out of the borough.

Resilience Network: These incorporate Southwark's defined part of the pan-London resilience network as recommended in the United Kingdom Road Liaison Group (UKRLG) review. This defines the minimum road network within the Greater London Authority (GLA) that are to be kept opened at all times during severe winter weather to allow essential services to operate reliably and safely and to 'Keep London Moving'. The network also includes roads to be treated in exceptional weather conditions even when salt supplies are scarce. It includes a combination of TfL, Borough and private roads. It further ensures continuity across borough boundaries, access to strategic road network and facilitates basic services by London Buses. The resilience network also covers significant parts of Southwark's frost susceptible and priority roads as shown in Appendix E.

3.3 Footways

Major pedestrian routes, town centres and access to hospitals, medical centres, day centres, residential homes, footbridges and other specified critical areas will be treated as a priority before any other footway as conditions and resources will permit.

3.4 Cycle routes

The dedicated treatment of all cycle routes has been evaluated but has been considered uneconomic due to the associated costs for the extent of the Southwark cycle network that would require to be treated. Our Cleaning team will however treat Cycleway C10 with a liquid de-icer. Cycleway C10 runs east-west across the Borough from Elephant & Castle area to near South Bermondsey station, approximately 4.7km in length on a mixture of footways, footpaths

and carriageway. All other non-segregated cycle routes forming part of the existing road will be pre-treated as part of the normal salting regimes.

4 Organisational Arrangement

4.1 Roles and Responsibilities

The Client : The Client Southwark Council will be responsible for the development of the Plan and issuing instructions to the contractor as regards when to salt, based on meteorological forecast data, with completion of decision justification sheet to support decisions made.

The Contractor : The Council's Highways Works contractor, FM Conway is responsible for the provision of Rock Salt and the appropriate equipment and necessary resources to apply salt at specified spread rates, respond to instructions to treat highways and to provide accurate records of all salting operations. The contractor will keep full record of all salting operations and services provided throughout the winter period with the aid of log sheets as outlined in Appendix D.

Street Cleansing: The Council's Street Cleansing division will be responsible for treating all priority footways and recording details of all activities undertaken.

Table 2 below outlines the split of the primary responsibilities between the client and contractor.

Table 2: Roles and responsibilities of client and contractor

Client	Contractor
Winter Service Policy and Plan Instruct Contractor Establish Priorities Day to Day decision Making Routing Performance Monitoring Contract Administration Footway salting & Cycleway QW1 liquid de-icer and Equipment	Dedicated salting vehicles with GPS (Global Positioning System). Day to Day operations Supply of operational records Salt supply and ensuring adequate supplies Records of salt usage GPS records of routes salted.

4.2 Pre-season Preparations

A pre-season meeting will be held between Southwark Council, FM Conway and other key stakeholders in advance of any winter service activities to ensure lessons from previous season and identified best practice have been incorporated to improve the services.

In all cases sufficient labour, plant materials and other resources will be set aside to ensure that treatment of the priority network can be completed within the pre-determined and agreed timescales. Operations will be carried out from the Latona Road Depot. A full list of nominated individuals who will be involved in delivering the winter services for the current season is included in Appendix J.

The winter service manager will ensure that the Council and its Contractor are in a state of readiness for the season. Some of the activities that will be undertaken in that direction include but not limited to the following;

- Contract arranged for provision of weather forecast.
- Confirmation received from contractors indicating operatives have been properly trained in the use of vehicles, plant and equipment.
- Priority Routes have been updated and re-issued as necessary.
- Precautionary salting routes are planned.
- Sources for the provision of additional plant for use in snow emergencies identified.

- Ensure contractor has salt stocks replenished and has adequate arrangements for restocking during the winter season.
- Salt bins are in place on site and filled.
- All vulnerable sites are identified.
- Duty rota prepared
- Council staff involved in winter service duties as identified below are duly trained

Winter Services Manager (WSM) – Is appointed by Southwark Council and will ensure sufficient operational resources are available to deliver the winter service as laid out in the Plan. Also responsible for overseeing and co-ordinating winter service operations in conjunction with the Client Standby Officer (CSO) and the Daytime Duty Officer (DDO).

Client Standby Officer (CSO) – Works on a rota system where the CSO is responsible for directing the various contractors and operators outside of normal working hours. If necessary the CSO will liaise with the WSM for decisions outside of normal conditions. The CSO will pass on a situation report to the DDO on finishing his duty.

Winter Service Operations Manager (WSOM) – Also referred to as the supervisor will be an appointed representative of FM Conway to coordinate the contractor's response to winter service activities. Will ensure sufficient trained and competent operatives are to be available to fulfil service requirements.

4.3 Response and treatment times

Precautionary winter treatments instructed by the WSM will usually take place in the off-peak period.

The **response time** is currently defined as “the time taken from receipt of the order to the time at which the vehicles are loaded, manned and ready to leave the depot”. This activity is expected to be completed in an hour.

The **treatment time** is defined as “the time taken from departure to the time at which the precautionary treatment route is completed. The time will include leaving the depot / loading point to begin the treatment of the whole route”. The target is as outlined in table 3 below.

Table 3: Maximum Precautionary Treatment Times

Asset *	Response time	Treatment time
LBS FSR1	1 hour	2 hours
LBS Urban Priority	1 hour	6 hours
Resilience Network (Crystal Palace)	1 hour	6 hours
Resilience Network (Thames)	1 hour	2 hours
Resilience Network (Urban)	1 hour	4 hours
Vulnerable Sites & Priority Footways	1 hour	24 hours
Cycle Routes	TBC	TBC

* see Appendix E and F for full list of assets treated

4.4 Performance Monitoring

A review will be undertaken at the end of the winter period to evaluate the performance of all involved in the delivery of the Plan. This will include regular monitoring of the Council and contractors' performance through the daily decision and activity reports.

The report will include performance monitoring of the following:

- Accuracy of weather forecast
- DDO Decisions
- Response Times
- Treatment Times
- Vehicle and Plant Availability
- Accuracy and timely submission of daily activities reports
- Quantities of salt used and residual stock at end of season

5 Weather Information and Decision Making

5.1 Performance Monitoring

The WSM is responsible for issuing daily decision justification log. These can be found in Appendices B and C. The process is initiated with the aid of a specialist weather forecasting data. Information on weather conditions need to be accurate, reliable and timely to facilitate an efficient and effective winter service operation.

For the 2021/22 winter season, forecast information will be provided by Metdesk Limited.

The weather forecast information will be made available via a website and the forecast information will be provided by email on at least three occasions during each day of the Winter Service Period.

- At/before 08.00 the forecast will comprise an update of the actual previous day temperatures together with the morning outlook
- At/before 13.00 (midday) a 24-hour forecast and a 2-5 day outlook will be provided and
- At/before 19.00 an evening update is issued

The weather forecast will be provided in three domains; Crystal Palace, The Thames and the Urban Domains.

5.2 Decision Making Procedure

It is expected that the first and/or second forecast will be used to make the initial action decisions. Each day during the winter service period, the WSM will assess the forecast information in liaison with the WSOM and agree the proposed action in response. Subsequent to the decision, the WSOM will post the decision on the relevant bureau service. If there is doubt as to the precise action, then the decision can be updated after the late afternoon forecast, or after consultation with the forecaster.

During unsettled/severe weather periods the WSM will take responsibility for making treatment decisions. On occasions where there are significant changes to the forecast, regular evening updates will be obtained by email and by telephone from Metdesk. The WSM/CSO will have the facility to directly contact Metdesk Duty Officers at any time during the winter period. If any unexpected weather changes occur after the receipt of the daily 24 hour forecast the Metdesk forecaster will contact the WSM and advise accordingly.

The daily winter service notice will provide the following information:

- The routes to be treated
- Treatment and spread rate
- Date and time of decision
- Date and time of forecast the decision was based upon
- Date and time of instruction to FM Conway
- Duty Officer details

The decision making matrix and flow chart below will assist with the process of decision making.

Table 4: Decision Matrix Guide

		Predicted Road Conditions		
Road Surface Temperature	Precipitation	Wet	Wet Patches	Dry
May fall below 1°C	No rain No hoar frost No fog	Salt before frost	Salt before frost (see note a)	No action likely, monitor weather. (see note a)
Expected to fall below 1°C	No rain No hoar frost No fog		Salt before frost (see note b)	
	Expected hoar frost			
	Expected rain BEFORE freezing	Salt after rain stops (see note c)		
	Expected rain DURING freezing	Salt before frost as required during rain and again after rain stops (see note d)		
	Possible rain Possible hoar frost Possible fog	Salt before frost	Monitor weather conditions	
Expected snow		Salt before snow falls		
The decision to undertake precautionary treatments should, if appropriate, be adjusted to take account of residual salt or surface moisture.				
All decisions should be subjected to continuous monitoring and review				

- (a) Particular attention should be given to the possibility of water running across carriageways and other running surfaces e.g. off adjacent fields after heavy rains, washing off salt previously deposited. Such locations should be closely monitored and may require treating in the evening and morning, and possible on other occasions.

When a weather warning contains reference to expected hoarfrost, considerable deposits of frost are likely to occur. Hoarfrost usually occurs in the early morning and is difficult to cater for because of the probability that any salt deposited on a dry road too soon before its onset, may be dispersed before it can become effective. Close monitoring is required under this forecast condition which should ideally be treated just as the hoarfrost is forming. Such action is usually not practicable and salt may have to be deposited on a dry road prior to and as close as possible to the expected time of the condition. Hoarfrost may be forecast at other times in which case the timing of salting operations should be adjusted accordingly.

If, under these conditions, rain has not ceased by early morning, crews should be called out and action initiated as rain ceases.

Under these circumstances rain will freeze on contact with running surfaces and full pre-treatment should be provided even on dry roads. This is a most serious condition and should be monitored closely and continuously throughout the danger period.

Weather warnings are often qualified by altitudes and this should be factored into any decisions.

Decision Making Guide

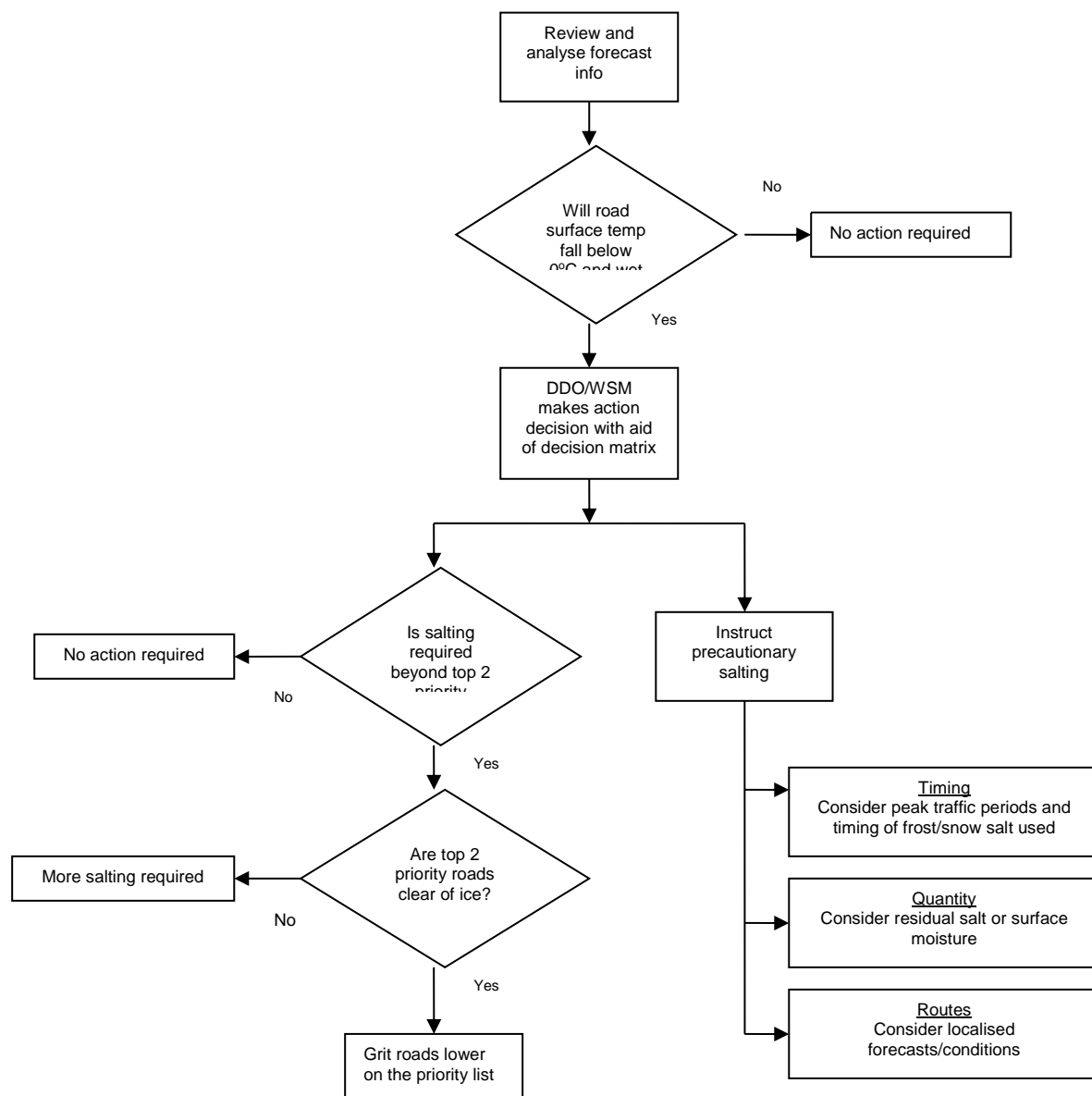


Figure 2: Decision making guide

Precautionary Salting Procedure

When weather reports indicate freezing conditions and roads and footways are likely to require treatment the CSO/DDO will make an assessment of the action required based on weather forecasts, experience and physical conditions. If it is decided that salting is required the WSOM/Supervisor will be contacted and alerted. The callout rota and contact telephone numbers are given in Appendix J. The chart will be a guide in making the decision.

The WSM/CSO will provide clear and concise instructions to the contractor's supervisor as early as possible so that the contractor is given the maximum possible time to organise his resources.

Precautionary Salting Process

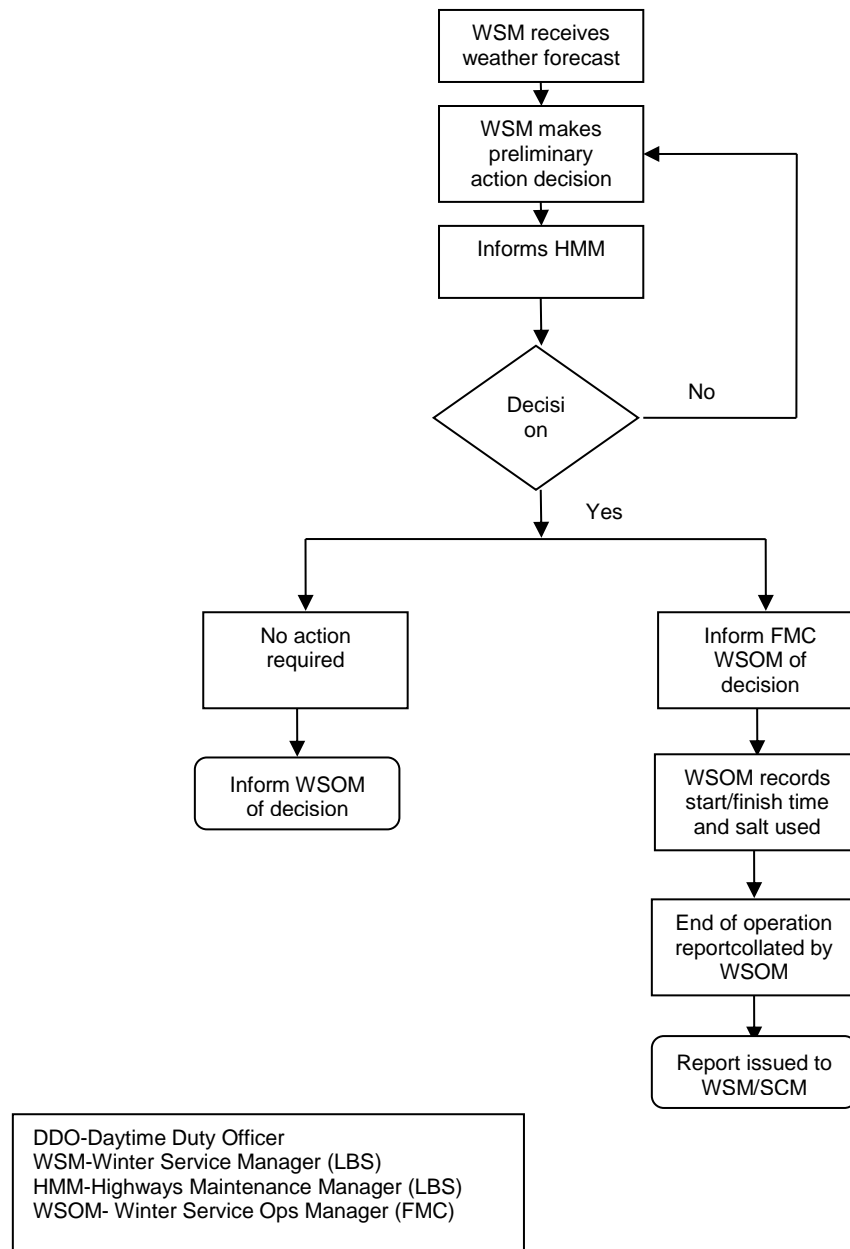


Figure 3: Precautionary salting process

Reported Ice on Precautionary Salting Route

Occasionally ice may be identified on a priority road. The flow chart below will be a guide in dealing with instances of reported ice on a route which has been identified as a priority for precautionary salting purposes.

Process for Dealing with Ice on Precautionary Salting Route

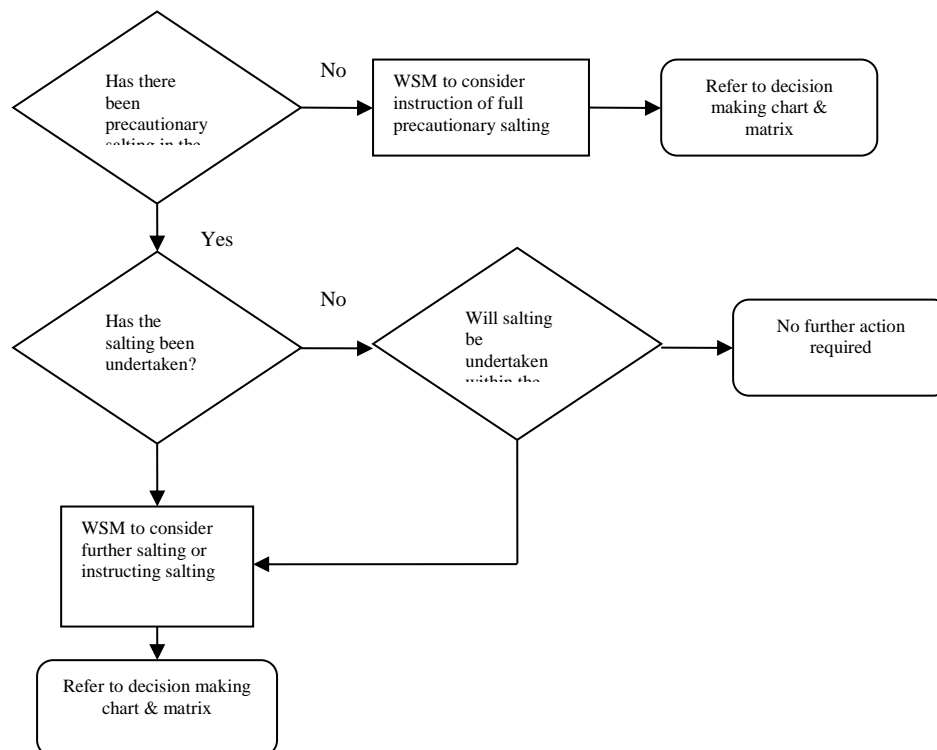


Figure 4: Guide to dealing with ice on priority route

Treatment Requirements

Precautionary Salting

When potential hazardous road conditions have been forecast, all priority salting routes will be treated in the pre-determined priority order as necessary within specified times to prevent or retard ice formation. Normal salting rate is up to 20 gms/m².

Treatment of Ice

If ice has formed on the road surface salt shall be spread at a rate up to 40 gms/m² depending on the amount of ice to be removed and the air temperature.

Treatment of Snow

Snow clearance will be carried out in order of priority where practicable. The maximum salt spreading rate recommended for melting up to 40 mm of fresh snow at 0°C is 40 gms/m². Repeated applications of salt can remove a heavy accumulation of snow in highly built environments where snow removal may be impracticable.

Treatment of Hard Packed Snow and Ice

Hard-packed snow is not expected to be a significant issue if the aforementioned recommendations are adhered to. However, should these conditions form at temperatures down to minus 5 °C and where the hard packed snow and ice are more than 20 mm thick, removal is possible by using successive salt spreads at 20-40 gms/m².

At temperatures below minus 5°C and 20 mm thickness of hard packed snow or ice, the use of salt alone will result in an uneven and slippery surface.

In those exceptional circumstances a single-sized abrasive aggregate of particle size 0.6-1 cm, or a 0.5 mm sand having a low fine content can be added to the salt. However, it is recommended that the team reverts to the use of salt only as soon as possible to avoid the blocking drains and gulleys on thawing especially since abrasives contribute little to the removal of the snow and ice.

Use of Salt/Sand

Where salt is to be used, it must be applied in its neat form. Sand should be sent out later if considered to be necessary. Care must be taken that salt is not spread needlessly, or wastefully, any lumps must be broken up.

In the event of mechanical salt spreading machines not being available for any reason, the spreading of salt or sand on the highway will be carried out by staff by means of hand shovels. Employees sent out to spread salt or sand must be reminded of the need to take care to ensure that salt is not thrown onto pedestrians or vehicles. Care must also be taken to ensure that salt is not thrown upon lawns and flower beds. Where practicable no salt is to be applied within 6 feet of a young tree.

Footway Treatment

Priority is given to areas where there is a high proportion of pedestrian traffic referred to as vulnerable sites (hot spots). These include schools, hospitals, ambulance, fire, police and transport stations. To ensure the best use of resources and that key areas are addressed as soon as possible the following procedure is recommended.

When snow is forecast, the WSM will in consultation with the street cleansing management advise the team to stop sweeping and start salting the vulnerable sites and priority footways

listed in Appendix F. This is to apply as early as possible (preferably from start of work if forecast received in time). Both day and night time street sweepers will be fully engaged under such circumstances.

If snow has settled and cannot be treated by salt alone, a pathway of 1.2 metres should be cleared of snow and salted to allow 2 (two) pedestrians to walk past each other without obstruction. A pathway should also be cleared to give access for pedestrians to use telephone kiosks, bus shelters, post boxes and pedestrian crossings within the vulnerable sites. Where possible salt will be spread on the cleared path to stop ice reforming. It is recognised that the speed and ability to respond to meet this need is limited by access of the operatives to the depot and salt supplies.

In addition to snow clearance of footways, when extreme hazardous conditions occur, due to freezing after rainfall or a light dusting of snow, leading to icy footways, post salting of foot ways will commence as soon as possible at major town centres, shopping areas and other vulnerable sites and will be extended to other areas of the borough where practicable.

All footways along the red route will be the responsibility of Transport for London (TfL).

Estates Treatment

Salting within the estates is focused on minimising risks to residents with the following treated during adverse weather conditions.

- Entrances to blocks
- Open landings and walkways
- Ramps
- Pathways
- External stairs
- Access points to external bin chambers

Maintenance after Severe Weather

Removal of Grit and Sand

Where it has been necessary to use grit and sand on the highway, the Council's street cleansing team will remove residual sand during normal cleansing activities. Where large amounts remain on footways, assistance will be provided as requested to ensure cleansing is completed within one week. It may also be necessary to clean gullies, particularly gullies and drainage channels located on footways.

Carriageways, Footways and Cycle Routes

After a winter in which there has been prolonged periods of severe weather a course visual inspection will be carried out of selected carriageways, footways and cycle routes to assess the likelihood of frost damage having occurred to surfaces and sub-structures. Localised disintegration will be dealt with as emergency patching in the interest of public safety. Utility companies will also be advised to inspect interim reinstatements.

Communication

Operational Communications

All instructions to the (Contractors) will be confirmed in writing. Instructions will only be issued to contractors staff through the nominated staff (WSOM). Instructions should not be issued direct to the contractors operatives except in exceptional circumstances.

During normal working hours oral instructions will be confirmed by email by 15.30 hrs. or as soon as possible. Instructions given outside normal working hours will be confirmed by email by 10.00 hrs. on the following working day. Instructions could be given either direct on site or by telephone (Landline or Mobile). The Contract Manager/Supervisor or an appointed representative will update the roadcast website on a daily basis with actions taken and inform all stakeholders on the agreed circulation list.

Co-ordination with Adjacent Authorities

All adjacent Highway Authorities in addition to identified organisations such as emergency services and bus companies will receive a copy of the Plan, prior to the start of the season. A full circulation list is detailed in Appendix A of this document. To ensure safe passage of people, goods and services across borough boundaries, the Plan will aim to facilitate similar treatment standards across boundary roads either through formal or informal arrangement.

During the winter months details of the proposed treatment decisions for Southwark will be e-mailed to all neighbouring highway authorities. Metdesk's website has a message board facility to document and email to the distribution list all actions for each day. All actions will be automatically emailed to all parties on the distribution list and stored / archived for future reference. If adverse weather restricts the use of e-mail, fax or landline telephone, then ad-hoc arrangements will be made to communicate with relevant local authority contacts by mobile telephone where possible.

In the event that a particular area within the borough becomes severely restricted or impassable due to weather conditions, the WSM will inform the relevant Metropolitan Police Area Traffic Management (ATM) Officer by telephone.

The Contractor will provide a post action report by e-mail to the WSM by 10:00hrs the day following any treatment actions.

Enquiries and Complaints

In the event of calls from the general public and other organisations/authorities complaining about snow and ice, the call centre will take steps to advise the caller of the winter service policy and plan which ensures prioritised carriageways and footways are treated first. The call centre will also be provided with a set of frequently asked questions (FAQ's) to deal with the majority of public queries. The FAQ's will be added to the Borough website. Where the call is in connection with an emergency (e.g. burst water main), the WSM will be informed immediately. The WSM in consultation with the HMM will make a decision on the course of action to be taken and inform the contractor accordingly.

Plants, Vehicles, Equipment and Resources

Salt

FM Conway are responsible for the purchasing of all salt supplies and the WSM is to ensure that the contractor has arrangements in place for the supply of extra salt if required during the winter period. Salt stocks are held at the Latona Road site. The pre-season stock is 1,200 tonnes. In event of nationwide control of salt distribution, salt orders may not always be delivered. The WSOM/contract supervisor is to draw to the client's attention when the stock pile is reaching critical levels. The contractor will order salt when stocks are reduced to levels below our minimum resilience requirement. Southwark is part of a mutual aid arrangement aimed at addressing localised salt shortages with other neighbouring authorities.

Minimum Stock Levels and Resilience Network

As a result of the problems with National salt supply during the winter of 2009-2010 Southwark Council has reviewed its minimum stock levels. The requirement for the resilience network is to have sufficient salt supply for treating the resilience network four times in a day consecutively for 6 days without replenishment. For Southwark each treatment will require 15 tonnes of salt. Hence the minimum salt requirement is 360 tonnes. The starting salt stock factoring in supplies to schools, designated footway areas, parks, cemeteries/crematoriums and filling salt bins will be about 1,200 tonnes. Our salt stock is therefore about three times the minimum required for the resilience network. In 2019, the minimum starting stock within London was defined as the salt stock required to carry out 48 full runs of the Primary network at 20g/m². For Southwark, this equates to 672 tonnes. Therefore there is adequate supply to meet the requirements of the resilience network for 18 days.

Salt Bins

Salt bins will be provided at locations where severe weather conditions may prevent access to essential services or particularly difficult sections of carriageway such as steep hills not on the priority list. As a self help facility, they will also enable local residents or passing motorists to treat the carriageway and footway within the locality. Apart from exceptionally difficult sites, salt bins will not be placed along routes covered by precautionary salting. Existing salt bin locations and requests for new sites will be reviewed each year. At the end of the winter season salt bin sites will be inspected and any salt spillage removed. All damaged bins will be removed from site and replaced with new ones prior to the winter season. Salt bins will be filled at the beginning of each winter period. Whereas the Council will make effort to refill the bins, these may not be possible as resources will be committed to treating priority areas. Moreover adverse weather may render them inaccessible.

Labour, Vehicles and Plants

The Term Contractor for winter salting is responsible for providing all plant and labour required for salting including specialist equipment for salt spreading in the form of mechanical salt spreaders in accordance with the terms of his contract.

Resources that will be made available for carriageway and cycle route salting include:

- 2 No. Euro 6 salt spreader vehicles with Exactrac GPS
- 4 No. salt spreader drivers (2 No. back up drivers) – Trained to City & Guilds
- 2 No. Supervisors (One on standby at any one time + spare) – Trained to City & Guilds
- 1 No. Front Loading shovel + driver
- 2 No. grab lorries available when required

During severe weather, lot A & B work teams available to assist with snow clearance or other winter duties

Resources that will be made available for cycle route C10 treatment by Southwark Council's Cleaning team include:

4x Operators with hand spray backpacks
De-icing liquid (Currently Safecote Supamix CLEAR)

All salting vehicles will be fitted with GPS (Global Positioning System) a report of the progress showing the route taken, distance travelled and time taken may be retrieved the following morning after the previous nights salting operations are complete, or at any time whilst operations are in progress and reported accordingly.

For footway salting the resources available to the Street Cleansing Team include;

60 Drivers
127 Operators
32 Vehicles
4 No. Supervisors
Mechanical footway salt spreaders

Basic equipment such as snow shovels and salt spreaders for snow clearance and footway salting owned by the street cleansing contractors will also be deployed on this operation.

Health, Safety and Environment

Health and Safety

The contractor shall undertake risk assessment of all of its winter service operations to ensure all activities will be undertaken safely and the health of operatives is not compromised. All operatives should be briefed on this risk assessment, as a guide the following areas have been considered;

Vehicle breakdown
Manual handling
Contact with salt
Supervision
Exposure to cold
Exhaustion
Accident procedure
Lone working
Lost of communication
Incident reporting
Use of PPE
Slips and trips

The risk assessment should be provided by the contractor prior to the start of the winter period.

Environment

The following which is not an exhaustive list are recommended in the process of delivering the winter services;

Calibration of spreaders to ensure correct rate of spread and spinner action.
Vehicles should be in good condition to reduce the emission of CO₂.
Stockpiling of salt to comply with the Environment Agency and local planning requirements.
Avoid seepage of salt into drains
Vehicle wash-down areas to be contained and all necessary interceptors in place.
No salt shall be stockpiled against trees
Avoid applying salt to within 2 metres feet of a young tree where practicable.

Appendices

Appendix A: Distribution List for 2021/2022

Internal
Strategic Director of Environment and Leisure Director of Environment Head of Highways Highway Maintenance Manager Winter Service Manager (WSM) Client Standby Officers (CSO) Highway Inspectors Finance and Administration Manager Emergency Planning Manager Southwark Cleaning Communications Team (Council web site)
External
Contractors FM Conway Ltd.
External Authorities London Borough of Bromley London Borough of Greenwich London Borough of Lewisham London Borough of Croydon London Borough of Lambeth Transport for London

Appendix B: Winter Service – Daily Log Sheet

Date	Month	Time Contract or informed of decision	Hazard (ie Frost, Ice, Snow etc From Metdesk Forecast) N/A for No Hazard identified	Received YES/No Action taken (Enter YES/No action taken on file if no action is taken and complete the decision justification box)	Agreed Spread Rate (t/acre)	Agreed Start Time	Agreed Gritting Route	Joint decision with LBS staff (Name)	Decision Report Passed on to Highways	Time Passed on to Highways	Passed by (GB Duty Officer)	Customer treatment by cleaning team (YES/NO)	Comments/Feedback/Complaints etc	Further Action	Link to Forecast
01/10/2021	October														
02/10/2021	October														
03/10/2021	October														
04/10/2021	October														
05/10/2021	October														
06/10/2021	October														
07/10/2021	October														

Appendix C: Winter Service – Daily Decision Justification Log

London Borough of Southwark

Date:		Time Decision Taken:		
Time of recorded forecast:				
Forecast:				
Summary of forecast – including timings of expected temperatures below freezing:				
Proposed action:				
Priority Routes	No action	Full presalt	Time	Spread Rate
Frost Susceptible Roads (FSR)				
Resilience Network (not on the FSR)				
Resilience Network-Crystal Palace				
Urban Priority Roads (UPR)				
Resilience Network-Urban (not on UPR)				
Frost Susceptible Road				
Footways (Provide details on a separate sheet)				
Justification:				
(Please add additional paper if necessary)				
Signed:				
Controller				

Appendix D: Winter Service Situation Report

Route	Vehicle Reg.	Drivers Name	Instruction Given by	Time of Inst.	Start Time	Finish Time	Spread Rate (g/m ²)	Tonnage

Supervisors remarks (including weather conditions)

R= Rain; F= Fog; H = Hoar Frost, I = Ice (or temperature below zero Celsius)
S = Snow (then estimate inches) e.g. S4 for 4 inches of snow

Signed:

(Supervisor)

Appendix E: Carriageway Priority Routes

Priority Ranking (based on previous seasons)	Region	Reference	Weather Forecasting Domain	Code Name
1	South of Borough	Frost Susceptible Road	Crystal Palace	FSR1 (Red)
2	South of Borough	Resilience Network (not on the FSR1)	Crystal Palace	RN-South (Amber)
3	North of Borough	Resilience Network-North	Thames	RN-North (Green)
4	Centre of Borough	Resilience Network –Central (Not on priority route)	Urban	RN-Urban (Purple)

ROUTE 1 - Start from Brockley Way

↑	BRENCHLEYGARDENS	↑	DULWICH WOOD PARK
R	FOREST HILL ROAD	↑	PAXTON ROUNDABOUT
R	COLYTON ROAD	R	ALLEYN PARK
↑	HOMESTALL ROAD	U	PARK HALL ROAD
U	AT PECKHAM RYE	L	PAXTON ROUNDABOUT
↑	COLYTON ROAD	L	ALLEYN ROAD
↑	DUNSTANS ROAD	R	ALLEYN ROAD
↑	UPLAND ROAD	R	PARK HALL ROAD
L	LORDSHIP LANE	↑	ALLEYN PARK
L	OVERHILL ROAD	L	THURLOW PARK ROAD
L	UNDERHILL ROAD	R	GALLERY ROAD
R	RYEDALE ROAD	↑	DULWICH VILLAGE
L	FOREST HILL ROAD	R	EAST DULWICH GROVE
↑	PECKHAM RYE	R	TOWNLEY ROAD
L	BARRY ROAD	R	CALTON AVENUE
L	UNDERHILL ROAD	U	CALTON AVENUE
L	LORDSHIP LANE	L	TOWNLEY ROAD
R	SYDNEHAM HILL	L	EAST DULWICH GROVE
R	SYDNEHAM HILL	R	RED POST HILL
R	CRESCENT WOOD ROAD	L	HERNE HILL
R	SYDNEHAM HILL	L	CASINO AVENUE
R	CRYSTAL PALACE PARADE	↑	CASINO AVENUE
R	COLLEGE ROAD	R	SUNRAY AVENUE
↑	DULWICHWOODPARK	L	NAIRNE GROVE
L	FARQUHAR ROAD	L	NAIRNE GROVE
L	JASPER ROAD (2 ND JUNC)	L	WOODFARRS (2 ND JUNCTION)
L	FARQUHAR ROAD	L	CROSSTHWAITE AVENUE
L	DULWICH WOOD AVENUE	↑	SUNRAY AVENUE
R	DULWICH WOOD PARK	R	SUNRAY AVENUE
L	KINGSWOOD DRIVE	R	DENMARK HILL
L	BOWEN DRIVE	R	CHAMPION HILL
R	SEELEY DRIVE	L	CHAMPION HILL
L	LYALL AVENUE	L	GROVE LANE
R	BOWEN DRIVE	L	CHAMPION PARK
U	AT ATWELL HOUSE	U	AT DENMARK HILL
↑	BOWEN DRIVE	R	GROVE LANE
R	BOWEN DRIVE	↑	DOG KENNEL HILL
L	KINGSWOOD DRIVE	↑	GROVE VALE
R	COLLEGE ROAD	L	EAST DULWICH ROAD
↑	FOUNTAIN DRIVE	↑	NUNEHEAD ROAD
R	CRYSTAL PALACE PARADE	↑	EVELINA ROAD (finish at Gibbon Rd)
R	COLLEGE ROAD		

ROUTE 2: CRYSTAL PALACE RESILIENCE NETWORK

↑ POMEROY STREET	U LORDSHIP LANE (JUNC FRIERN ROAD)
↑ LAUSANNE ROAD	R BARRY ROAD
R EVELINA ROAD	U BARRY ROAD (JUNC PECKHAM RYE)
L GIBBON ROAD	R UNDERHILL ROAD
L OAKDALE ROAD	↑ WHATELEY ROAD
↑ IVYDALE ROAD	L LORDSHIP LANE
↑ ATHENLAY ROAD	U JUNCTION BARRY ROAD
L BROCKLEY WAY	U GROVE VALE ROUNDABOUT
U BROCKLEY WAY	R EAST DULWICH GROVE
↑ MERTTINS ROAD	R RED POST HILL
L IVYDALE ROAD	L HALF MOON LANE
R CHELTENHAM ROAD	U HALF MOON LANE
↑ PECKHAM RYE	R VILLAGE WAY
L EAST DULWICH ROAD	R DULWICH VILLAGE
L PECKHAM RYE	L COLLEGE ROAD
↑ FOREST HILL ROAD	R DULWICH COMMON (Gritter OFF)
↑ HONOR OAK PARK	L CROXTED ROAD (Gritter ON)
U HONOR OAK PARK	↑ SOUTH CROXTED ROAD
↑ FOREST HILL ROAD	↑ ALLEYN ROAD
L WOODVALE	R GIPSY HILL
R MELFORD ROAD	U GIPSY HILL
L LORDSHIP LANE	R DULWICH WOOD PARK
L UNDERHILL ROAD	↑ COLLEGE ROAD
L MELFORD ROAD	L CRYSTAL PALACE PARADE
R LORDSHIP LANE	L SYDENHAM HILL
R FRIERN ROAD	L LONDON ROAD (Gritter OFF)
L ETHROW STREET	L LORDSHIP LANE (Gritter ON)
L BARRY ROAD	↑ LORDSHIP LANE UNTIL UNDERHILL RD
L LORDSHIP LANE	

ROUTE 3: THAMES RESILIENCE ROUTE

↑ ROTHERHITHE NEW ROAD (start at Old Kent Rd)	U SURREY QUAYS ROAD at Lower Road
L ROTHERHITHER OLD ROAD	R REDRIFF ROAD
R LOWER ROAD	L LOWER ROAD
R ROTHERHITHE NEW ROAD	L PLOUGH WAY
↑ ROTHERHITHE NEW ROAD	U PLOUGH WAY at Calypso Way
R HAWKSTONE ROAD	L LOWER ROAD
L LOWER ROAD	R BESTWOOD STREET
R BRUNEL ROAD	R BUSH ROAD
↑ SALTER ROAD	L ROTHERHITHE NEW ROAD
L ROTHERHITHE STREET (2nd junction)	R GALLEYWALL ROAD
L SALTER ROAD	L SOUTHWARK PARK ROAD
↑ REDRIFF ROAD	L ST JAMES ROAD
R SURREY QUAYS ROAD	R ROLLS ROAD (Finish at Humphrey Road)

4: URBAN RESILIENCE ROUTE

<ul style="list-style-type: none"> ↑ ILBERTON ROAD (Towards Old Kent Road) U ILBERTON ROAD R ROTHERHITHE NEW ROAD U ROTHERHITHE NEW ROAD (At Roundabout) R RAYMOUTH ROAD R SOUTHWARK PARK ROAD U SOUTHWARK PARK ROAD L ST JAMES ROAD L CATLIN STREET R ROTHERHITHE NEW ROAD ↑ ST JAMES ROAD R OLD KENT ROAD (Gritter OFF) R DUNTON ROAD (Gritter ON) L MANDELA WAY L OLD KENT ROAD (Gritter OFF) L HUMPHREY ROAD (Gritter ON) L MANDELA WAY R DUNTON ROAD R SOUTHWARK PARK ROAD U SOUTHWARK PARK ROAD (At St James Road) ↑ GRANGE ROAD R TOWER BRIDGE ROAD (Gritter OFF) R ABBEY STREET (Gritter ON) R JAMAICA ROAD (Gritter OFF) L GEORGES ROW (Gritter ON) L WOLSELEY STREET L PARKER ROW U PARKER ROW L DOCKHEAD L JAMAICA ROAD (Gritter OFF) R ABBEY STREET (Gritter ON) ↑ LONG LANE R GREAT DOVER STREET ↑ MARSHALSEA ROAD R SOUTHWARK BRIDGE ROAD U SOUTHWARK BRIDGE ROAD (At Bridge) ↑ SOUTHWARK BRIDGE ROAD L BOROUGH ROAD R NEWINGTON CAUSEWAY R GAUNT STREET R SOUTHWARK BRIDGE ROAD L BOROUGH ROAD L LONDON ROAD (Gritter OFF) R GARDEN ROW (Gritter ON) R ST GEORGES WAY (Gritter OFF) R LAMBETH ROAD (Gritter ON) U LAMBETH ROAD ↑ LAMBETH ROAD 	<ul style="list-style-type: none"> U LAMBETH ROAD (At Kennington Road) L ST GEORGES WAY (Gritter OFF) R WESTMINSTER BRIDGE ROAD L WATERLOO ROAD (Gritter ON) ↑ WATERLOO RD / THE CUT (Gritter OFF) R STAMFORD STREET ↑ SOUTHWARK STREET L BOROUGH HIGH STREET R RAILWAY APPROACH (Gritter ON) ↑ LONDON BRIDGE ROAD L BOROUGH HIGH STREET (Gritter OFF) ↑ NEWINGTON CAUSEWAY (Gritter ON) R ELEPHANT & CASTLE (Gritter OFF) ↑ NEWINGTON BUTTS L WALWORTH ROAD (GRITTER ON) ↑ CAMBERWELL ROAD L CAMBERWELL GREEN U D'EYNSFORD ROAD L CAMBERWELL ROAD L CAMBERWELL CHURCH RD (OFF) L SOUTHAMPTON WAY (GRITTER ON) R COTTAGE GREEN L WELLS WAY L ALBANY ROAD U ALBANY ROAD ↑ HUMPHREY STREET U HUMPHREY STREET ↑ ALBANY ROAD R THURLOW PARK ROAD R EAST STREET U EAST STREET R FLINT STREET ↑ RODNEY ROAD ↑ HEYGATE STREET L WALWORTH ROAD R MANOR PLACE R BRAGANZA STREET U KENNINGTON PARK ROAD R DE LAUNE STREET U DE LAUNE STREET R BRAGANZA STREET L MANOR PLACE R PENTON PLACE L PENROSE STREET U PENROSE STREET R CARTER STREET L CHAPTER ROAD
--	--

URBAN RESILIENCE ROUTE - CONTINUED

R	LORRIMORE ROAD
L	COOKS ROAD
↑	DALE ROAD
R	JOHN RUSKIN STREET
L	CAMBERWELL NEW RD (Gritter OFF)
L	WYNDHAM ROAD (Gritter ON)
U	WYNDHAM ROAD
L	REDCAR STREET
R	COMBER GROVE
L	CAMBERWELL NEW RD (Gritter OFF)
R	WARNER ROAD (Gritter ON)
L	DENMARK ROAD (Gritter OFF)
L	COLDHARBOUR LANE (Gritter ON)
R	DENMARK HILL
L	CHAMPION PARK
L	GROVE LANE
L	CAMBERWELL CHURCH RD (Gritter OFF)
L	DENMARK HILL (Gritter ON)
↑	HERNE HILL
U	HERNE HILL
R	RED POST HILL
L	EAST DULWICH GROVE (GRITTER OFF)
L	MELBOURNE GROVE (GRITTER ON)
R	GROVE VALE
U	AT ROUNDABOUT
↑	GROVE VALE
R	GROVE HILL ROAD
R	BROMAR ROAD
L	IVANHOE ROAD
R	AVONDALE RISE
L	BELLENDEN ROAD
R	CHOUMERT ROAD
L	CHOUMERT GROVE
L	CHADWICK ROAD

↑	CHADWICK ROAD
R	LYNDHURST WAY
R	HOLLY GROVE
R	BELLENDEN ROAD
L	BLENHEIM GROVE
R	RYE LANE
L	PECKHAM RYE
R	EAST DULWICH ROAD
R	PECKHAM RYE
↑	RYE LANE
↑	COPELAND ROAD
L	CONSORT ROAD
L	CLAYTON ROAD
U	CLAYTON ROAD
R	HANOVER PARK
L	RYE LANE
U	RYE LANE (JUNC BLENHEIM GROVE)
L	PECKHAM HIGH STREET (Gritter OFF)
R	MELON ROAD
U	MELON ROAD
L	PECKHAM HIGH STREET
L	PECKHAM HILL STREET (Gritter ON)
↑	WILLOWBROOK ROAD
↑	SUMNER ROAD
↑	TRAFALGAR AVENUE
R	OLD KENT ROAD (Gritter OFF)
R	PECKHAM PARK ROAD (Gritter ON)
↑	BULLER CLOSE
L	PECKHAM HILL STREET
L	PECKHAM HIGH STREET (Gritter OFF)
↑	QUEENS ROAD
L	ASYLUM ROAD (Gritter ON)
↑	ASYLUM ROAD finish at Old Kent Road

Appendix F: Vulnerable Sites and Priority Footways

Central Area Gritting Hot Spots		
Address	Site	Reason
Adys Road	St Johns and St Clements C of E Primary School	School
Asylum Road	Retail area @ junction with Queens Road	Retail
Asylum Road	Retail area along from junction with Meeting House Lane	Retail
Bird in Bush Road	Camelot Primary School	School
Bromar Road	Grove Hill Road - Ivanhoe Road	Gradient
Burcher Gale Grove	Gloucester Primary School	School
Camberwell Church Street	Retail Area	Retail
Camberwell Green	Retail area Camberwell New Road - Camberwell Road	Priority
Camberwell New Road	Sacred Heart Roman Catholic Secondary School	School
Camberwell New Road	Bus Garage @Junction with Warner Road	Transport
Camberwell Road	Camberwell Green - John Ruskin Street / Bowyer Place	Priority
Champion Hill	Denmark Hill - crossroads	Priority
Champion Park	Station - Denmark Hill (British Rail)	Transport
Chandler Way	Ann Bernardt Nursery & Childrens Centre (No. 29)	School
Coldharbour Lane	Retail area Denmark Hill - Crawford Road	Retail
Coleman Road	St Georges C of E Primary School (43)	School
Comber Grove	Comber Grove Primary School	School
Commercial Way	Retail area across junction with Sumner Road	Retail
Commercial Way	Retail area along from Naylor Road	Retail
Crawford Road	Crawford Primary School	School
Crossthaite Avenue	Retail area along from junction with Woodfarms	Retail
Daniels Gardens	Tuke School	School
De Crespigny Park	Maudsley Hospital side along to Denmark Hill	Hospital, etc.
Denmark Hill	Maudsley Hospital along to Champion Park	Hospital, etc.
Denmark Hill	Camberwell Green - Daneville Road	Priority
D'Eynsford Road	Doctors, o/s library & o/s Court	Hospital, etc.
Don Phelan Close	D'Eynsford SHU	SHU
Dog Kennel Hill	Whole street	Priority
Friary Road	St Francis RC Primary School	School
Grosvenor Park	Sheltered Housing Unit	SHU
Grove Hill Road (odd numbers)	Camberwell Grove - Ivanhoe Road	Gradient
Grove Lane	Lyndhurst Primary School	School
Grove Lane	Retail area along from Camberwell Church Street	Retail
Grove Lane	Champion Park - Dog Kennel Hill	Priority
Grove Vale	Retail area Coplestone Road to railway bridge	Retail
Haymerle Road	Haymerle School	School
John Ruskin Street	John Ruskin Primary School	School
Kelly Avenue	Lister Health Centre @ junction with Peckham Road	Hospital, etc.
Kimpton Road	Youth Court	Priority
Malfort Road (odd numbers)	Grove Hill Road - Ivanhoe Road	Gradient
Marmont Road	Peckham Park Primary School	School
Meeting House Lane	Nell Gwynn Childrens Centre	School
Meeting House Lane	Retail area along from Carlton Grove (Acorn Parade)	Retail
Meeting House Lane	Retail area along from Geldart Road	Retail
Nairne Grove	Bessemer Grange Primary School + Early Years	School
Peckham Hill Street	Retail area from Peckham High Street to Goldsmith Road	Retail

Peckham Park Road	St Francis RC Primary School	School
Peckham Park Road	Retail area Old Kent Road to Green Hundred Road	Retail
Peckham Park Road	Retail area at junction with Friary Road	Retail
Peckham Road	Oliver Goldsmith Primary School	School
Peckham Road	Lister Health Centre @ junction with Kelly Road	School
Picton Street	Brunswick Park Primary School	School
Pitman Street	St Joseph's RC Infants School - Pitman St	School
Southampton Way	Oliver Goldsmith Primary School	School
Southampton Way	Retail area from Wells Way - Peckham Grove	Retail
Southampton Way	Retail area along from Havil Street	Retail
Southampton Way	Southwark College	School
St. Giles Road	St. Giles Health Centre along from junction with Peckham Road	Hospital, etc.
Sumner Avenue footpath	St. James the Great School	School
Vestry Road	Retail area along from junction with Graces Road	Retail
Warham Street	St. John School	School
Warner Road	Bus garage along from junction with Camberwell New Road	Transport
Willowbrook Road (park side)	Road bridge between Jct with Colegrave Road and Sumner Road	Gradient
Windsor Walk	Station - Denmark Hill (British Rail)	Transport
Wyndham Road	St Michael Academy to Camberwell New Road including retail	School

North West Area Gritting Hot Spots		
Address	Site	Reason
Arnside Street	Retail area along from Walworth Road	Retail
Bagshot Street	Retail area along from junction with Mina Road	Retail
Bankside	Bank End - Millennium Bridge	High Footfall
Bartholomew Street	Retail area along one side New Kent Road - Great Dover Street	Retail
Bartholomew Street	St Saviour's School New Kent Road - Great Dover Street	School
Bedale Street - BOTH SIDES	Retail area all through	Retail
Borough High Street - BOTH SIDES	Great Dover Street - Newington Causeway	High Footfall
Borough Road - BOTH SIDES	Whole street	Retail/School
Braganza Street	Station - Kennington Underground	Transport
Brook Drive	Brook Drive Sheltered Housing Unit	SHU
Bricklayers Arms subways	All ramps and stairs	Gradient
Camberwell Road	Westmoreland Road - Bowyer Place	Retail
Carter Street	East Street traders' barrow store	Retail
Cathedral Street - BOTH SIDES	Retail areas all through	Retail
Clink Street - BOTH SIDES	Retail areas all through	Retail
Cobourg Road	Cobourg Primary School	School
Colnbrook Street	St Jude's C of E Primary School	School
Darwin Street	Darwin Court Sheltered Housing Unit	SHU
Dawes Street	East Street traders' barrow store (Northchurch)	Retail
Deverell Street	Globe Academy	School
East Street - BOTH SIDES	Retail area along from Walworth Road to Flint Street	Retail
East Street	Retail area along from Flint Street to Elsted Street	Retail
East Street - BOTH SIDES	Retail area along from Old Kent Road to Congreve Street	Retail
Elba Place	Victory School	School
Elephant & Castle subways	All ramps and stairs	Gradient
Elephant Road	British Rail station New Kent Road - Walworth Road	Transport
Faunce Street	Keyworth Primary School	School
Flint Street	English Martyrs Catholic Primary School	School
Great Suffolk Street	Retail area along from junction with Southwark Bridge Road	Retail
Green Dragon Court - BOTH SIDES	Retail area all through	Retail
Harper Road	Retail area along from junction with Rockingham Street	Retail
Harper Road	Globe Academy to New Kent Road	School
Keyworth Street - BOTH SIDES	Southbank University - whole street	School
King and Queen Street	Robert Browning Primary School	School
Lant Street	Charles Dickens Primary School	School
Larcom Street	St Johns Walworth C of E Primary School	School
Little Dorrit Court/ Redcross Way	St Josephs RC Primary School	School
Liverpool Grove	St Peter's Walworth C of E Primary School	School
Malt Street	Along side of supermarket	Retail

Manor Place	Police Station to Walworth Road	Emergency
Manor Place	Retail area along from junction with Stopford Road	Retail
Marsland Close	Ray Gunter Sheltered Housing Unit	SHU
New Church Road	Retail area along from Camberwell Road	Retail
Newcomen Street - BOTH SIDES	Borough High Street - Great Maze Pond - Guys hospital access	Hospital
Newington Causeway - BOTH SIDES	Whole street	High Footfall
Park Street - BOTH SIDES	Retail area Stoney Street - railway bridge	Retail
Peacock Street	Crampton Primary School	School
Penrose Street	St Paul's Cof E Primary School	School
Portland Street	Michael Faraday Primary School	School
Queens Silver Jubilee Walkway	Millennium Bridge - Oxo Tower	High Footfall
Redcross Way	St Saviour and St Mary Overie School to Marshalsea Road	School
Rodney Road	Retail area along from junction with Orb Street	Retail
Rodney Road	Locksfield Sheltered Housing Unit	SHU
Royal Road	King Charles Court Sheltered Housing Unit	SHU
Shorncliffe Road	Walworth Academy	School
Southwark Bridge Road - BOTH SIDES	Retail areas from Southwark Bridge to Union Street	Retail
Southwark Bridge Road	Fire Station	Emergency
Southwark Bridge Road	Police Station (Nos. 207-209)	Emergency
Stoney Street - BOTH SIDES	Retail area all through	Retail
Surrey Square	Surrey Square Infant School	School
Surrey Square	Surrey Square Junior School	School
The Cut	Southwark College Blackfriars Road - Short Street	School
The Cut	Southwark Station Blackfriars Road - Hatfields	Transport
Toulmin Street	Charles Dickens School	School
Townsend Street	Townsend Primary School	School
Trafalgar Street	Walworth Academy Trafalgar Street - Portland Street j/w East St.	School
Upper Ground	Blackfriars Road - Broadwall	Retail
Victory Place	Victory School	School
Walworth Road - BOTH SIDES	Whole street	Retail
Waterloo Road	Retail area along from junction with Gray Street	Retail
Webber Street	Friars Primary School	School
Webber Street	Retail area along from Blackfriars Road	Retail
West Square	Charlotte Sharman Foundation Primary School-	School
Westmoreland Road - BOTH SIDES	Retail area Walworth Road to Queens Row	Retail

South Area Gritting Hot Spots		
Address	Site	Reason
Alleyn Park	Kingsdale Secondary School to junction with Hunts Slip Road	School
Alleyn Park	Dulwich College Prep School (No. 42)	School
Barry Road	Retail area along from Peckham Rye	Retail
Barry Road	St Anthony's Catholic Primary School	School
Bellenden Road - Both Sides	Retail area from Danby Street to Choumert Road	Retail
Blackpool Road	Bus garage to Copeland Road	Transport
Bowen Drive	Langbourne Primary School	School
Bowen Drive	Bottom section school area	School
Bowen Drive - Both Sides	Whole Road	Gradient
Brayards Road	Retail Area from Hollydale Road	Retail
Brayards Road	St Mary Magdalene Cof E Primary School	School
Brenchley Gardens	Entrance to New Cemetery	Cemetery
Brockley Way	Entrance to Crematorium	Crematorium
Casino Avenue - Both Sides	Whole Street	Gradient
Choumert Road - Both Sides	Retail area along from Rye Lane to Alpha Street	Retail
College Road - Both Sides	Kingswood Drive - Crystal Palace Parade	Gradient
Danecroft Road - Both Sides	Whole Street	Gradient
Dulwich Village	Dulwich Hamlet Junior School	School
Dulwich Village	James Allen's Prep School (No. 2)	School
Dulwich Village and Turney Road	Dulwich Village Church of England Infants School (No. 11)	School
Dunstons Road - Both Sides	Upland Road - Underhill Road	Gradient
East Dulwich Grove	James Allen's Girls' School	School
East Dulwich Grove	Dulwich Hospital	Hospital
East Dulwich Road	Retail from Goose Green to Gowlett Road	Retail
Elfindale Road - Both Sides	Whole Street	Gradient
Evelina Road - Both Sides	Retail area from Howbury Road to Nunhead Green	Retail
Farquhar Road	Bowley Lane - Jasper Rd only	Gradient
Farquhar Road - Both Sides	Whole Street except section in Lambeth	Gradient
Forest Hill Road - Both Sides	Whole Street	Gradient
Fountain Drive - Both Sides	Whole Street	Gradient
Frankfurt Road - Both Sides	Whole Street	Gradient
Gallery Road	Dulwich College Preparatory School (No. 8)	School
Gibbon Road	Kimberley Avenue to Evelina Road retail and station	Retail/Transport
Gipsy Hill - East Side	Dulwich Wood Avenue - Woodland Road Retail	Retail
Goodrich Road	Goodrich Primary School	School
Grove Vale	Retail area	Retail
Grove Vale	Station - East Dulwich (British Rail)	Transport
Half Moon Lane - Both Sides	Retail areas along from Herne Hill to Stradella Road	Retail
Hanover Park	Supermarket car park entrance	Retail
Heber Road	Heber Primary School	Retail

Herne Hill	Retail areas only	New
Hitherwood Drive - Both Sides	Whole Road	Gradient
Hollingbourne Road - Both Sides	Whole Street	Gradient
Hollydale Road	Hollydale Primary School	School
Hollydale Road	St Thomas the Apostle College to Lugard Road j/w Queens Road	School
Holmedene Avenue - Both Sides	Whole Road	Gradient
Homestall Road	Harris Girls' Academy East Dulwich to Peckham Rye East	School
Honor Oak Park	St Francesca Cabrini RC Primary School	School
Honor Oak Park - East Side	Forest Hill Road - Honor Oak Park Station	Gradient/Transport
Honor Oak Rise	Both Sides	Gradient
Inverton Road	Retail + Primary School	Retail/School
Ivydale Road	Ivydale Primary School	School
Jasper Road - Both Sides	Whole Street except section in Lambeth	Gradient
Kingswood Drive - Both Sides	Whole Street	Gradient
Limesford Road	Entrance to Nunhead Cemetery	Cemetery
Linden Grove	Entrance to Nunhead Cemetery	Cemetery
Lordship Lane - Both Sides	Whole Road	Retail/Gradient
Lyall Avenue	Dulwich Wood Childrens Centre	School
Lyall Avenue	Harris Boys Academy East Dulwich	School
Lyall Avenue - Both Sides	Whole Street	Gradient
Lyndhurst Way	Peckham Academy school	School
Maxted Rd	Belham Primary School only	School
Melbourne Grove	Retail area along from Grove Vale	Retail
Mount Adon Park	Whole Road	Gradient
Norwood Road	Retail area Croxted Road - Half Moon Lane	Retail
Oakdale Road - Both Sides	Whole Street	Gradient
Overhill Road - Both Sides	Whole Street	Gradient
Park Hall Road - Both Sides	Retail area around junction with South Croxted Road.	Retail
Peckham Rye - Both Sides	Retail along from Rye Lane to Philip Walk / Dewar Street	Retail
Red Post Hill - One Side	North Dulwich Train Station - Red Post Hill Roundabout	Transport
Reedham Street	Jack Jones Sheltered Housing Unit	SHU
Reedham Street	Bellenden Primary School	School
Ruskin Walk - Both Sides	Whole Road	Gradient
Rye Lane - Both sides	Whole Street	Retail
Seeley Drive - Both Sides	Whole Street	Gradient
Stuart Road	Bredinghurst Secondary School	School
Tintagel Crescent	Goose Green Primary School	School
Townley Road	Alleyn's Junior & Upper School	School
Townley Road	Alleyn's Upper School	School
Underhill Road	From Lordship Lane for 100 metres (outside Blind Persons' School)	School
Underhill Road	Lew Evans Sheltered Housing Unit	SHU
Whorlton Road	Rye Oak Primary School	School
Woods Road	John Donne Primary School	School
Woods Road	Tuke School	School

North East Area Gritting Hot Spots		
Address	Site	Reason
Abbey Street	Retail area along from Maltby Street	Retail
Aberdour Street	Tower Bridge Care Home	SHU
Albion Street	Albion Primary School	School
Albion Street - BOTH SIDES	Retail area from Neptune Street to Renforth Street	Retail
Alexis Street	Alma Primary School	School
Beatson Walk	Peter Hills with St Mary's & St Paul's Primary School	School
Beatson Walk	Subway ramps and stairs	Gradient
Bermondsey Square - BOTH SIDES	Market area	Retail
Bermondsey Street - BOTH SIDES	Retail area from St. Thomas's Street - Long Lane	Retail
Brunel Road	Rotherhithe Underground Station	Transport
Crosby Row	Beormund Primary School	School
Dockhead	Retail area Mill Street - Parkers Row	Retail
Drummond Road	Marden Square Sheltered Housing Unit	SHU
Dunton Road	Retail area in front of Setchell Estate	Retail
Dunton Road	Dunton Road Residential Home	SHU
Elgar Street	Retail area	Retail
Fair Street	Tower Bridge Primary School	School
Farncombe Street	Riverside Primary School	School
Galleywall Road	Southwark Park School (formerly Galleywall School)	School
George Row	St Joseph's RC Primary School - George Row	School
Gomm Road	St Joseph's RC Primary School - Gomm Road	School
Grange Road	Boutcher Church of England Primary School	School
Grange Road	Kintore Way Childrens Centre	School
Grange Road	Retail area along from junction with Tower Bridge Road	Retail
Guys Footbridge	Hospital - Guys access	Hospital, etc.
Hawkstone Road	Rotherhithe Primary School	School
Horselydown Lane - BOTH SIDES	Retail all through	Retail
Ilderton Road	Retail area along from junction with Rotherhithe New Road	Retail
Ilderton Road	Station - South Bermondsey (British Rail)	Transport
Ilderton Road - BOTH SIDES	Road bridge between Surrey Canal Road and Penarth Street	Gradient
Jamaica Road	Subway ramps and stairs	Gradient
John Felton Road	St Michael's RC School	School
Keetons Road	Southwark College Bermondsey Centre - Jamaica Road	School
Keetons Road	Keetons Sheltered Housing Unit	SHU
Kirby Grove	Snowsfields Primary School	School
Lady Dock Walk	Subway ramps and stairs	Gradient
London Bridge Street - BOTH SIDES	Station - London Bridge (British Rail & Underground)	Transport
Long Lane	Retail area along from junction with Weston Street	Retail
Long Lane	Retail area along from junction with Crosby Row	Retail
Lower Road - BOTH SIDES	Retail area from Hawkstone Road to Plough Way	Retail
Lower Road	Surrey Quays Underground Station	Transport
Lower Road	Rose Court Care Home	SHU
Lynton Road	City of London Academy (Southwark)	School
Macks Road	Cherry Garden School	School
Manor Grove	Pilgrims Way Primary School	School

Marlborough Grove	Eveline Lowe Primary School	School
Monnow Road	Spa School	School
Old Jamaica Road	St James C of E Primary School	School
Old Kent Road	Mandela Way subway ramps and stairs both sides	Gradient
Abbeyfield Road	Pedworth Sheltered Housing Unit	SHU
Plough Way	Retail area Lower Road - Trident Street	Retail
Poolmans Street - BOTH SIDES	Stairs down to Albion Channel and bridge over Albion Channel	Gradient
Quebec Way	Alfred Salter Primary School	School
Railway Approach - BOTH SIDES	Station - London Bridge (British Rail & Underground)	Transport
Redriff Road - BOTH SIDES	Lower Road to Surrey Quays Road	Retail
Redriff Road	Subway ramps and stairs	Gradient
Rotherhithe New Road	Rotherhithe Primary School	School
Rotherhithe New Road	Retail area Silwood Street - Corbetts Passage	Retail
Rotherhithe New Road	John Keats Primary School	School
Rotherhithe Old Road	Surrey Quays Underground Station + retail area alongside	Transport
Rotherhithe Street	Retail area along from St. Pauls Avenue	Retail
Rotherhithe Street	Outside farm	Retail
Salter Road	Redriff Primary School	School
Sandgate Street	Old Kent Road - blind people's workshop	Priority
Shad Thames - BOTH SIDES	Retail areas Tower Bridge - Curlew Street	Retail
Silwood Street	George Walter Court Sheltered Housing Unit	SHU
Snowsfields	Retail area Melior Place - Weston Street	Retail
Snowsfields - BOTH SIDES	Weston Street - Great Maze Pond hospital access	Hospital, etc.
Southwark Park Road	Yalding Healthy Living Centre	SHU
Southwark Park Road	Blue Grove House Sheltered Housing Unit	SHU
Southwark Park Road	Harris Academy Bermondsey	School
Southwark Park Road	No. 383 Southwark Park Primary School	School
Southwark Park Road	The Blue Market shopping area (by Rock Grove Way)	Retail
Southwark Park Road - BOTH SIDES	S. James's Road - Galleywall Road	Retail
Spa Road	Retail area along from Alscot Road	Retail
St. Elmo's Road	St John's RC Primary School	School
St. James's Road	Retail area Southwark Park Road towards Strathnairn Street	Retail
St. James's Road - BOTH SIDES	Road bridge between Lynton Road and Rolls Road	Gradient
Surrey Quays Road	Station - Canada Water (Underground) + bus station	Transport
Timber Pond Road	Bacon's Academy to Lagado Mews / Salter Road junction	School
Varcoe Road	Ilderton Primary School	School
Webb Street	Grange Primary School	School
West Lane	Retail area along from Jamaica Road	Retail
Weston Street - BOTH SIDES	St. Thomas Street - Snowsfield Hospital - Guys access	Hospital, etc.
Wolseley Street	Dockhead Fire Station	Emergency

Combined Area Gritting Hot Spots		
Address	Site	Reason
Abbey Street	Retail area along from Maltby Street	Retail
Abbeyfield Road	Pedworth Sheltered Housing Unit	SHU
Aberdour Street	Tower Bridge Care Home	SHU
Adys Road	St Johns and St Clements C of E Primary School	School
Albion Street	Albion Primary School	School
Albion Street - BOTH SIDES	Retail area from Neptune Street to Renforth Street	Retail
Alexis Street	Alma Primary School	School
Alleyn Park	Kingsdale Secondary School to junction with Hunts Slip Road	School
Alleyn Park	Dulwich College Prep School (No. 42)	School
Arnside Street	Retail area along from Walworth Road	Retail
Asylum Road	Retail area along from junction with Meeting House Lane	Retail
Bagshot Street	Retail area along from junction with Mina Road	Retail
Bankside	Bank End - Millennium Bridge	High Footfall
Barry Road	Retail area along from Peckham Rye	Retail
Barry Road	St Anthony's Catholic Primary School	School
Bartholomew Street	Retail area along one side New Kent Road - Great Dover Street	Retail
Bartholomew Street	St Saviour's School New Kent Road - Great Dover Street	School
Beatson Walk	Peter Hills with St Mary's & St Paul's Primary School	School
Beatson Walk	Subway ramps and stairs	Gradient
Bedale Street - BOTH SIDES	Retail area all through	Retail
Bellenden Road - Both Sides	Retail area from Danby Street to Choumert Road	Retail
Bermondsey Square - BOTH SIDES	Market area	Retail
Bermondsey Street - BOTH SIDES	Retail area from St. Thomas's Street - Long Lane	Retail
Bird in Bush Road	Camelot Primary School	School
Blackpool Road	Bus garage to Copeland Road	Transport
Borough High Street - BOTH SIDES	Great Dover Street - Newington Causeway	High Footfall
Borough Road - BOTH SIDES	Whole street	Retail/School
Bowen Drive	Langbourne Primary School	School
Bowen Drive	Bottom section school area	School
Bowen Drive - Both Sides	Whole Road	Gradient
Braganza Street	Station - Kennington Underground	Transport
Brayards Road	Retail Area from Hollydale Road	Retail
Brayards Road	St Mary Magdalene Cof E Primary School	School
Brenchley Gardens	Entrance to New Cemetery	Cemetery
Bricklayers Arms subways	All ramps and stairs	Gradient
Brockley Way	Entrance to Crematorium	Crematorium
Bromar Road	Grove Hill Road - Ivanhoe Road	Gradient
Brook Drive	Brook Drive Sheltered Housing Unit	SHU
Brunel Road	Rotherhithe Underground Station	Transport
Burcher Gale Grove	Gloucester Primary School	School

Camberwell Church Street	Retail Area	Retail
Camberwell Green	Retail area Camberwell New Road - Camberwell Road	Priority
Camberwell New Road	Sacred Heart Roman Catholic Secondary School	School
Camberwell New Road	Bus Garage @Junction with Warner Road	Transport
Camberwell Road	Westmoreland Road - Bowyer Place	Retail
Camberwell Road	Camberwell Green - John Ruskin Street / Bowyer Place	Priority
Carter Street	East Street traders' barrow store	Retail
Casino Avenue - Both Sides	Whole Street	Gradient
Cathedral Street - BOTH SIDES	Retail areas all through	Retail
Champion Hill	Denmark Hill - crossroads	Priority
Champion Park	Station - Denmark Hill (British Rail)	Transport
Chandler Way	Ann Bernardt Nursery & Children's Centre (No. 29)	School
Choumert Road - Both Sides	Retail area along from Rye Lane to Alpha Street	Retail
Clink Street - BOTH SIDES	Retail areas all through	Retail
Cobourg Road	Cobourg Primary School	School
Coldharbour Lane	Retail area Denmark Hill - Crawford Road	Retail
Coleman Road	St Georges C of E Primary School (43)	School
College Road - Both Sides	Kingswood Drive - Crystal Palace Parade	Gradient
Colnbrook Street	St Judes Cof E Primary School	School
Comber Grove	Comber Grove Primary School	School
Commercial Way	Retail area across junction with Sumner Road	Retail
Commercial Way	Retail area along from Naylor Road	Retail
Crawford Road	Crawford Primary School	School
Crosby Row	Beormund Primary School	School
Crossthwaite Avenue	Retail area along from junction with Woodfarrs	Retail
Danecroft Road - Both Sides	Whole Street	Gradient
Daniels Gardens	Tuke School	School
Darwin Street	Darwin Court Sheltered Housing Unit	SHU
Dawes Street	East Street traders' barrow store (Northchurch)	Retail
De Crespigny Park	Maudsley Hospital side along to Denmark Hill	Hospital, etc.
Denmark Hill	Maudsley Hospital along to Champion Park	Hospital, etc.
Denmark Hill	Camberwell Green - Daneville Road	Priority
Deverell Street	Globe Academy	School
D'Eynsford Road	Doctors, o/s library & o/s Court	Hospital, etc.
Dockhead	Retail area Mill Street - Parkers Row	Retail
Dog Kennel Hill	Whole street	Priority
Don Phelan Close	D'Eynsford SHU	SHU
Drummond Road	Marden Square Sheltered Housing Unit	SHU
Dulwich Village	Dulwich Hamlet Junior School	School
Dulwich Village	James Allen's Prep School (No. 2)	School
Dulwich Village and Turney Road	Dulwich Village Church of England Infants School (No. 11)	School
Dunstons Road - Both Sides	Upland Road - Underhill Road	Gradient
Dunton Road	Retail area in front of Setchell Estate	Retail
Dunton Road	Dunton Road Residential Home	SHU
East Dulwich Grove	James Allen's Girls' School	School
East Dulwich Grove	Dulwich Hospital	Hospital
East Dulwich Road	Retail from Goose Green to Gowlett Road	Retail
East Street	Retail area along from Flint Street to Elsted Street	Retail

East Street - BOTH SIDES	Retail area along from Walworth Road to Flint Street	Retail
East Street - BOTH SIDES	Retail area along from Old Kent Road to Congreve Street	Retail
Elba Place	Victory School	School
Elephant & Castle subways	All ramps and stairs	Gradient
Elephant Road	British Rail station New Kent Road - Walworth Road	Transport
Elfindale Road - Both Sides	Whole Street	Gradient
Elgar Street	Retail area	Retail
Evelina Road - Both Sides	Retail area from Howbury Road to Nunhead Green	Retail
Fair Street	Tower Bridge Primary School	School
Farncombe Street	Riverside Primary School	School
Farquhar Road	Bowley Lane - Jasper Rd only	Gradient
Farquhar Road - Both Sides	Whole Street except section in Lambeth	Gradient
Faunce Street	Keyworth Primary School	School
Flint Street	English Martyrs Catholic Primary School	School
Forest Hill Road - Both Sides	Whole Street	Gradient
Fountain Drive - Both Sides	Whole Street	Gradient
Frankfurt Road - Both Sides	Whole Street	Gradient
Friary Road	St Francis RC Primary School	School
Gallery Road	Dulwich College Preparatory School (No. 8)	School
Galleywall Road	Southwark Park School (formerly Galleywall School)	School
George Row	St Joseph's RC Primary School - George Row	School
Gibbon Road	Kimberley Avenue to Evelina Road retail and station	Retail/Transport
Gipsy Hill - East Side	Dulwich Wood Avenue - Woodland Road Retail	Retail
Gomm Road	St Joseph's RC Primary School - George Row	School
Goodrich Road	Goodrich Primary School	School
Grange Road	Boutcher Church of England Primary School	School
Grange Road	Kintore Way Childrens Centre	School
Grange Road	Retail area along from junction with Tower Bridge Road	Retail
Great Suffolk Street	Retail area along from junction with Southwark Bridge Road	Retail
Green Dragon Court - BOTH SIDES	Retail area all through	Retail
Grosvenor Park	Sheltered Housing Unit	SHU
Grove Hill Road (odd numbers)	Camberwell Grove - Ivanhoe Road	Gradient
Grove Lane	Lyndhurst Primary School	School
Grove Lane	Retail area along from Camberwell Church Street	Retail
Grove Lane	Champion Park - Dog Kennel Hill	Priority
Grove Vale	Retail area Coplestone Road to railway bridge	Retail
Grove Vale	Retail area	Retail
Grove Vale	Station - East Dulwich (British Rail)	Transport
Guys Footbridge	Hospital - Guys access	Hospital, etc.
Half Moon Lane - Both Sides	Retail areas along from Herne Hill to Stradella Road	Retail
Hanover Park	Supermarket car park entrance	Retail
Harper Road	Retail area along from junction with Rockingham Street	Retail
Harper Road	Globe Academy to New Kent Road	School
Hawkstone Road	Rotherhithe Primary School	School
Haymerle Road	Haymerle School	School

Heber Road	Heber Primary School	Retail
Herne Hill	Retail areas only	New
Hitherwood Drive - Both Sides	Whole Road	Gradient
Hollingbourne Road - Both Sides	Whole Street	Gradient
Hollydale Road	Hollydale Primary School	School
Hollydale Road	St Thomas the Apostle College to Lugard Road j/w Queens Road	School
Holmedene Avenue - Both Sides	Whole Road	Gradient
Homestall Road	Harris Girls' Academy East Dulwich to Peckham Rye East	School
Honor Oak Park	St Francesca Cabrini RC Primary School	School
Honor Oak Park - East Side	Forest Hill Road - Honor Oak Park Station	Gradient/Transport
Honor Oak Rise	Both Sides	Gradient
Horselydown Lane - BOTH SIDES	Retail all through	Retail
Ilderton Road	Retail area along from junction with Rotherhithe New Road	Retail
Ilderton Road	Station - South Bermondsey (British Rail)	Transport
Ilderton Road - BOTH SIDES	Road bridge between Surrey Canal Road and Penarth Street	Gradient
Inverton Road	Retail + Primary School	Retail/School
Ivydale Road	Ivydale Primary School	School
Jamaica Road	Subway ramps and stairs	Gradient
Jasper Road - Both Sides	Whole Street except section in Lambeth	Gradient
John Felton Road	St Michael's RC School	School
John Ruskin Street	John Ruskin Primary School	School
Keetons Road	Southwark College Bermondsey Centre - Jamaica Road	School
Keetons Road	Keetons Sheltered Housing Unit	SHU
Kelly Avenue	Lister Health Centre @ junction with Peckham Road	Hospital, etc.
Keyworth Street - BOTH SIDES	Southbank University - whole street	School
Kimpton Road	Youth Court	Priority
King and Queen Street	Robert Browning Primary School	School
Kingswood Drive - Both Sides	Whole Street	Gradient
Kirby Grove	Snowsfields Primary School	School
Lady Dock Walk	Subway ramps and stairs	Gradient
Lant Street	Charles Dickens Primary School	School
Larcom Street	St Johns Walworth C of E Primary School	School
Limesford Road	Entrance to Nunhead Cemetery	Cemetery
Linden Grove	Entrance to Nunhead Cemetery	Cemetery
Little Dorrit Court/ Redcross Way	St Josephs RC Primary School	School
Liverpool Grove	St Peter's Walworth C of E Primary School	School
London Bridge Street - BOTH SIDES	Station - London Bridge (British Rail & Underground)	Transport
Long Lane	Retail area along from junction with Weston Street	Retail
Long Lane	Retail area along from junction with Crosby Row	Retail
Lordship Lane - Both Sides	Whole Road	Retail/Gradient
Lower Road	Surrey Quays Underground Station	Transport
Lower Road	Rose Court Care Home	SHU
Lower Road - BOTH SIDES	Retail area from Hawkstone Road to Plough Way	Retail

Lyall Avenue	Dulwich Wood Childrens Centre	School
Lyall Avenue	Harris Boys Academy East Dulwich	School
Lyall Avenue - Both Sides	Whole Street	Gradient
Lyndhurst Way	Peckham Academy school	School
Lynton Road	City of London Academy (Southwark)	School
Macks Road	Cherry Garden School	School
Malfort Road (odd numbers)	Grove Hill Road - Ivanhoe Road	Gradient
Malt Street	Along side of supermarket	Retail
Manor Grove	Pilgrims Way Primary School	School
Manor Place	Police Station to Walworth Road	Emergency
Manor Place	Retail area along from junction with Stopford Road	Retail
Marlborough Grove	Eveline Lowe Primary School	School
Marmont Road	Peckham Park Primary School	School
Marsland Close	Ray Gunter Sheltered Housing Unit	SHU
Maxted Rd	Belham Primary School only	School
Meeting House Lane	Nell Gwynn Childrens Centre	School
Meeting House Lane	Retail area along from Carlton Grove (Acorn Parade)	Retail
Meeting House Lane	Retail area along from Geldart Road	Retail
Melbourne Grove	Retail area along from Grove Vale	Retail
Monnow Road	Spa School	School
Mount Adon Park	Whole Road	Gradient
Nairne Grove	Bessemer Grange Primary School + Early Years	School
New Church Road	Retail area along from Camberwell Road	Retail
Newcomen Street - BOTH SIDES	Borough High Street - Great Maze Pond - Guys hospital access	Hospital
Newington Causeway - BOTH SIDES	Whole street	High Footfall
Norwood Road	Retail area Croxted Road - Half Moon Lane	Retail
Oakdale Road - Both Sides	Whole Street	Gradient
Old Jamaica Road	St James C of E Primary School	School
Old Kent Road	Mandela Way subway ramps and stairs both sides	Gradient
Overhill Road - Both Sides	Whole Street	Gradient
Park Hall Road - Both Sides	Retail area around junction with South Croxted Road.	Retail
Park Street - BOTH SIDES	Retail area Stoney Street - railway bridge	Retail
Peacock Street	Crampton Primary School	School
Peckham Hill Street	Retail area from Peckham High Street to Goldsmith Road	Retail
Peckham Park Road	St Francis RC Primary School	School
Peckham Park Road	Retail area Old Kent Road to Green Hundred Road	Retail
Peckham Park Road	Retail area at junction with Friary Road	Retail
Peckham Road	Oliver Goldsmith Primary School	School
Peckham Road	Lister Health Centre @ junction with Kelly Road	School
Peckham Rye - Both Sides	Retail along from Rye Lane to Philip Walk / Dewar Street	Retail
Penrose Street	St Paul's Cof E Primary School	School
Picton Street	Brunswick Park Primary School	School
Picton Street	Ashbourne SHU opposite school	SHU
Pitman Street	St Joseph's RC Infants School - Pitman St	School
Plough Way	Retail area Lower Road - Trident Street	Retail
Poolmans Street - BOTH SIDES	Stairs down to Albion Channel and bridge over Albion Channel	Gradient
Portland Street	Michael Faraday Primary School	School

Quebec Way	Alfred Salter Primary School	School
Queens Silver Jubilee Walkway	Millennium Bridge - Oxo Tower	High Footfall
Railway Approach - BOTH SIDES	Station - London Bridge (British Rail & Underground)	Transport
Red Post Hill - One Side	North Dulwich Train Station - Red Post Hill Roundabout	Transport
Redcross Way	St Saviour and St Mary Overie School to Marshalsea Road	School
Redriff Road	Subway ramps and stairs	Gradient
Redriff Road - BOTH SIDES	Lower Road to Surrey Quays Road	Retail
Reedham Street	Jack Jones Sheltered Housing Unit	SHU
Reedham Street	Bellenden Primary School	School
Rodney Road	Retail area along from junction with Orb Street	Retail
Rodney Road	Locksfield Sheltered Housing Unit	SHU
Rotherhithe New Road	Rotherhithe Primary School	School
Rotherhithe New Road	Retail area Silwood Street - Corbetts Passage	Retail
Rotherhithe New Road	John Keats Primary School	School
Rotherhithe Old Road	Surrey Quays Underground Station + retail area alongside	Transport
Rotherhithe Street	Retail area along from St. Pauls Avenue	Retail
Rotherhithe Street	Outside farm	Retail
Royal Road	King Charles Court Sheltered Housing Unit	SHU
Ruskin Walk - Both Sides	Whole Road	Gradient
Rye Lane - Both sides	Whole Street	Retail
Salter Road	Redriff Primary School	School
Sandgate Street	Old Kent Road - blind people's workshop	Priority
Seeley Drive - Both Sides	Whole Street	Gradient
Shad Thames - BOTH SIDES	Retail areas Tower Bridge - Curlew Street	Retail
Shorncliffe Road	Walworth Academy	School
Silwood Street	George Walter Court Sheltered Housing Unit	SHU
Snowsfields	Retail area Melior Place - Weston Street	Retail
Snowsfields - BOTH SIDES	Weston Street - Great Maze Pond hospital access	Hospital, etc.
Southampton Way	Oliver Goldsmith Primary School	School
Southampton Way	Retail area from Wells Way - Peckham Grove	Retail
Southampton Way	Retail area along from Havil Street	Retail
Southampton Way	Southwark College	School
Southwark Bridge Road	Fire Station	Emergency
Southwark Bridge Road	Police Station (Nos. 207-209)	Emergency
Southwark Bridge Road - BOTH SIDES	Retail areas from Southwark Bridge to Union Street	Retail
Southwark Park Road	Yalding Healthy Living Centre	SHU
Southwark Park Road	Blue Grove House Sheltered Housing Unit	SHU
Southwark Park Road	Harris Academy Bermondsey	School
Southwark Park Road	No. 383 Southwark Park Primary School	School
Southwark Park Road	The Blue Market shopping area (by Rock Grove Way)	Retail
Southwark Park Road - BOTH SIDES	S. James's Road - Galleywall Road	Retail
Spa Road	Retail area along from Alscot Road	Retail
St. Elmo's Road	St John's RC Primary School	School
St. Giles Road	St. Giles Health Centre along from junction with Peckham Road	Hospital, etc.
St. James's Road	Retail area Southwark Park Road towards Strathnairn Street	Retail

St. James's Road - BOTH SIDES	Road bridge between Lynton Road and Rolls Road	Gradient
Stoney Street - BOTH SIDES	Retail area all through	Retail
Stuart Road	Bredinghurst Secondary School	School
Sumner Avenue footpath	St. James the Great School	School
Surrey Quays Road	Station - Canada Water (Underground) + bus station	Transport
Surrey Square	Surrey Square Infant School	School
Surrey Square	Surrey Square Junior School	School
The Cut	Southwark College Blackfriars Road - Short Street	School
The Cut	Southwark Station Blackfriars Road - Hatfields	Transport
Timber Pond Road	Bacon's Academy to Lagado Mews / Salter Road junction	School
Tintagel Crescent	Goose Green Primary School	School
Toulmin Street	Charles Dickens School	School
Townley Road	Alleyn's Junior & Upper School	School
Townley Road	Alleyn's Upper School	School
Townsend Street	Townsend Primary School	School
Trafalgar Street	Walworth Academy Trafalgar Street - Portland Street j/w East St.	School
Underhill Road	From Lordship Lane for 100 metres (outside Blind Persons' School)	School
Underhill Road	Lew Evans Sheltered Housing Unit	SHU
Upper Ground	Blackfriars Road - Broadwall	Retail
Varcoe Road	Ilderton Primary School	School
Vestry Road	Retail area along from junction with Graces Road	Retail
Victory Place	Victory School	School
Walworth Road - BOTH SIDES	Whole street	Retail
Warham Street	St. John School	School
Warner Road	Bus garage along from junction with Camberwell New Road	Transport
Waterloo Road	Retail area along from junction with Gray Street	Retail
Webb Street	Grange Primary School	School
Webber Street	Friars Primary School	School
Webber Street	Retail area along from Blackfriars Road	Retail
West Lane	Retail area along from Jamaica Road	Retail
West Square	Charlotte Sharman Foundation Primary School-	School
Westmoreland Road - BOTH SIDES	Retail area Walworth Road to Queens Row	Retail
Weston Street - BOTH SIDES	St. Thomas Street - Snowsfield Hospital - Guys access	Hospital, etc.
Whorlton Road	Rye Oak Primary School	School
Willowbrook Road (park side)	Road bridge between Jct with Colegrave Road and Sumner Road	Gradient
Windsor Walk	Station - Denmark Hill (British Rail)	Transport
Wolseley Street	Dockhead Fire Station	Emergency
Woods Road	John Donne Primary School	School
Woods Road	Tuke School	School
Wyndham Road	St Michael Academy to Camberwell New Road including retail	School

Appendix G: Location of Salt Bins

No.	SITE NAME	SITE CODE	PLOT NUMBER	FEATURE LOCATION	EASTING	NORTHING
1	Abbey Street	22500001	18500001.00	East of Maltby Street at junction	533681.29	179420.78
2	Abbey Street	22500001	18500002.00	Junction with Neckinger	533788.00	179415.00
3	Abbey Street	22500001	18500003.00	Maltby street junction Old Jamaica rd	534012.48	179475.13
4	Arnould Avenue	22500096	18500002.00	Junc Champion Hill	532897.00	175504.00
5	Arnould Avenue	22500096	18500003.00	Dowson close	532951.39	175423.72
6	Arnould Avenue	22500096	18500004.00	Opp 1-9	532931.53	175454.93
7	Athenlay Road	22500109	18500001.00	C/o Rosenthorpe Road opp 44	535712.00	174746.00
8	Athenlay Road	22500109	18500002.00	O/s no. 30 (near HOMELEIGH ROAD junction)	535779.00	174867.00
9	Athenlay Road	22500109	18600002.00	Jnc fernholme road	535749.61	174808.59
10	Balfour Street	22500136	18600002.00	Junction of Rooney road	532626.00	178725.38
11	Barry Road	22500157	18500001.00	Pub car Park (The Plough)	533922.18	174007.19
12	Barry Road	22500157	18500002.00	Junc Upland Road	534350.00	174892.00
13	Barry Road	22500157	18600002.00	Jnc Peckham rye	534449.47	175082.98
14	Belvoir Road	22500213	18500001.00	Jnc Overhill road	534325.90	173645.05
15	Boat Lifter Way	22500272	18500001.00	Junc Sweden Gate	536290.00	178934.00
16	Boat Lifter Way	22500272	18500002.00	LC4 on Marina	536366.30	178934.27
17	Bowen Drive	22500298	18500001.00	O/s Beresfeld House	533345.00	172120.00
18	Bowen Drive	22500298	18500002.00	O/s Hoberry House	533353.00	171877.00
19	Bowen Drive	22500298	18600002.00	Jnc Lyall avenue/ kinsey house	533363.86	172005.70
20	Brenchley Gardens	22500325	18500001.00	Cemetery	535790.00	174666.00
21	Brunel Road	22500356	18500001.00	C/o Jamacia Road	535040.00	179589.00
22	Brunel Road	22500356	18500002.00	East of junction with Railway Avenue	535336.00	179785.00
23	Brunel Road	22500356	18500003.00	Salter road jnc Rotherhithe Street by the youth hostel (Size: Small)	535709.77	180203.75
24	Buckstone Close	22500367	18500001.00	Outside 15	535227.08	174206.25
25	Burton Grove	22500384	18500001.00	Burton Grove jnc villa Street (Size: Big)	532777.00	178200.00
26	Camberwell Church Street	22500395	18500001.00	Junction with St. Giles Road	533149.00	176716.00
27	Champion Hill	22500477	18500001.00	At Crossroads	532979.00	175563.00
28	Chandler Way	22502935	18500001.00	Junction Commercial way	533566.83	177029.34
29	Chandler Way	22502935	18500002.00	O/S Ann bernadt childrens centre school	533554.24	177106.78
30	College Road	22500543	18500001.00	Junc Crystal Palace Road/Crystal Palace Parade	533859.00	171235.00
31	College Road	22500543	18500002.00	Opp L/c 71	533862.00	171304.50
32	College Road	22500543	18500003.00	Opposite Fountain Road	533775.00	171518.00
33	College Road	22500543	18500004.00	L/c 67	533846.84	171368.40
34	Commercial Way	22500567	18500001.00	Junction of Gator street	533816.99	177103.56
35	Crescent Wood Road	22500645	18500001.00	O/s Dulwich Wood House	534053.00	172179.00
36	Crescent Wood Road	22500645	18500002.00	Outside Countisbury house	534340.37	172278.61
37	Croxted Road	22500662	18500001.00	JW Pymers Mead opp No 124	532478.00	173494.00
38	Croxted Road			JW Pymers Mead opp No 124	532478.00	173494.00
39	Croxted Road	22500662	18500002.00	jw Lings Coppice by L/c 11 (yellow small bin)	532715.00	172811.00
40	Croxted Road			jw Lings Coppice by L/c 11 (large green bin)	532715.00	172811.00
41	Crystal Palace Road	22500676	18600004.00	Outside Surgery	534077.32	174750.81
42	Daniels Road	22500706	18500001.00	Daniels Road/Tappesfield junction by green Cabinet	535168.00	175695.00
43	Daniels Road	22500706	18500002.00	Daniels Road/Linden Grove jw Deans buildings	535308.00	175719.00
44	Dawes Street	22500720	18500001.00	Junction of Deans buildings	532759.15	178513.31
45	Dawes Street	22500720	18500002.00	Junction of Aylesbury road	532922.28	178270.43
46	Deal Porters Way	22500731	18500001.00	Junc Surrey Quays	535458.00	179397.00
47	Denmark Hill	22500746	18500001.00	C/o Ferndene Road	532469.00	175510.00
48	Denmark Hill	22500746	18500002.00	Junction with Sunray Avenue	532628.00	175275.00
49	Denmark Hill	22500746	18500003.00	Junction with Champion Park	532705.00	176016.00
50	Denmark Hill	22500746	18500004.00	Opp A&E	532629.46	176145.30
51	Diamond Street	22500768	18500001.00	Junction of Chanlder way	533524.63	177157.20
52	Donkey Alley	22500790	18500001.00	Next to L/C 5	534454.90	173970.82
53	Drake Close	22502964	18500001.00	Drake Close jnc Middleton Drive (Size: Big)	535863.63	179792.57
54	Dulwich Village	22500819	18500001.00	By L/c 13	533151.97	174112.49
55	Dulwich Wood Avenue	22500823	18500001.00	Opposite No. 21	533546.00	171179.00
56	Dulwich Wood Park	22500829	18500001.00	Goose Green R/a x2/ Paxton R/a	533190.00	171663.00
57	Dulwich Wood Park	22500829	18500001.00	Goose Green R/a x2/ Paxton R/a	533190.00	171663.00
58	Dulwich Wood Park	22500829	18500002.00	L/c 4	533216.00	171638.00

59	Dulwich Wood Park	22500829	18500003.00	Jnc Lymer avenue	533748.46	171506.80
60	Dulwich Wood Park	to be added		opp junction with Farquhar Road	533582.00	171452.00
61	Dunstons Road	22500836	18500001.00	O/s 109 Goodrich Road	534392.00	174149.00
62	East Dulwich Grove	22500852	18500001.00	Jnc Hillsboro road	533290.00	174839.00
63	East Street	22500867	18500001.00	By Taylor/Naylor House	532954.00	178466.00
64	East Street	22500867	18500002.00	Junction with Congreve Street	533240.00	178570.00
65	Etherow Street	22500918	18500001.00	Jnc Norcroft garden	534055.39	173986.33
66	Eynella Road	22501557	18500008.00	Outside Lloyds bank near jw Lordship Lane	533886.61	173997.90
67	Farquhar Road	22500940	18500001.00	Opp L/c 5	533666.28	170890.39
68	Farquhar Road	22500940	18500002.00	At junction with Dulwich Wood Road	533657.00	171196.00
69	Farquhar Road	22500940	18500003.00	Junction with Bowley Close	533691.00	170955.00
70	Farquhar Road	22500940	18500004.00	Jnc dulwich wood park	533557.52	171437.03
71	Fenham Road	22500950	18500001.00	Junction of Nutcroft road	534638.24	177181.44
72	Forest Hill Road	22500974	18500001.00	Junc Dunstons Road	534719.00	174548.00
73	Forest Hill Road	22500974	18500002.00	Outside Cemetary	535070.00	174171.00
74	Forest Hill Road	22500974	18500003.00	Brenchley Gardens junction	535151.00	174128.00
75	Forest Hill Road	22500974	18500004.00	Jnc Therapia road	534967.07	174284.26
76	Fountain Drive	22500985	18500001.00	Opp L/c 11	533860.39	171592.45
77	Fountain Drive	22500985	18500003.00	40m from college road	533738.82	171688.93
78	Friern Road	22501002	18500001.00	Friern Road jnc Etherow Street (Size: small)	534124.00	173970.00
79	Giles Coppice	22501048	18500001.00	Junc Kingswood Drive	533495.00	171625.00
80	Goodrich Road	22501082	18500001.00	Opp 118	534488.23	174057.17
81	Grange Road	22501101	18500001.00	West of Spa Road at junction	533626.00	179104.00
82	Green Dale	22501137	18500001.00	Greendale jnc East dulwich Grove (Size: Small)	533209.00	174695.00
83	Grove Hill Road	22501155	18500001.00	Junc Malfort Road	533425.00	175869.00
84	Grove Hill Road	22501155	18500002.00	Grove Hill Road outside School (Size: Big)	533228.00	175773.00
85	Grove Hill Road	22501155	18500003.00	Jnc camberwell grove	533260.01	175822.27
86	Grove Hill Road	22501155	18500004.00	Jnc camberwell grove	533277.88	175832.75
87	Grove Lane	22501157	18500001.00	De Crespigny Park	532884.23	176398.76
88	Grove Lane	22501157	18500003.00	Camberwell Grove	532981.45	176106.41
89	Hawkslade Road	22501218	18500001.00	Behind L/C 8 (near Anthenley Road junction)	535654.46	174704.61
90	Herne Hill	22503024	18500002.00	Holmedene Avenue	532278.63	174734.89
91	Herne Hill	22503024	18500003.00	Frankfurt Road	532382.00	174854.00
92	Herne Hill	22503024	18600003.00	Holligbourne road	532233.47	174696.10
93	Herne Hill	22503024	18500005.00	Jnc Danecroft road	532414.03	174904.20
94	Herne Hill	22503024	18500006.00	Jnc Elfindale road	532339.83	174803.68
95	Honor Oak Rise	22501284	18500001.00	Honour Oak Rise jnc Forrest hill road (Size: Big)	535246.27	174064.99
96	Honor Oak Rise	22501284	18500002.00	25-79	535311.91	174214.18
97	Honor Oak Rise	22501284	18500003.00	Outside 21	535317.11	174175.48
98	Humphrey Street	22501313	18500001.00	Opp JJB Sports	533732.00	178393.00
99	Hunts Slip Road	22501316	18500001.00	Junction of Hunts Slip Road with Alleyn Park	533161.00	172370.00
100	Ilderton Road	22501322	18500001.00	Ilderton Road outside shops at Rotherhithe New Road jnc (Size: Big)	534933.00	178359.00
101	Inverton Road	22501330	18500001.00	Near no. 83B	535627.00	175141.00
102	Ivydale Road	22501337	18500001.00	Outside 42	535575.00	175818.00
103	Ivydale Road	22501337	18500002.00	O/s No. 50	535587.00	175798.00
104	Ivydale Road	22501337	18500003.00	O/s No. 93	535632.00	175698.00
105	Jasper Road	22501360	18500001.00	Opposite L/C 5	533600.20	171001.40
106	Jasper Road	22501360	18500002.00	L/C 2	533632.00	170943.00
107	Jasper Road	22501360	18500003.00	Opposite L/C11	533679.70	171069.20
108	Jasper Road	22501360	18500004.00	Outside 2	533680.00	171067.00
109	Kelvington Road	22501381	18500001.00	Behind L/C 11	535577.81	174567.25
110	Kingswood Drive	22501423	18500001.00	Junc Heitherwood Drive	533635.00	171814.00
111	Kingswood Drive	22501423	18500002.00	By L/C 21	533385.09	171609.20
112	Kingswood Drive	22501423	18500003.00	Near jnc Bowen drive	533396.74	171610.20
113	Kipling Street	22501429	18500001.00	Junction with Snowfields	532860.11	179864.71
114	Lanbury Road	22501459	18500001.00	Near no. 50	535658.37	175112.17
115	Limesford Road	22501508	18500001.00	Opposite no. 25	535649.00	175299.00
116	Limesford Road	22501508	18500001.00	Opposite no. 25	535649.00	175299.00
117	Linden Grove	22501510	18500001.00	Opp L/c 29	535275.71	175668.14
118	Linden Grove	22501510	18500004.00	Behind L/C 36	535343.73	175724.48
119	Linden Grove	22501510	18500005.00	Juntion of Oakdale road	535511.68	175935.38
120	Linden Grove	22501510	18500006.00	119	535354.91	175774.07
121	Little Bornes	22501524	18500001.00	By L/C 4 opp jw Rouse Gardens	533246.51	171882.99

122	Liverpool Grove	22501528	18500001.00	Liverpool Grove opposite Lytham street jnc (Size: Small) in church yard	532577.00	178115.00
123	Long Lane	22501547	18500001.00	West of Kipling Street at junction	532844.81	179636.98
124	Long Lane	22501547	18500002.00	Junction with Bermondsey Street	533261.00	179406.00
125	Lordship Lane	22501557	18500002.00	O/s Day care 269	533717.00	174374.00
126	Lordship Lane	22501557	18500003.00	Junction with Barry Road	533927.00	173990.00
127	Lordship Lane	22501557	18500004.00	Next to the Sea Cadets entrance	534545.00	173150.00
128	Lordship Lane	22501557	18500005.00	Lordship Lane jnc Court Lane (Size: Big)	534074.00	173683.00
129	Lordship Lane	22501557	18500007.00	Lordship Lane jnc Townley Road by Medical Centre (Size: Big)	533891.00	174000.00
130	Lower Road	22501584	18500001.00	West of Plough Way at junction os No. 1 barclays Bank, Plough Way	535841.00	178810.00
131	Lower Road	22501584	18500002.00	West of Plough Way opposite junction os No. 247 Madley.	535854.00	178789.00
132	Lyall Avenue	22501600	18500001.00	O/s Nursery	533549.46	171984.08
133	Lyall Avenue	22501600	18500002.00	Outside Dowell house	533511.19	171970.84
134	Lyall Avenue	22501600	18500003.00	Opp Buchanan house	533492.82	172098.89
135	Lynton Road	22501616	18500001.00	Lynton Road outside the school (Size: Big)	534416.00	178500.00
136	Melford Road	22501705	18500001.00	By L/C 14	534497.02	173478.48
137	Marrow Street	22501713	18500001.00	Marrow Street jnc Villa Street (Size: Big)	532803.00	178148.00
138	Marrow Street	22501713	18500002.00	Marrow Street jnc Queens Row (Size: Small)	532530.54	178003.28
139	Merttins Road	22501716	18500001.00	Opposite no. 8 (behind tree)	535808.00	174962.61
140	Milo Road	22501726	18500001.00	jw Lordship Lane	533720.64	174268.06
141	Mount Adon Park	22501749	18500001.00	Next to green street cabinet on SW side of road, near junction with Lordship Lane	534094.38	173693.81
142	Mount Adon Park	22501749	18500002.00	In scrub area on border with Dawson's Hill (Dunstons Road / Upland Road end)	534208.00	173842.00
143	Mount Adon Park	22501749	18500003.00	Mount Adon Park by lamp coloumn 3	534128.11	173677.78
144	New Globe Walk	22503078	18500001.00	New Globe Walk outside 24 (Size: Big)	532214.22	180516.19
145	North Cross Road	22501808	18500001.00	os No 9 at jw with Ulverscroft Road	534053.00	174923.00
146	Nunhead Green	22501818	18500001.00	nr LC 10828 Opp Cheam St	534961.00	175826.00
147	Nunhead Grove	22501816	18500001.00	O/s No. 1 Nunhead Grove (Nunhead Lane junction)	534958.00	175748.00
148	Nunhead Lane	22501815	18600002.00	os Tanswell Court opp Man of Kent Pub	534912.76	175761.33
149	Oakdale Road	22501829	18500001.00	o/s St Asaph Court	535515.00	175946.00
150	Omega Gate	22501865	18500001.00	Junction of Redriff road	536197.38	179327.80
151	Overhill Road	22501880	18500001.00	Opp 63	534498.26	173832.65
152	Overhill Road	22501880	18500002.00	Junc Rockbank	534220.00	173598.00
153	Overhill Road	22501880	18600004.00	61	534527.91	173863.48
154	Peckham Hill Street	22501926	18600013.00	Jnc Queens road	534230.43	176788.19
155	Peckham Rye	22501941	18500001.00	Peckham Rye jnc Strakers Road (Size: Big)	534790.00	175294.00
156	Peckham Rye	22501941	18500002.00	Peckham rye jnc Homestall Road (Size: Big)	535206.00	175073.00
157	Pioneer Street	22502794	18500001.00	Junction of Jocelyn road	534047.16	176822.86
158	Portland Street	22502002	18500001.00	Portland Street jnc Hopwood Road (Size: Small)	532812.00	177901.00
159	Red Post Hill	22502053	18500001.00	By L/c 44	532874.69	174561.44
160	Redriff Road	22502063	18500002.00	O/S n.o 3 Brunswick house	536066.18	179277.76
161	Rock Hill	22502087	18500001.00	Opp l/c3	533844.39	171779.84
162	Rodney Road	22502094	18500001.00	West of Catesby Street	532831.58	178646.84
163	Rope Street	22502105	18500001.00	By Pier 327 x 2	536596.00	179107.00
164	Rope Street	22502105	18600003.00	O/S n.o 4 Rope street	536329.69	179019.87
165	Rope Street	22502105	18600004.00	O/S Surrey docks fitness and water sport centre	536167.91	179035.34
166	Rosenthorpe Road	22502110	18500001.00	Opposite L/C 7 os No. 46A	535643.00	174830.00
167	ROTHERHITHE TUNNEL	22500000	18500001.00	Tunnel Road - East bound slip o/s City Business Centre on island	535072.15	179606.68
168	Rouse Gardens	22502143	18500001.00	By L/C 10	533281.03	171719.01
169	Rupack Street	22502151	18500001.00	Junction of St Marys Church street	535140.60	179699.30
170	Rye Hill Park	22502162	18500001.00	Opp 57	535213.56	175236.53
171	Rye Hill Park	22502162	18500002.00	Opp 210-296	535172.00	175158.00
172	Rye Hill Park	22502162	18500004.00	O/s 34-120	535140.40	175255.84
173	Rye Lane	22502166	18500001.00	x1 of 5	534179.86	176544.83
174	Rye Lane	22502166	18500002.00	x2 of 5	534142.69	176662.81
175	Rye Lane	22502166	18500003.00	x3 of 5	534139.48	176684.86
176	Rye Lane	22502166	18500004.00	x4 of 5	534433.33	176015.16
177	Rye Lane	22502166	18500005.00	Jnc Bounemouth road	534304.83	176233.21
178	Rye Road	22502174	18500001.00	Opposite no. 8	535530.00	175066.00
179	Salter Road	22502181	18500001.00	Junc Rothehithe street	535611.00	180071.00
180	Salter Road	22502181	18500002.00	Junction with Downtown Road	536453.00	179778.00
181	Salter Road	22502181	18500003.00	Surrey Water Pond - Next to Surrey Water street sign	535649.48	180105.21

182	Seeley Drive	22502216	18500001.00	O/s Telfe House	533465.00	171770.00
183	Seeley Drive	22502216	18500002.00	O/s Dashwood House	533513.00	172054.00
184	Seeley Drive	22502216	18500003.00	O/s Shops	533516.80	171929.59
185	Seeley Drive	22502216	18600004.00	Outside Sawyer house	533430.24	171707.55
186	South Croxted Road	22502271	18500001.00	Outside 111	532927.44	172022.46
187	Southampton Way	22502278	18600006.00	Junction of Havil street	533131.44	177177.15
188	Southwark Park Road	22502293	18500001.00	O/s Tesco	534385.00	178806.00
189	Southwark Park Road	22502293	18500002.00	Junction with Longly Street	534172.00	178838.00
190	Southwark Park Road	22502293	18500003.00	Junction with Galleywall os pub	534709.00	178792.00
191	St Giles Road	22502337	18500001.00	O/S Bentley house	533140.64	176759.21
192	St Marychurch Street	22502353	18500001.00	St Mary Church Street outside school by lamp coloumn 15 (Size: Big)	535172.00	179820.00
193	St Thomas Street	22502357	18500001.00	Junction with Great Maze Pond	532846.00	180108.00
194	Stradella Road			jw Burbage Road	532434.00	174169.00
195	Stuart Road	22502403	18500001.00	By L/C 14	535521.96	175136.58
196	Sydenham Hill	22502448	18500001.00	By left corner (Crescent Wood Rd)	534409.00	172281.00
197	Sydenham Hill	22502448	18500002.00	At mini-roundabout jw Eliot Bank (approach to Jw Kirkdale)	534704.00	172737.00
198	Sydenham Hill			At mini-roundabout (junction with Kirkdale) northbound approach to roundabout near house No 133	534677.00	172721.00
199	Sydenham Hill			At mini-roundabout (junction with Kirkdale) Southbound exit from roundabout, outside Sedley Court	534690.00	172707.00
200	Townley Road	22502537	18500002.00	Behind L/C17 opp Calton Avenue os Alleyns Junior School	533268.91	174621.63
201	Townley Road	22502537	18500003.00	at LC15 os Townley Rd Health Clinic near jw Lordship Lane	533653.00	174479.00
202	Turney Road	22502561	18500001.00	Turney Road outside school at Dulwich Village jnc (Size: Big)	533130.00	174170.00
203	Turney Road	22502561	18500002.00	Turney Road jnc Burbage Road (Size: Big)	532807.00	173956.00
204	Turney Road	22502561	18500003.00	Turney Road underneath Railway Bridge (Size: Small)	532454.00	173695.00
205	Turney Road	22502561	18500004.00	Outside school	533114.15	174124.42
206	Underhill Road	22502577	18500001.00	O/s Blind School	534560.00	173330.00
207	Underhill Road	22502577	18500002.00	Opp Overhill Road	534683.00	174043.00
208	Underhill Road	22502577	18600004.00	S/o 160	534514.30	174367.88
209	Walworth Road	22502642	18500001.00	West of Wansey Street	532172.00	178606.00
210	Walworth Road	22502642	18500002.00	Opposite East Street	532318.00	178249.00
211	Waveney Avenue	22502662	18500002.00	O/s No. 24 Rye day Nursery (yellow bin)	534942.02	175344.61
212	Waveney Avenue	22502662	18500002.00	opp Rye day Nursery (green bin)	534942.02	175344.61
213	Windsor Walk	22502725	18500001.00	Grove lane	532949.46	176197.60
214	Wood Vale	22502747	18500001.00	Forest Hill junction	535073.00	174144.00

Appendix H: Weather Information Contact Details

Forecasters Direct Line

Forecast manager

Actions E-mail

Website [Metdesk](#)

Appendix I: Contractor and Client Standby Officer Rota*

Contractor Standby officer Rota	Client Standby officer Rota
*Internal Supplementary Document only	*Internal Supplementary Document only

Appendix J: Key Contacts

Client Contacts

Winter Service Managers

Ken Sorhaindo
Alwyn Samuel
(Mon-Friday) decision making Inderpaul Plaha

Client Standby Officers

George Mellish
Ryan McGibbon
Paul Foster

Emergency Duty Officer

020 7525 5000

Contractors' Contacts

Carriageway
FM Conway Managers Jon Russell (Contracts Manager) – Michael Bedding (Core Service Manager) – Supervisors: Andy Bolton (Reactive Supervisor) – Callout Officers: Michael Bedding (Core Service Manager) – Andy Bolton (Reactive Supervisor) –
Footway Salting
Nick Mellish (Cleaning, Grounds Maintenance and Tree Service Manager) – Leon Williams (North West Area Manager) – Charlie Wells (North East Area Manager) – Chris White (South Area Manager) – Dave Granger (Central Area Manager) –

Appendix K: Review of Southwark's Resilience Routes

BACKGROUND INFORMATION

1. The Well-Managed Highway Infrastructure: A Code of Practice 2016 recommends that within a highway network hierarchy, a 'resilient network' should be identified to which priority is given through maintenance and other measures to maintain economic activity and access key services during extreme weather -Recommendation 20.
2. The Government's response to the 2014 Transport Resilience Review identified a need for local authorities to develop and identify a resilient network for their highway network. This network is expected to be based on risk and need as well as the road classifications of the network. The designated resilient network provides a prioritisation for the overall highway network on where to direct resources to ensure the network remains open or is reopened first after an incident.
3. The DfT also asks that consideration of industrial action, major incidents and other local risks beyond weather related incidents impacting on the highway is incorporated into the resilient network. The Government also recommends that the network is reviewed every two years. It has been 10 years since our resilient network was last reviewed and so this review has been undertaken.
4. **Community impact statement:** A safe, efficient and well maintained public highway network is integral to the well being of the travelling public.
5. **Resource implications:** The preparation, updating and maintaining the resilient network will be undertaken from existing resources in the Highways Division. The costs for the additional salt/gritting treatments will be funded from the current revenue budget for highway maintenance.
6. **Legal implications:** There are no specific legal implications associated with the resilient network other than contributing to the Council's statutory requirements under the relevant highways legislation.

Southwark Council's 2020 Risk Based Approach to a Resilient Network

Well-managed Highway Infrastructure: A Code of Practice requires all highway authorities to adopt a risk based approach to asset management by October 2018. There are thirty-six recommendations in the new code and one of them is that the resilient network is reviewed.

Southwark Council has reviewed its street list of adopted highways, incorporating new adopted highways and removing those roads that have been stopped-up or incorrectly classified as publicly maintained highway, when they may actually be housing land. We reviewed all of our roads against a list of twenty risks, outlined below:

- Is the road on the original Resilience Road Network (of economic importance and gritted in winter)
- Presence of bus routes running through the road section
- Presence of cycle routes running through the road section
- Proximity of hospitals (at risk groups/ vulnerable persons, infirm elderly)
- Proximity of schools (vulnerable young persons)
- Proximity of train/tube stations (strategic transport network access)
- Is the road section classed as traffic sensitive by the Network Management team.
- Presence of key food stores in the road section
- Proximity of rest centers (premises identified for temporary housing evacuees in an emergency situation)
- The current inspection frequency of the road according to our network hierarchy
- The environs of the road section (residential dwellings, multi-occupancy flats, retail/shopping)
- The road type (distributor road likely to carry HGVs, local road or cul de sac that has no through traffic)
- Proximity of GP surgeries (at risk groups/ vulnerable persons, infirm elderly)
- Proximity of fire stations
- Proximity of business parks or industrial estates
- Proximity of bus stations
- Proximity of care homes (vulnerable persons, infirm elderly)
- Proximity of police stations
- Proximity of ambulance stations
- Proximity of Utility apparatus (water treatment works, power sub-stations, etc.)

A pair-wise comparison of these twenty different elements was undertaken for the carriageway (see Table below) by senior management and engineers to establish the impact of each on the highway and thus establish a weighting. Each element was compared in turn with every other element and a score recorded from 1 to 5, where:

- 5 = much more important
- 4 = more important
- 3 = about the same
- 2 = less important
- 1 = much less important

Southwark Winter Maintenance & Service Plan

	Grit Route	Bus Route	Cycle route	Near Hosp	Near School	Near Station	Traffic sens	Food Store	Rest Centre	Insp Freq	Envi-rons	Road Type	Near GP	Fire station	Busi Parks	Bus Stat	Care Home	Police Station	Ambulance	Utility App	Total	%age
Grit Route		3	5	3	4	4	3	4	4	5	5	4	3	3	4	3	3	3	3	3	69	6.05%
Bus Route	3		5	3	3	3	3	4	3	4	3	5	3	2	4	3	2	2	2	2	59	5.17%
Cycle route	1	1		2	3	3	2	2	1	2	2	2	2	1	2	2	2	1	1	1	33	2.89%
Near Hospital	3	3	4		5	3	5	5	5	5	5	5	5	3	5	5	5	3	3	3	80	7.01%
Near Schools	2	3	3	1		2	4	2	2	2	3	2	2	1	3	2	2	1	1	1	39	3.42%
Near Station	2	3	3	3	4		4	4	4	4	4	4	4	2	4	3	4	1	1	1	59	5.17%
Traffic sensitive	3	3	4	1	2	2		2	2	2	2	3	1	1	2	1	1	1	1	2	36	3.16%
Key Food Store	2	2	4	1	4	2	4		2	2	4	4	1	1	2	1	1	1	1	1	40	3.51%
Rest Centre	2	3	5	1	4	2	4	4		4	4	4	3	1	4	3	3	1	1	2	55	4.82%
Insp Freq	1	2	4	1	4	1	4	4	2		2	3	2	1	2	1	1	1	1	1	36	3.16%
Envi-rons	1	3	4	1	3	2	4	2	2	4		3	1	1	2	1	2	1	1	1	39	3.42%
Road Type	2	1	4	1	4	2	3	2	2	3	3		2	1	2	1	1	1	1	1	37	3.24%
Near GP	3	3	4	1	4	2	5	5	3	4	5	4		2	4	4	3	2	2	3	63	5.55%
Fire station	3	4	5	3	5	4	5	5	5	5	5	5	4		5	4	4	3	3	4	81	7.10%
Business Parks	4	2	4	1	3	2	4	4	2	4	4	4	2	1		2	2	1	1	2	49	4.29%
Bus Station	3	3	4	1	4	3	5	5	3	5	5	5	2	2	4		4	2	2	2	64	5.61%
Care Homes	3	4	4	1	4	2	5	5	3	5	4	5	3	2	4	2		2	2	2	62	5.43%
Police	3	4	5	3	5	5	5	5	5	5	5	5	4	3	5	4	4		3	4	82	7.19%
Ambulance	3	4	5	3	5	5	5	5	5	5	5	5	4	3	5	4	4	3		4	82	7.19%
Utility Apparatus	3	4	5	3	5	5	4	5	4	5	5	5	3	2	4	4	4	2	2		76	6.66%
Total																					1141	100.02

For example, a road on the resilience network was considered to be of about the same importance as it having bus routes running through it, so it scored three. However, it was considered much more important than if the road had a cycle route running through it (salt/grit is not activated by bicycle wheels), so it scored five. When these individual scores were totaled for each element a percentage or weighting was established.

	Weighting	Values	Risk score	Weighted Risk Factor
Grit Route	0.0605	Not on Resilience Network	0	0
		On Resilience Network	1	0.0581
Bus Routes	0.0517	No buses	0	0
		Bus route	1	0.0502
Cycle routes	0.0289	No cycle route	0	0
		Cycle route	1	0.0295
Near Hospital	0.0701	Not near hospital	0	0
		Near hospital	1	0.0677
Near Schools	0.0342	Not near school	0	0
		Near school	1	0.0334
Near Station	0.0517	Not near station	0	0
		Near station	1	0.0502
Traffic sensitive	0.0316	Not Traffic sensitive	0	0
		Traffic sensitive	1	0.0311
Key Food Store	0.0351	No Key food stores	0	0
		Key food stores	1	0.0350
Rest Centre	0.0487	No Rest Centre	0	0
		Rest Centre	1	0.0470
Inspection Frequency	0.0316	12	0	0
		6	0	0
		3	0	0
		1	1	0.0316
Environs	0.0342	Residential	0	0
		Multi-occupancy	0	0
		Retail/business	1	0.0342
Road Type	0.0324	Cul de sac	0	0
		Local Road	0	0
		Distributor/ A road	1	0.0324
Near GP Surgery	0.0555	Not near GP Surgery	0	0
		Near GP Surgery	1	0.0541
Fire station	0.0710	No Fire Station	0	0
		Fire Station	1	0.0685
Business Parks	0.0429	No Business Park	0	0
		Business Park	1	0.0430
Bus Station	0.0561	No Bus Station	0	0
		Bus Station	1	0.0549
Care Homes	0.0543	No Care Home	0	0
		Care Home	1	0.0533
Police Station	0.0719	No Police Station	0	0
		Police Station	1	0.0693
Ambulance Station	0.0719	No Ambulance Station	0	0
		Ambulance Station	1	0.0693
Utility Apparatus	0.0666	No Utility Apparatus	0	0
		Utility Apparatus	1	0.0645

Weighted Risk Score

These weighted risk factors were applied for each of the twenty data sources recorded against every road section in Southwark and added together to produce a final comprehensive risk-based score for that road (extract below).

--	--

[illegible]

Any road that scored above the risk factor weighting for gritted routes (0.0581) was specifically considered for inclusion in the revised gritting routes. However, the council does not have the resources to treat all of the potential roads identified in the risk assessment. Therefore, where an existing parallel gritted route could be identified or access from the resilient network was adjacent, greater confidence could be assured that economic activity and access to key services could be maintained during extreme weather and the risk rating score was adjusted to reflect that resilience was available in alternative routes.

The gritting routes were re-examined in light of junction improvements, prohibited turns and developments on the highway network since the last review. Efficiencies were sought by eliminating some of the double running along College Road, Kingswood Drive and Dulwich Wood and Crystal Palace Road (by reversing the flow of route 1 through Fountain Drive, so route 2 can cover one side of Dulwich Wood Park and route 1 the other side).

Gaps in Lordship Lane, Albany Road, Salter Road, East Dulwich Road, Lower Road, Rotherhithe New Road, Evelina Road, Nunhead Lane, Hawkstone Road were identified and incorporated into the gritting routes

The review of the resilient road network recommended that Bowen Drive (three schools and multiple occupancy dwellings), Camberwell Green (surgery and library), Galleywall Road (bus routes and multiple occupancy dwellings) and Rolls Road (strategic B Road) were also incorporated into the gritting routes.

The old disjointed route 4: Urban Priority Route was dividing up into what was route 5: Urban Resilience Route (now route 4) and route 1 as appropriate.

The result of the review of the resilience network was an increase of approximately 12.3km of extra gritting. This was offset against the efficiency of incorporating the old Urban Priority route 4 into other gritting routes.

Appendix L –Borough Gritting Map

