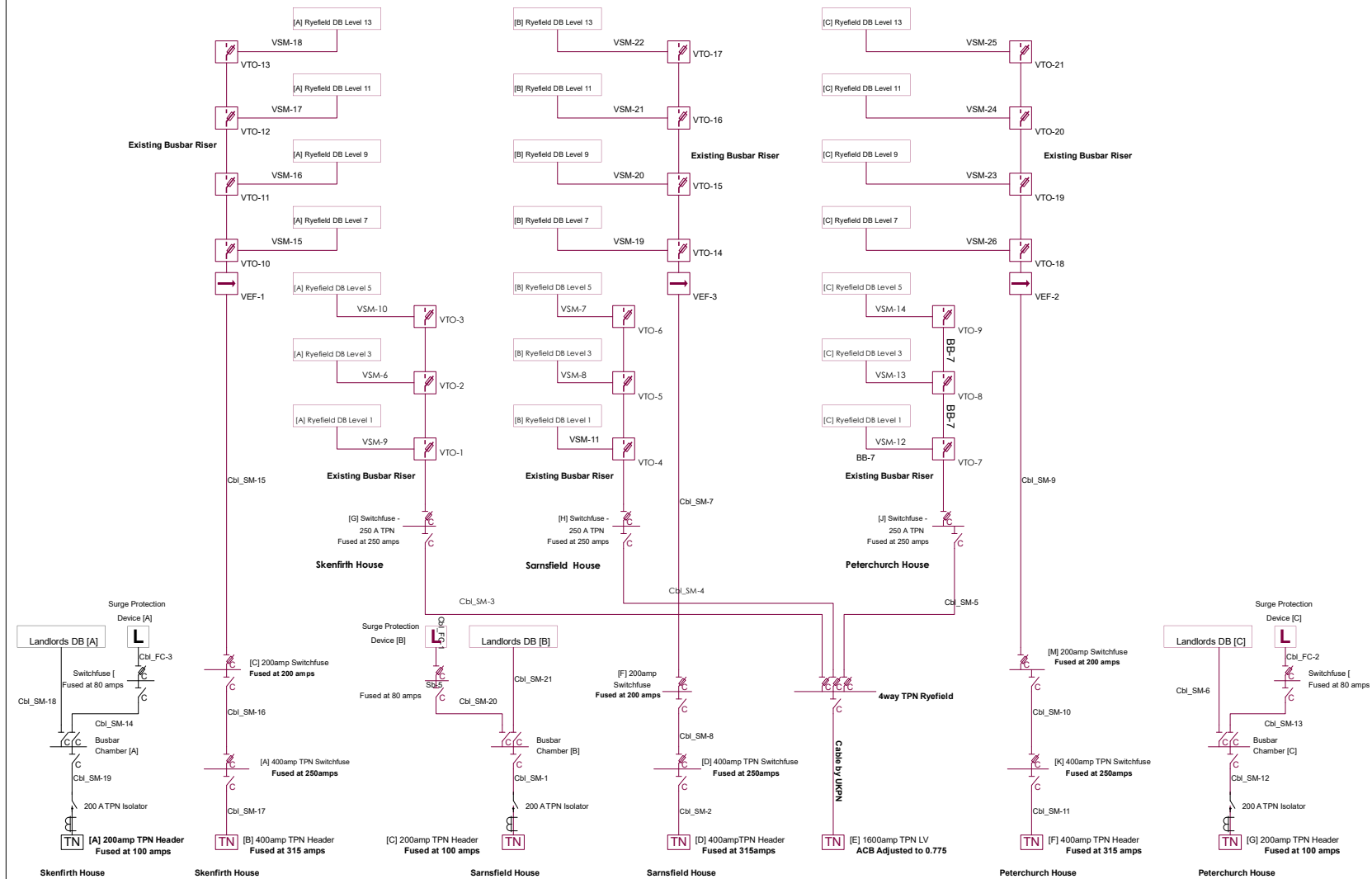


1) The type of existing busbar riser, which has been retained, and its method of connection to the DB's are not supported by the Amtech ProDesign program. To enable the calculation data to be initiated it has been necessary to show the DB's connected differently to those installed on site. The connections shown for this purpose are VSM-9 to VSM-26, VTO-1 to VTO-21 and VEF-1 TO VFE3. The defaults of these items have been set high enough that they will have no impact on the loadings or the discrimination calculations.

2) It has been stipulated, by the Client, that there is not requirement for a single point of isolation between the Supply Authority ACB and the 4 way Ryefield Distribution Board. This is not an error or oversight on our part.

3) Cable references used, are for the benefit of identification within the design software. The references used on site may vary from those shown on this schematic.

4) Locations used on this drawing are indicative only, and are not intended to be representative of actual site locations.



B	Switchfuses B,E and L removed
A	CONTRACT ISSUE
ENVIRONTECH M&E SERVICES LTD WALTHAM ABBEY TEL 01992 769274	
STATUS <b>CONTRACT</b>	
CLIENT LONDON BOROUGH OF SOUTHWARK	
DESCRIPTION ELECTRICAL INFRASTRUCTURE REFURBISHMENT SARNSFIELD, SKENFRITH & PETERCHURCH HOUSE	
DRAWING NO.	DATE
	OCT 2017
DRAWN BY	REV
R.O.	B