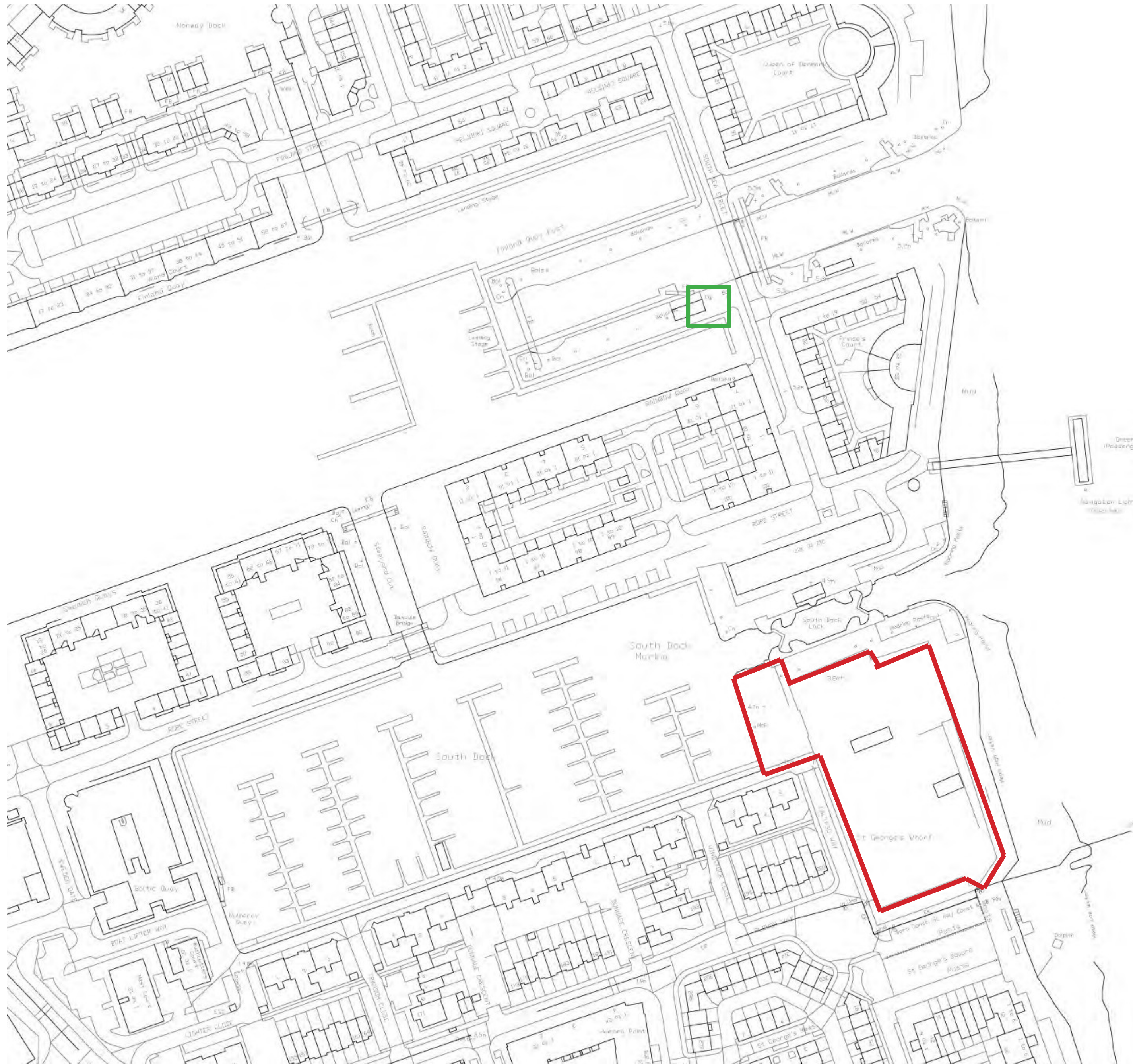


# SOUTH DOCK MARINA HEALTH & SAFETY PROJECT



## The Proposal

The proposal for South Dock Marina (site highlighted in red) looks to provide the berth holders of South Dock with new wash facilities as well as a complete reorganisation of the boatyard and corresponding workshop spaces to create a more structured and safer workflow, tackling key health and safety issues.

The location highlighted in green shows the proposed site for a new substation that will be dedicated to increasing the capacity for Greenland Dock, with the aim of resolving the current usage issues experienced by berth holders.



# ○ SOUTH DOCK MARINA HEALTH & SAFETY PROJECT ○

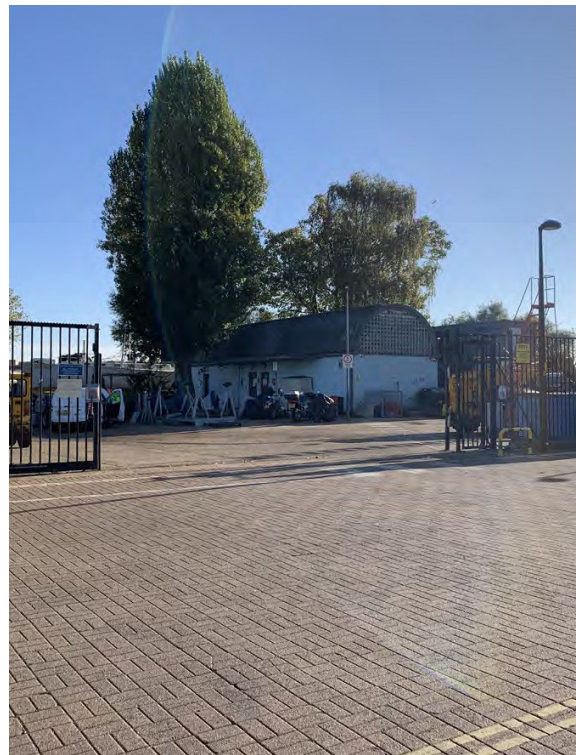
## Health and Safety Issues

## Existing Site Plan



### 1. UNSAFE ACCESS / ESCAPE

The access to the units is unsuitable as the access is very narrow and not of solid made ground in various places. A number of containers are located at first floor level with ad hoc stair access that does not comply with building regulations.



### 2. PEDESTRIAN & VEHICULAR CONFLICT/ ESCAPE ROUTE

There are no clear routes between vehicles and pedestrians at the entrance. There needs to be clear separation so as to avoid conflict and prevent potential accidents. The only escape route from the boatyard in case of emergency or fire is from the front entrance vehicular and pedestrian gates.



### 3. INSUFFICIENT DRAINAGE

There are area of the boardyard where this currently insufficient surface water drainage. This is particularly obvious to areas in the middle of the boardyard where there is ponding, drainage channels that are completely blocked and heavy vehicles have degraded areas of tarmac



### 4. EXISTING GROUND SUBSIDENCE

There is significant ground subsidence to the area shown dotted red on the plan adjacent. It is intended that a significant part of this area be used for the storage of heavy boats for which the area is currently not suitable for.



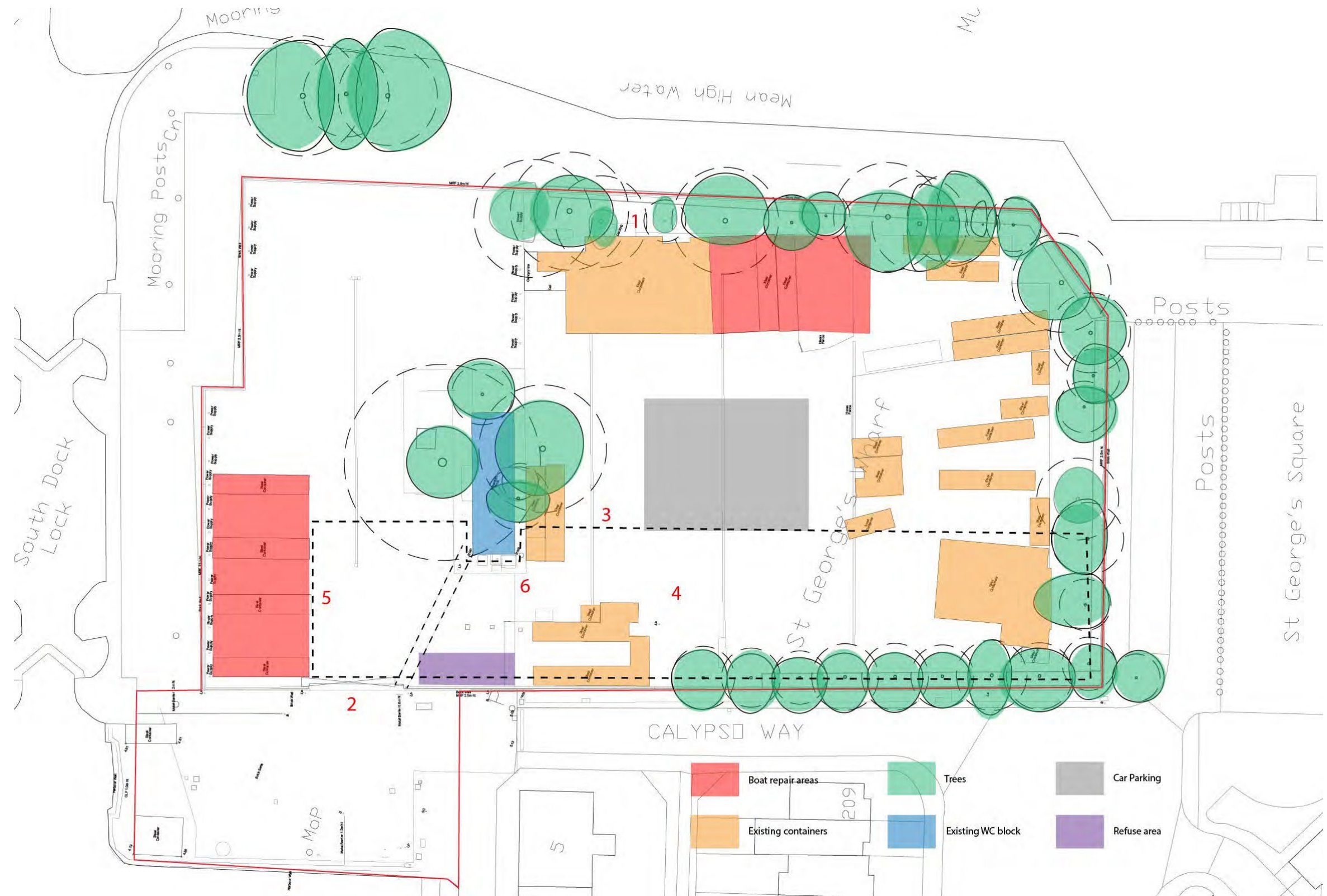
### 5. WORKSHOP ON MAIN VEHICULAR ROUTE

There is a workshop adjacent to the existing amenity building that opens onto the main vehicular route during working hours that is a safety issue.



### 6. CONGESTED ACCESS

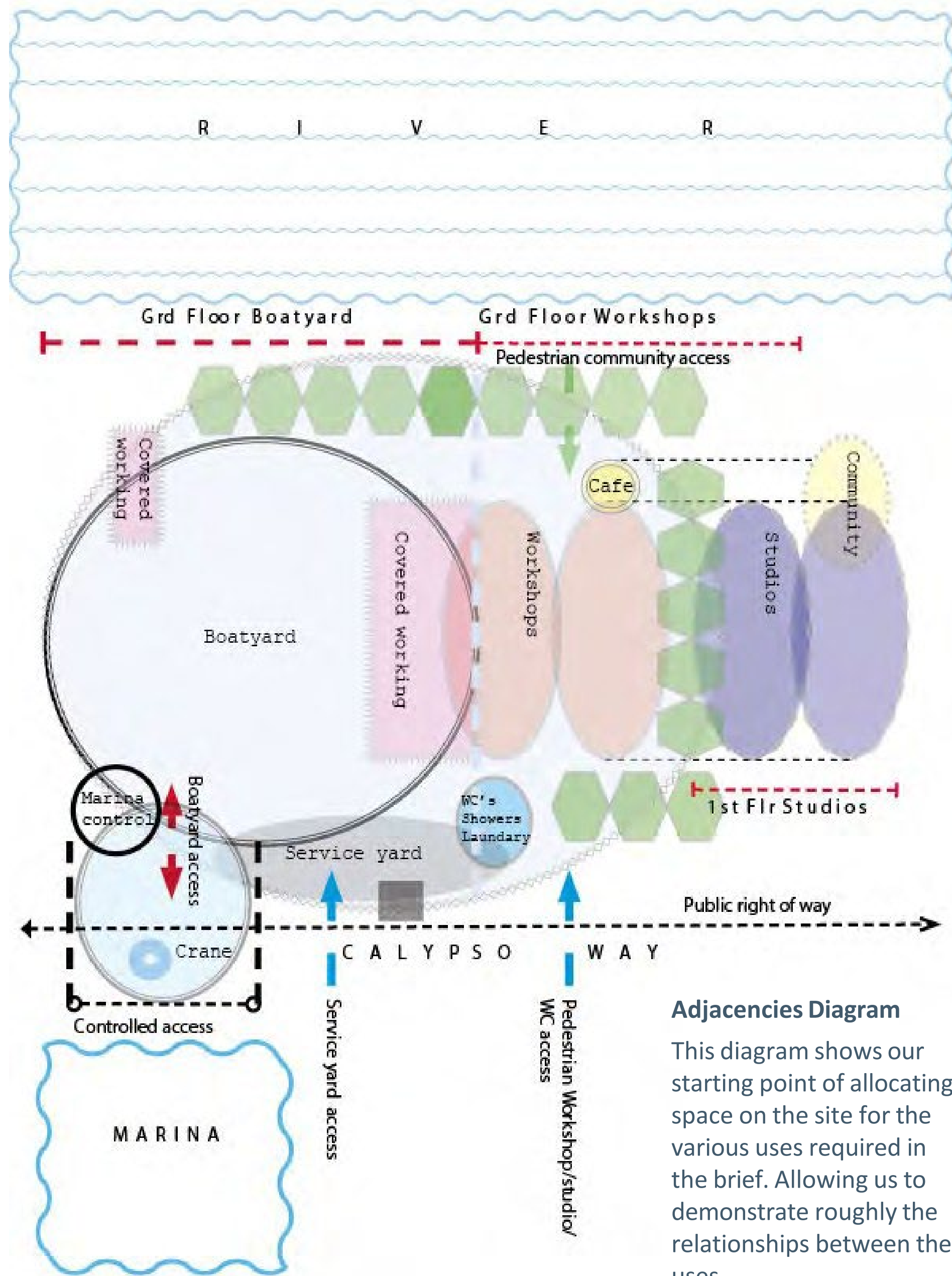
The area close to the entrance adjacent to the amenity block is congested and it is difficult to manoeuvre through into the main boatyard area. This area should be reorganised to provided better access





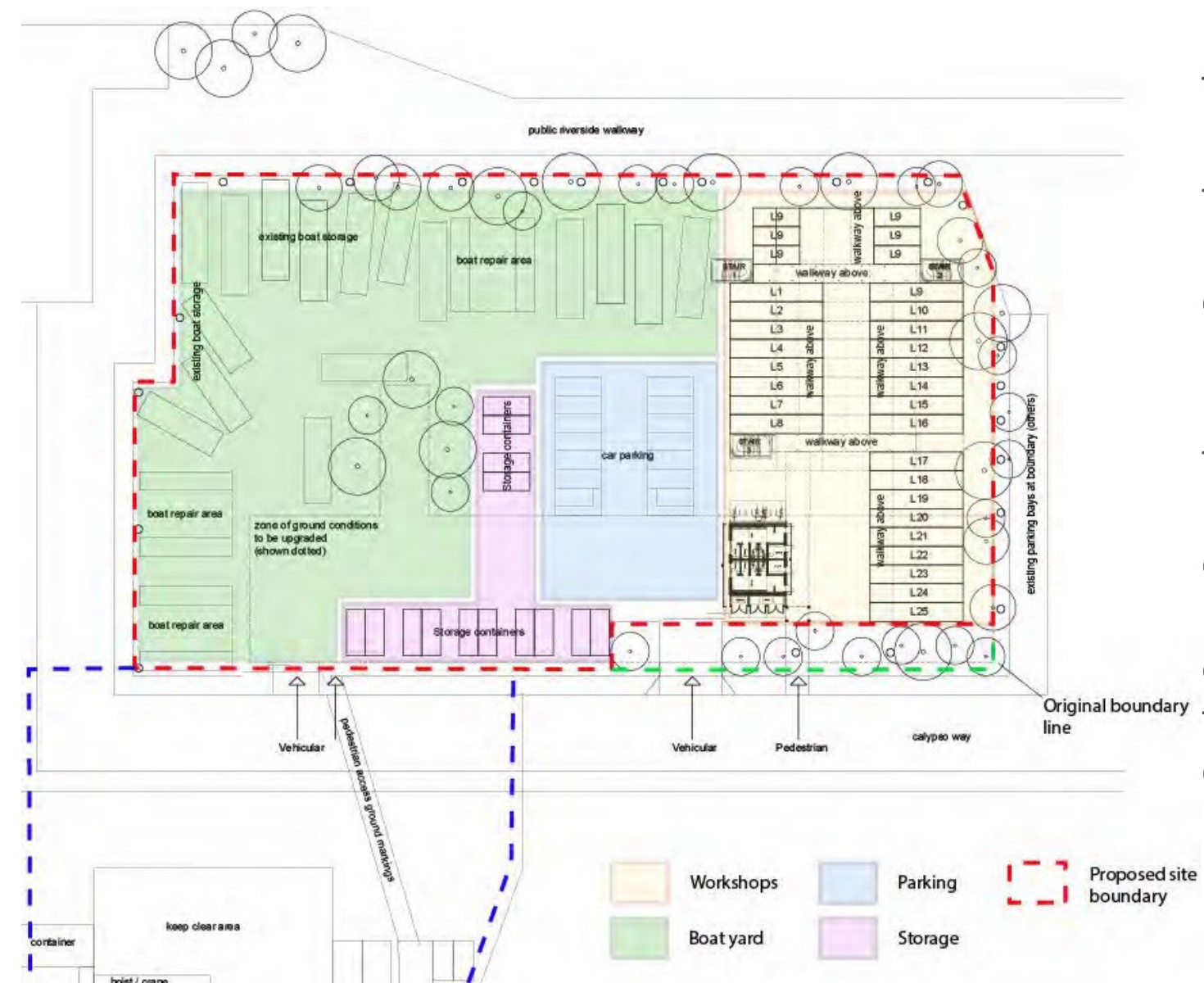
# SOUTH DOCK MARINA HEALTH & SAFETY PROJECT

## Design Development



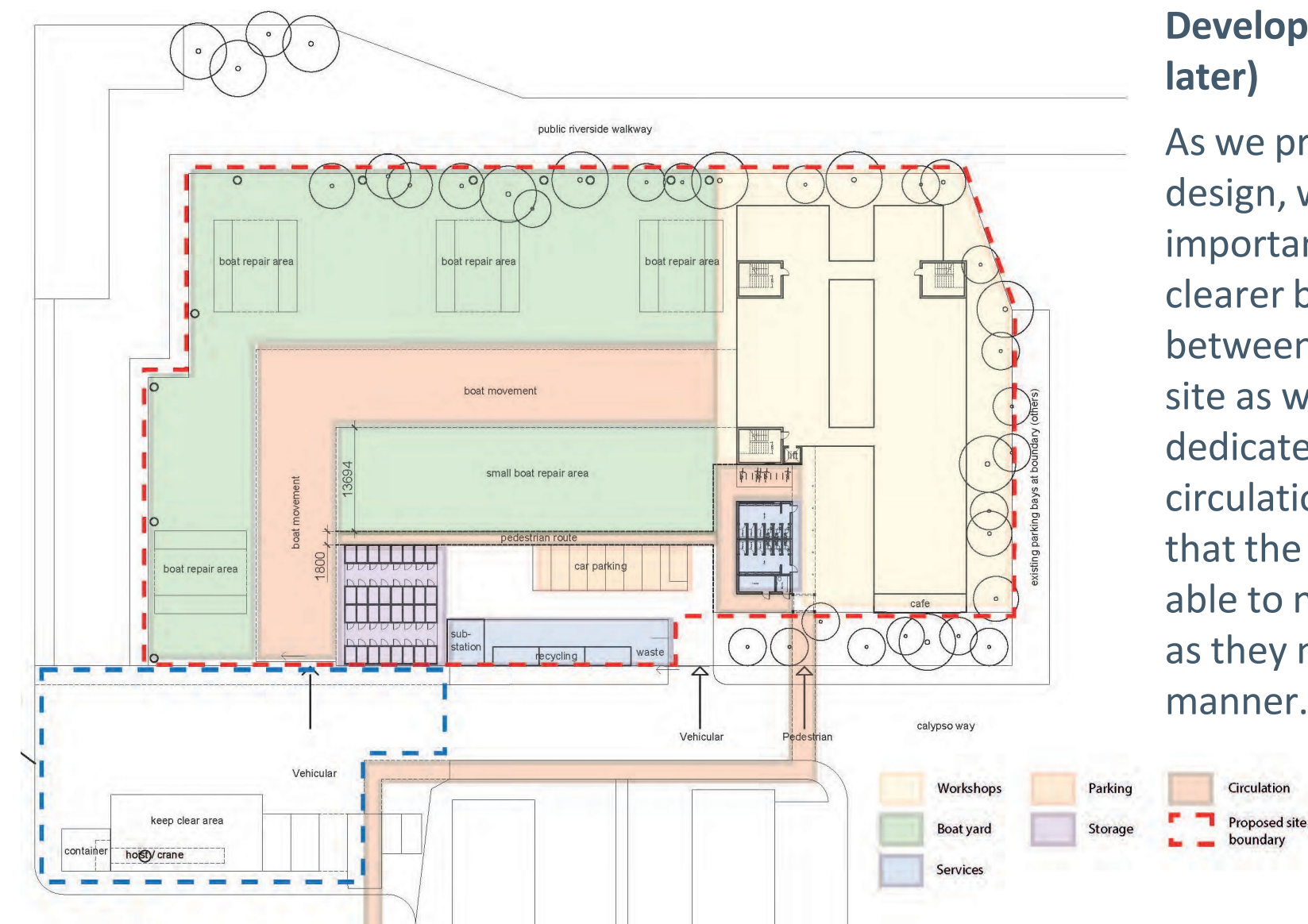
### Adjacencies Diagram

This diagram shows our starting point of allocating space on the site for the various uses required in the brief. Allowing us to demonstrate roughly the relationships between the uses.



### Initial first design

This initial design shows how we were able to take the ideas demonstrated in the adjacencies diagram and put them into practice within a more accurate context of the site and needs of the users. There is a strong emphasis on how the site is to be divided up based on use and providing the safest usage and circulation.

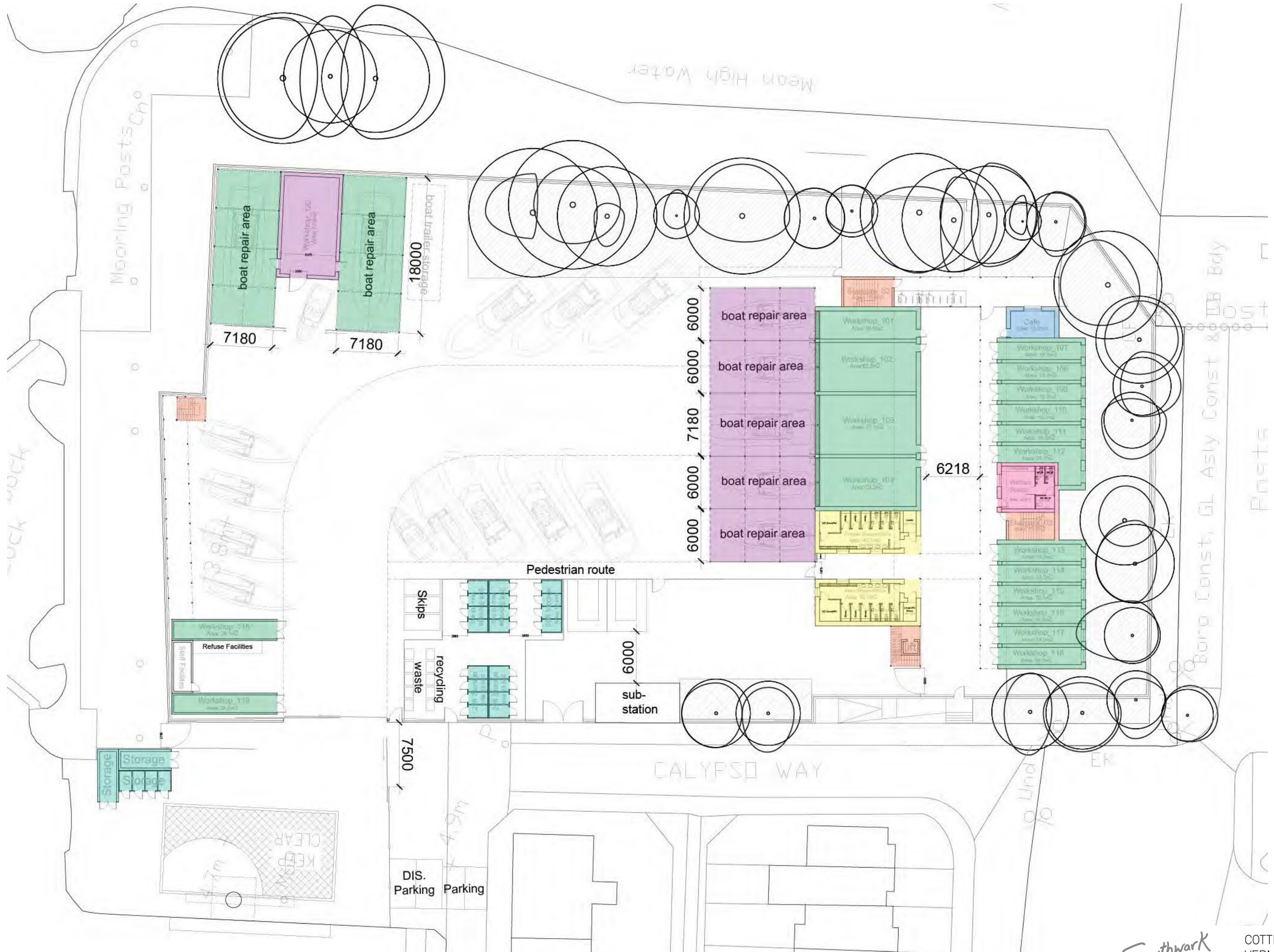


### Developed Design (6mo later)

As we progressed the design, we found it important to create clearer boundaries between the uses of the site as well as providing dedicated and adequate circulation routes so that the users are easily able to navigate the site as they need in a safe manner.



# SOUTH DOCK MARINA HEALTH & SAFETY PROJECT

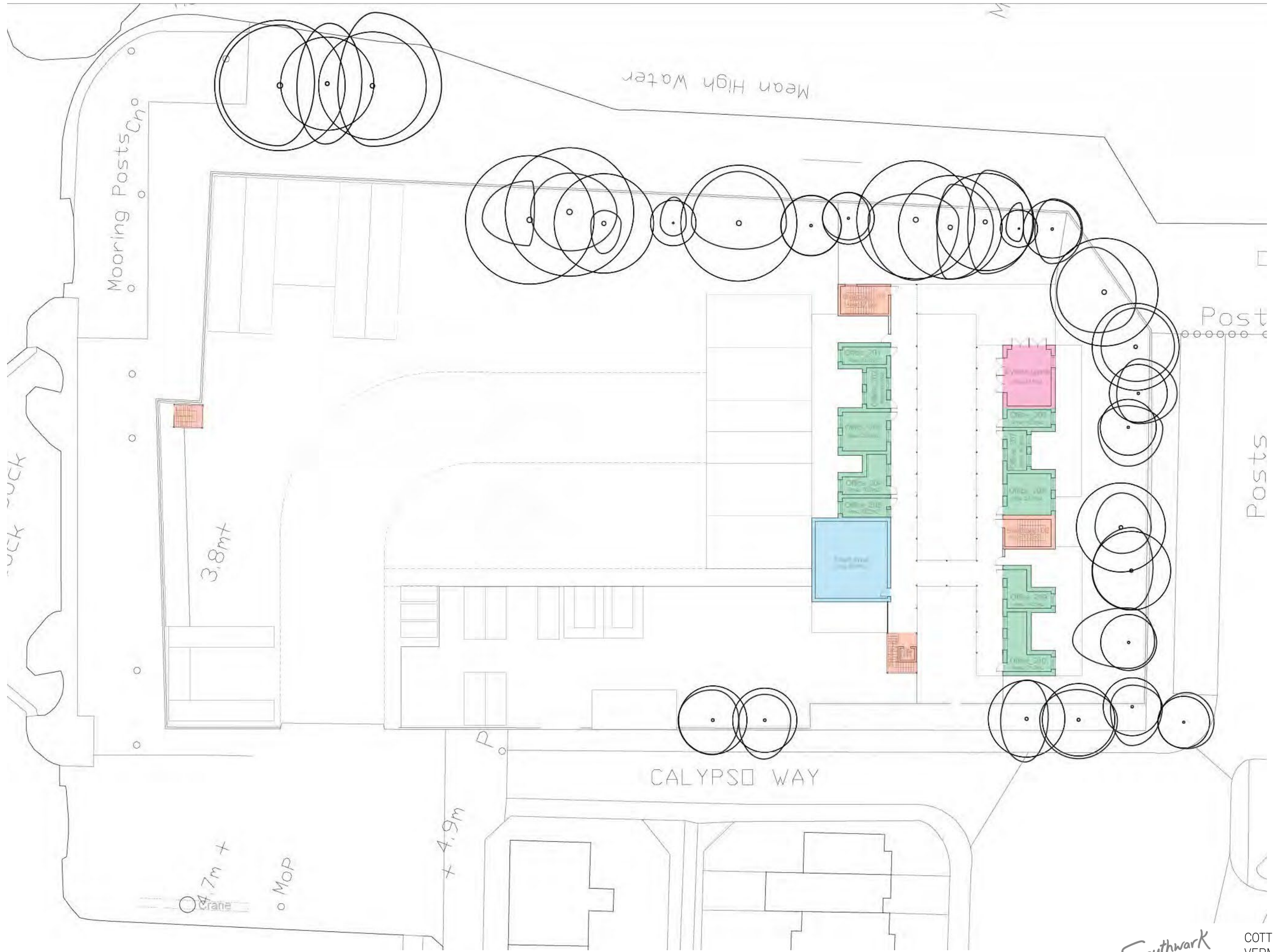


- Cafe
- Covered boat repair
- Berth holders  
WC/ facilities
- Amenities space
- Workshops
- Storage
- Core circulation

Proposed Ground Floor Plan



# SOUTH DOCK MARINA HEALTH & SAFETY PROJECT



- Shared space
- Office/studios
- Services
- Core circulation

Proposed First Floor Plan

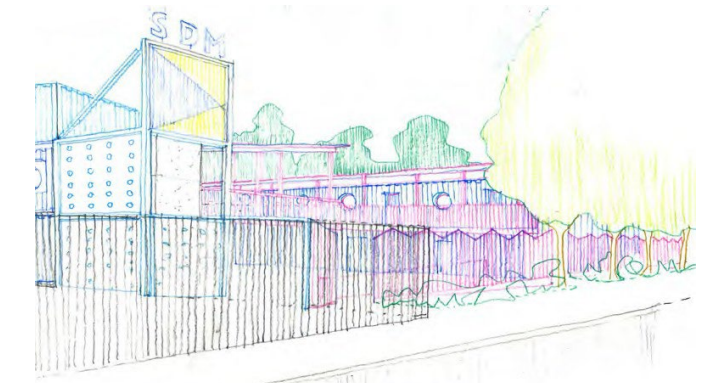




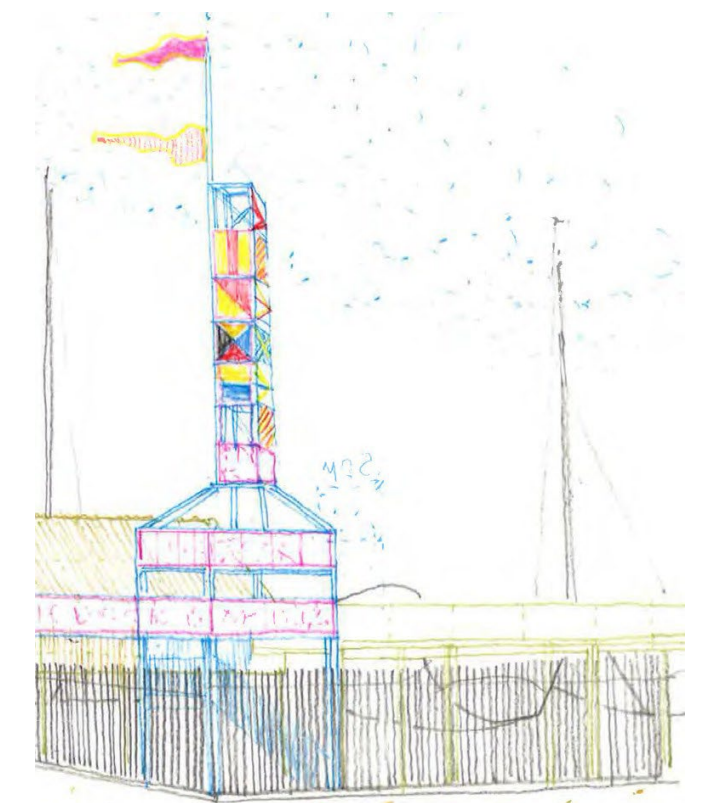
Aerial view of site



View from river



View from Calypso Way



View of tower from lock

## Main Entrance Elevation

