

# Public notice

## London Streetspace Programme – Walworth Removal of width restriction trials



1. Southwark Council hereby GIVES NOTICE under section 10 of the Road Traffic Regulation Act 1984<sup>1</sup> that existing experimental order, The London Borough of Southwark (Width restriction) (Newington trials) Experimental Traffic Order 2019<sup>2</sup>, will cease to operate; facilitating the removal of width restrictions in any part of COOKS ROAD, MANOR PLACE and PENTON PLACE.
2. For more information about this notice please contact Southwark Council's Highways team by e-mail [Highways@southwark.gov.uk](mailto:Highways@southwark.gov.uk)
3. Copies of this notice and plans may be found online at [www.southwark.gov.uk/trafficorders](http://www.southwark.gov.uk/trafficorders), paper copies may be obtained from or viewed at Highways, Southwark Council, Environment and Leisure, 3rd floor hub 2, 160 Tooley Street, London SE1 2QH – by appointment only. Please email [traffic.orders@southwark.gov.uk](mailto:traffic.orders@southwark.gov.uk) or call 020 7525 3497, for details.

Dated 25 June 2020

**Nicky Costin** - Parking and Network Management Business Unit Manager, Regulatory Services

---

<sup>1</sup> [1984 c.27](#)

<sup>2</sup> [LBS 2019/025](#)

# Statement of reasons

## London Streetspace Programme – Walworth

### Removal of width restriction trials



Existing road width restrictions (part of an on-going trial<sup>1</sup>) will be removed from Cooks Road, Manor Place and Penton Place to accommodate the London Streetspace programme - Walworth, in the London Borough of Southwark.

The London Streetspace Programme aims to create more space on the streets so people can walk and cycle safely and observe social distancing. This will also help to ease pressure on public transport which has seen a significant reduction in capacity. One of the key areas that we are looking at as part of this programme is reducing traffic on residential streets and creating low-traffic corridors so that more people can walk and cycle as part of their daily routine. By creating a low-traffic neighbourhood, we hope to re-purpose the street for play and activity.

Existing width restrictions are to be removed from the below locations:

Street	Ward	Description
COOKS ROAD	Newington	Between its junctions with Fleming Road/Otto Street and Forsyth Gardens.
MANOR PLACE	Newington	Between its junctions with Braganza Street/Chapter Road and Delverton Road.
PENTON PLACE	Newington	Between its junctions with Alberta Street and Iliffe Street.

Dated 25 June 2020

For more information contact:-

**Rachel Gates**

Transport Projects

Highways

[Highways@southwark.gov.uk](mailto:Highways@southwark.gov.uk)

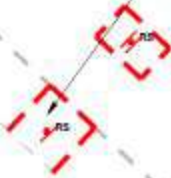
---

<sup>1</sup> The London Borough of Southwark (Width restriction) (Newington trials) Experimental Traffic Order 2019



COOKS ROAD

Width restriction islands and signs to be removed



103 to 107

FORSYTH GARDENS



TSRGD Dia.816 sign and 954-4 supplementary plate to be placed on existing lighting column and new post.



COOKS ROAD

NOTES

1. ALL DIMENSIONS ARE IN METRES UNLESS OTHERWISE STATED. DO NOT SCALE FROM THIS DRAWING.
2. ALL ITEMS SHOWN IN GREY ARE TO REMAIN UNLESS OTHERWISE STATED.
3. THE INFORMATION SHOWN ON THIS DRAWING IS BASED ON ORDINANCE SURVEY DATA.

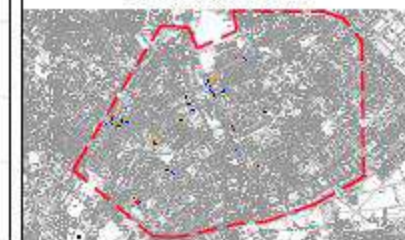
KEY

COOKS ROAD/FORSYTH GARDENS

- PS PROPOSED SIGN ON EXISTING LIGHTING COLUMN
- PS PROPOSED SIGN ON NEW POST
- RS SIGN AND POST TO BE REMOVED
- REMOVED KERBLINE

**DRAFT**

LOCATION PLAN




REV	DATE	REVISION/DESCRIPTION/DETAIL	DWG. BY	CHECK. BY	APPROV. BY



PROJECT  
LOWER EMISSIONS NEIGHBORHOOD  
WALWORTH ROAD

TITLE  
COOKS ROAD

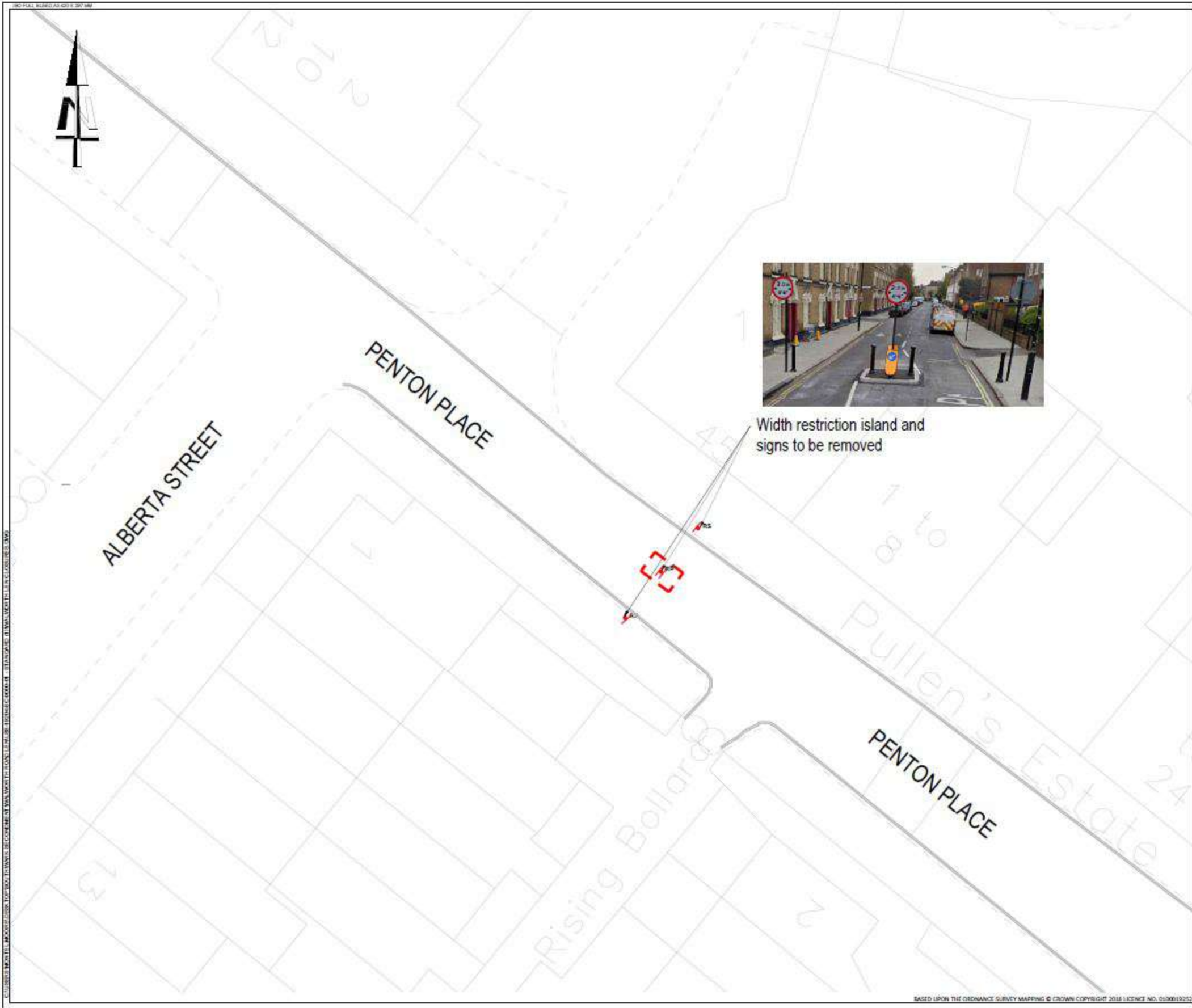
STATUS  
PHASE ONE

SCALE  
1:200

DRAWING NO.  
LBS/19204/SC/0000/09

DATE DRAWN  
06 MAY 2020

DATE ISSUED  
11 JUNE 2020



Width restriction island and signs to be removed

**NOTES**

1. ALL DIMENSIONS ARE IN METRES UNLESS OTHERWISE STATED. DO NOT SCALE FROM THIS DRAWING.
2. ALL ITEMS SHOWN IN GREY ARE TO REMAIN UNLESS OTHERWISE STATED.
3. THE INFORMATION SHOWN ON THIS DRAWING IS BASED ON ORDINANCE SURVEY DATA.

**KEY**

- PENTON PLACE / ALBERTA STREET
- EXISTING MARKINGS (GREY)
  - SIGN AND POST TO BE REMOVED
  - REMOVED KERBLINE

**DRAFT**

**LOCATION PLAN**



REV	DATE	REVISION/DESCRIPTION/DETAILS	DRN BY	CHKD BY	APPROV BY



**PROJECT**  
LOWER EMISSIONS NEIGHBORHOOD  
WALWORTH ROAD

**TITLE**  
PENTON PLACE/ALBERTA STREET

<b>SCALE</b>	PHASE ONE	DESIGN	MM
<b>SCALE</b>	1:200	CHECKED	MM
<b>DATE DRAWN</b>	LBS/19204/SC/0000/28	APPROVED	MM
<b>DATE DRAWN</b>	06 MAY 2020	DATE ISSUED	11 JUNE 2020





# Walworth Garden Farm

MANOR PLACE

Point closure at Manor Place. No vehicles permitted except cycles.

Single yellow lines to be replaced with double yellow lines.

Removal of width restriction

BRAGANZA STREET

CHAPTER ROAD

### NOTES

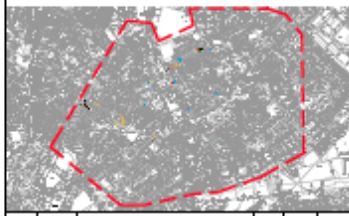
1. ALL DIMENSIONS ARE IN METRES UNLESS OTHERWISE STATED. DO NOT SCALE FROM THIS DRAWING.
2. ALL ITEMS SHOWN IN GREY ARE TO REMAIN UNLESS OTHERWISE STATED.

### KEY

- MAJOR PLACE BRAGANZA STREET
- --- --- EXISTING MARKINGS (GREY)
  - - - - - MARKINGS TO BE REMOVED (RED)
  - - - - - NEW/REVISED MARKINGS
  - PROPOSED BUILDOUT

**DRAFT**

### LOCATION PLAN



REV	DATE	REVISION DESCRIPTION / DETAILS	CHKD BY	CHKD DATE	APP'D BY	APP'D DATE



PROJECT: LOWER EMISSIONS NEIGHBORHOOD  
WALWORTH ROAD

TITLE: MANOR PLACE-BRAGANZA STREET

STATUS: PHASE ONE	DRAWN: MM
SCALE: 1:200	CHECKED: MM
DRAWING NO: LBS/19204/SC/0000/1/5	APPROVED: JPS
DATE DRAWN: 06 MAY 2020	DATE REVISION: 21 MAY 2020