

Your Council Tax 2020-21

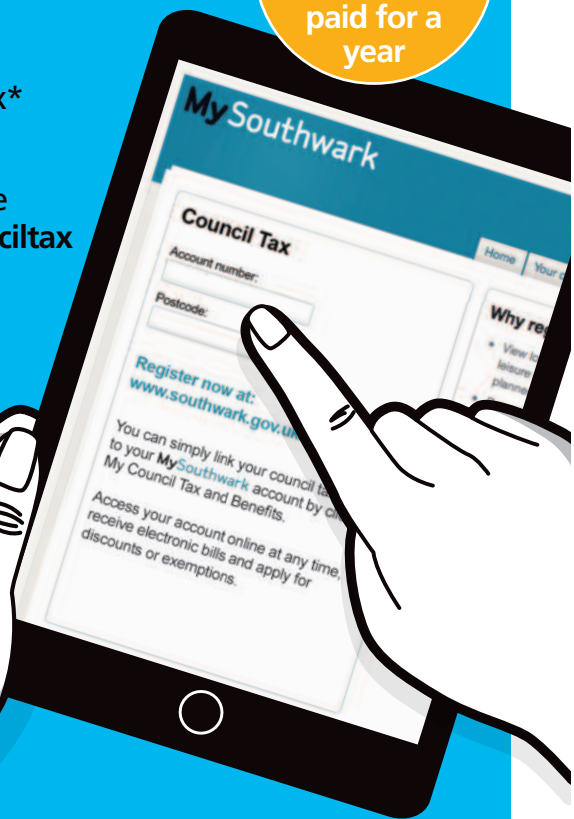
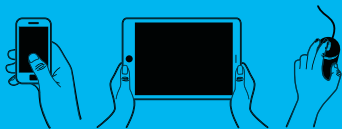


Council tax prize draw

All new and existing Direct Debit payers registered with a **MySouthwark** account linked to their council tax account by 31 May 2020 will have the chance to get their council tax* paid for a year.

Terms and conditions apply see www.southwark.gov.uk/counciltax

Be the lucky winner and have your council tax paid for a year



*Up to a maximum of the Band D council tax charge

 @lb_southwark  facebook.com/southwarkcouncil

Southwark
Council
southwark.gov.uk

Message from Cllr Peter John, Leader of Southwark Council



Dear resident,

It is now ten years since local communities and councils began to feel the impact of austerity, and in that time Southwark has faced enormous funding cuts. But this has also been a decade of delivery in Southwark, with new homes, new jobs, new libraries, new schools and new opportunities delivered for you, our residents.

The council tax you pay is just one of the ways we fund the services you value. Over the last decade, by encouraging growth, building homes and attracting businesses, we have managed to increase the amount of council tax and business rates we generate. So while our funding from government has halved, putting huge pressure on our budgets, we have managed to keep offering vital public services and investing in the things people want and need. That includes protecting social care for our most vulnerable and older residents, offering improved mental health support for our young people, expanding free swim and gym in our leisure centres, helping residents into work, and investing in our parks and playgrounds.

Even with this extra investment, there is not enough money in the pot to cope with the growing demands and pressures on our services, particularly education, homelessness and ensuring our young people are kept safe and not drawn into violent crime.

Together we also need to address the biggest challenge we all face, which is tackling the climate emergency. The council has been working to reduce its emissions for some time, cutting them by 37 per cent since 2010, but we now need bold action to ensure the council and the whole borough is working to become carbon neutral by 2030. This will require significant investment, which is why, in this year's budget, we have allocated £2m to help start this work.

We have therefore taken the difficult decision to raise council tax in line with most other councils. While we know any increase won't be welcome, the impact for most residents will be around 73p per week, and we offer council tax relief for those who are least able to pay. Half of this additional money will be ringfenced for social care with the rest ensuring that we protect the services you rely on.

My commitment to you is that we will continue to focus on fulfilling our fairer future promises, offering value for money and spending money as if it were from our own pocket, to deliver the very best for all our residents.

A handwritten signature in dark ink, appearing to read 'Peter John'.

Councillor Peter John OBE
Leader of Southwark Council

Southwark Council's budget

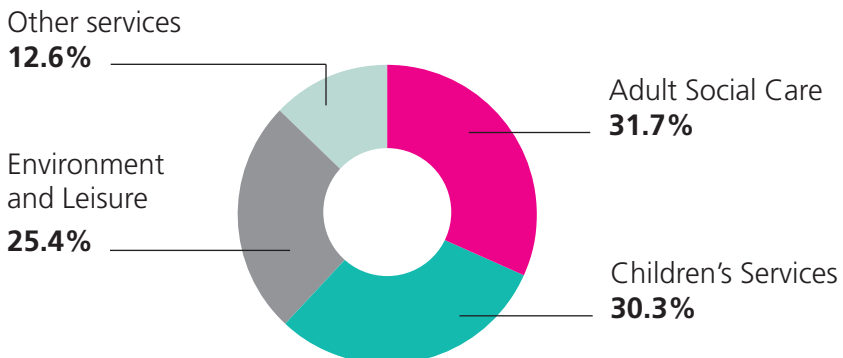
About the council's budget

Southwark Council's revenue budget for 2020-21 represents the estimated cost of delivering our services. The amount we can spend each year is limited by the amount of grant we receive from government and income received from other sources, such as council tax, fees and charges and any business rate growth that we can retain. Since 2010-11, like other councils, Southwark has experienced significant reductions in government funding. Despite the challenges, the council remains committed to protecting services for the most vulnerable people, cutting waste and mitigating as much of the impact of cuts as possible.

In addition to government funding cuts over recent years, the council has also had to manage the continuing increasing demands and pressures on front-line services, particularly adult social care, children's services, homelessness services and welfare support, as well as fund local government pay and inflation costs.

Due to changes in government funding our revenue budget is reliant upon the council raising funds through council tax and business rates with some revenue support grant from government. In order to present a balanced revenue budget for 2020-21 that continues to protect services for our most vulnerable residents, the council is raising council tax by a local increase of 1.99% and 2% for the adult social care precept, a total of 3.99%.

Where is the money being spent?



Southwark Council's budget continued

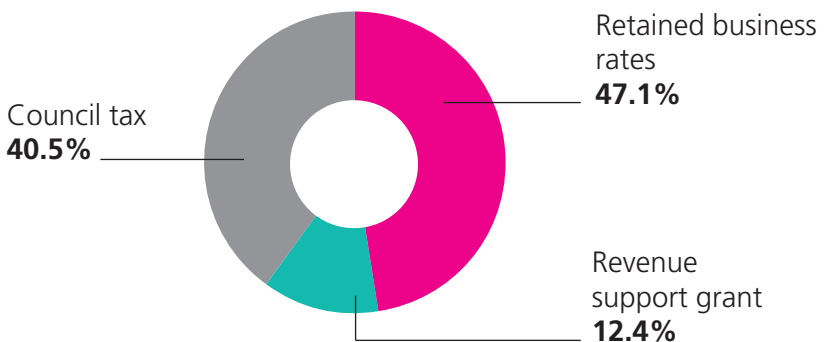
Adult social care precept

It was agreed by council to increase the adult social care precept in 2020-21 by 2% in line with government guidance. This will raise an additional £2.3m in 2020-21 and future years. The social care spending plans assume this level of additional funding will be available. A 2% increase for the adult social care precept for 2020-21 equates to £21.32 for a band D equivalent.

Southwark Council's finances

Retained business rates will fund 47.1% of the council's budget for 2020-21. 12.4% will be from revenue support grant and 40.5% from the council tax that you pay.

Where do the council's resources come from?



How is Southwark Council's part of the bill worked out?

To work out the tax for each band, we divide Southwark's total council tax requirement by a number known as the council tax base. This gives the council tax for band D, with the other bands calculated as a proportion of this.

This year band D is £1,108.81 which is £117,848,762 divided by 106,284 (council tax base).

Southwark Council's finances continued

What other services does my bill pay for?

Part of your council tax meets the costs of the Greater London Authority (GLA). This is known as the GLA precept and it covers the cost of police, fire and transport for the whole of London. The Mayor of London and the London Assembly set the GLA precept and Southwark Council has no control over this contribution. This year the GLA precept has been increased by 3.61% for band D. See pages 8-10 for details of the GLA's 2020-21 budget.

Southwark Council's income and expenditure

The table on page 7 explains our budget. The revenue budget is mainly funded by revenue support grant, council tax and business rates. Schools are funded through the dedicated schools grant and other government grants.

Other key information

At 31 March 2019, the council's uncommitted reserves were £21 million, investments £126 million and borrowing £677 million. Southwark Council employs approximately 4,310 staff (headcount).

How is Southwark Council tax calculated?

In 2020-21 a band D charge will be £1,108.81 which is a £42.54 increase from the band D council tax charge in 2019-20 as shown in the table below.

	£
2019-20 band D charge	1,066.27
Add 3.99% increase	42.54
2020-21 band D charge	1,108.81

Southwark Council's income and expenditure

2019-20 Net Budget £m		2020-21 Expenditure £m	2020-21 Income £m	2020-21 Net Budget £m
86.9	Children's services	323.4	(234.2)	89.2
94.8	Adult social care	145.6	(52.3)	93.3
5.6	Traffic, transport and parking	25.1	(20.6)	4.5
8.7	Highways	15.4	(6.5)	8.9
6.7	Planning and economic development	18.7	(12.0)	6.7
9.2	Recreation and tourism	15.4	(6.0)	9.4
7.0	Libraries	7.5	(0.5)	7.0
3.3	Environmental health	9.0	(5.0)	4.0
32.2	Refuse collection and disposal	64.4	(30.2)	34.2
8.3	Revenue and benefits	166.2	(157.9)	8.3
27.7	Other services	243.0	(214.2)	28.8
290.4	Total spending on services	1,033.7	(739.4)	294.3
290.4	Southwark's budget requirement			294.3
(176.0)	Retained business rates, and top up			(138.6)
0	Revenue support grant			(36.4)
(3.9)	Council tax surplus from previous year			(1.4)
110.5	Southwark's council tax requirement			117.9
103,662	Divided by council tax base			106,284
1,066.27	Which equals Southwark's band D council tax			1,108.81
33.2	GLA tax requirement			35.3
103,662	Divided by council tax base			106,284
320.51	Which equals band D council tax			332.07
1,386.78	Total band D council tax			1,440.88

(Brackets = negative number)

Register online for MySouthwark at www.southwark.gov.uk/mysouthwark
Simply link your council tax account by clicking on My Council Tax and Benefits
and you can access your account at any time, receive electronic bills and apply
for discounts or exemptions.

GLA Precept information

GREATER LONDON AUTHORITY

Introduction

The Mayor of London's budget for the 2020-21 financial year is built around his vision of a city where nobody is left behind, and opportunities are open to all. It supports London's future growth and economic success, building on our city's thriving economy, extraordinary creativity, tolerance, diversity and openness to the world.

This year's budget will provide resources to improve the key services Londoners need. This includes delivering more genuinely affordable homes, keeping transport fares as low as possible and tackling toxic air pollution and the climate emergency. The budget also provides resources to support jobs and growth, help rough sleepers, invest in youth services and make London a fairer and cleaner place to live. Moreover, it provides extra resources from council tax and business rates for the Metropolitan Police and London Fire Brigade to keep Londoners safe. Over £100 million in additional funding is being provided by the Mayor to the police, for violence reduction initiatives and to improve opportunities for young Londoners. This will help offset the ongoing impact of the reductions in government funding over the last decade.

Council tax for GLA Services

The GLA's share of the council tax for a typical Band D property has been increased by £11.56 (or 22p per week) to £332.07. The additional income raised will fund the Metropolitan Police and the London Fire Brigade. Council taxpayers in the City of London, which has its own police force, will pay £79.94.

Council Tax (£)	2019-20	Change	2020-21
MOPAC (Met Police)	242.13	10.00	252.13
LFEPA (Fire Brigade)	53.00	2.28	55.28
GLA	23.38	-0.69	22.69
TfL (Transport)	2.00	-0.03	1.97
Total (£)	320.51	11.56	332.07

Investing in frontline services

This budget will enable the Mayor to fulfil his key priorities for London.

These include:

- making transport more affordable. Single bus fares, single pay as you go fares on the Tube and DLR and Santander cycle hire scheme charges have been frozen again in 2020. This will save travellers around £40 million this year. The bus and tram one hour Hopper fare introduced by the current Mayor will also continue;

- continuing to tackle London's housing crisis, using £4.8 billion of funding to support starts of 116,000 new affordable homes by 2022;
- ensuring the Metropolitan Police have the resources they need to tackle violent crime – the Mayor has funded 1,300 additional police officer posts from locally raised council tax and business rates revenues;
- tackling the underlying causes of crime, with £25 million of extra funding to support disadvantaged young Londoners access positive opportunities and constructive activities that allow them to make the most of their potential as well as providing £34 million extra for new violence reduction initiatives;
- protecting vulnerable children and women at risk of abuse and domestic violence;
- tackling the climate emergency through the creation of a new £50 million Green New Deal for London fund;
- providing enough resources to the London Fire Brigade (LFB) to ensure that first and second fire engines arrive at emergency incidents, on average, within six and eight minutes respectively. The Mayor is also providing resources to rollout a transformation programme so that the LFB can implement the recommendations of the Grenfell fire inquiry. This includes investing in the new vehicles and equipment required;
- working with London boroughs to maintain existing concessionary travel and assisted door to door transport schemes. This includes free 24 hour travel for the over 60s, the disabled, armed forces personnel in uniform and eligible war veterans and protecting the Taxicard and Dial a Ride schemes. Discounts on travelcards are also available for apprentices;
- increasing capacity and introducing new trains on the London Underground and working to complete the Elizabeth line (formerly Crossrail), the Northern line extension to Battersea Power station and the Overground extension to Barking Riverside as soon as possible. The Mayor will also maintain the Night Tube and Night Overground services;
- investing £2.3 billion in Healthy Streets by 2024 to fund projects to enable more walking and cycling across London. The Mayor will also expand the Ultra Low Emission Zone to the North and South Circular roads in autumn 2021 to tackle local air pollution;

- making public transport more accessible for everyone. By 2024 nearly 40 per cent of tube stations are expected to be step free. All new Elizabeth line stations will be step free; and
- funding projects to bring Londoners together, promote arts, sports and culture including honouring London's host city commitments for the UEFA 2020 football championships, help tackle inequality, improve the environment, and boost London's economy. The Mayor is providing funding for around 1,000 cultural and community events across London and for the planting of thousands more street trees over the next year.

Summary of GLA budget

The following tables compare the GLA group's spending for 2020-21 with last year and set out why it has changed. The GLA's gross expenditure is higher this year. This is mainly due to the impact of extra investment planned by the Mayor in transport, policing, adult education and the fire service as well as additional business rates receipts being paid over to the Government to support local services elsewhere in England. Overall the council tax requirement has increased because of the extra funding for the Metropolitan Police and the London Fire Brigade. There has also been a 1.6 per cent

increase in London's residential property taxbase.

Find out more about our budget at: www.london.gov.uk/budget (tel: 020 7983 4000).

How the GLA Group budget is funded (£ million)	2020-21
Gross expenditure	13,365.9
Government grants and retained business rates	-5,486.6
Fares, charges and other income	-6,787.3
Use of reserves	-81.1
Amount met by council taxpayers (£m)	1,010.9

Changes in spending (£ million)	2020-21
2019-20 council tax requirement	960.6
Inflation	244.8
Efficiencies and other savings	-150.8
New initiatives	512.1
Other changes (for example fares revenue and government grants)	-555.8
Amount met by council taxpayers	1,010.9

London Pensions Fund Authority

The London Pensions Fund Authority (LPFA) raises a levy each year to meet expenditure on premature retirement compensation and outstanding personnel matters for which LPFA is responsible and cannot charge to the pension fund. These payments relate to

former employees of the Greater London Council (GLC), the Inner London Education Authority (ILEA) and the London Residuary Body (LRB).

For 2020-21, the income to be raised by levies is set out below. The Greater London levy is payable in all boroughs, the Inner London levy only in Inner London Boroughs (including the City of London).

The figures show the total to be raised and, in brackets, the percentage change on the previous year.

Inner London	£13,065,200
Greater London	£10,317,753
Total	£23,382,953 (0%)

Environment Agency

The Environment Agency is a levying body for its Flood and Coastal Erosion Risk Management Functions under the Flood and Water Management Act 2010 and the Environment Agency (Levies) (England and Wales) Regulations 2011.

The Environment Agency has powers in respect of flood and coastal erosion risk management for 5200 kilometres of main river and along tidal and sea defences in the area of the Thames Regional Flood and Coastal Committee. Money is spent on the construction of new flood defence schemes, the maintenance of the river

system and existing flood defences together with the operation of a flood warning system and management of the risk of coastal erosion.

The financial details are:

Thames Regional Flood and Coastal Committee

	2019-20 '000s	2020-21 '000s
Gross expenditure	100,146	101,860
Levies raised	11,577	11,807
Total council tax base	5,085	5,163

The majority of funding for flood defence comes directly from the Department for the Environment, Food and Rural Affairs (Defra). However, under the new Partnership Funding rule not all schemes will attract full central funding. To provide local funding for local priorities and contributions for partnership funding the Regional Flood and Coastal Committees recommend through the Environment Agency a local levy.

A change in the gross budgeted expenditure between years reflects the programme of works for both capital and revenue needed by the Regional Flood and Coastal Committee to which you contribute. The total Local Levy raised by this committee has increased by 1.99%.

The total Local Levy raised has increased from £11,576,942 in 2019-20 to £11,807,323 for 2020-21.

Lee Valley Regional Park Authority

Lee Valley Regional Park is a unique leisure, sports and environmental destination for all residents of London, Essex and Hertfordshire. The 26 mile long, 10,000 acre Park, much of it formerly derelict land, is partly funded by a levy on the council tax. This year there has been a 0% increase in this levy. Find out more about hundreds of great days out, world class sports venues and award winning parklands at www.visitleevalley.org.uk

Further details on how this budget is spent and the amount each council contributes can be found at www.leevalleypark.org.uk

Budget/Levy Changes – 2019-20 to 2020-21

	2019-20 £m	2020-21 £m
Authority Operating Expenditure	10.9	15.1
Authority Operating Income	(3.0)	(7.9)
Net Service Operating Costs	7.9	7.2
Financing Costs		
– Debt servicing/repayments	0.5	0.9
– Capital investment	1.2	1.2
Total Net Expenditure	9.6	9.3
Total Levy	(9.6)	(9.6)

REGISTER TO VOTE

MAKE
YOUR
MARK

It is important to be on the register of electors

Here are a few benefits when you register to vote:

- You can vote in elections that take place within Southwark
- Your credit rating may improve by being on the register
- You can vote by post

Voting by post is quick and easy – download a form from www.southwark.gov.uk/postalvotes and send the completed form to: Southwark Council, Electoral Services, PO Box 64529, London SE1P 5LX

The easiest way to register is by going online at

WWW.GOV.UK/REGISTER-TO-VOTE

📞 020 7525 7373

✉ electoralenquiries@southwark.gov.uk

🐦 @lb_southwark 📘 facebook.com/southwarkcouncil

We will only use the information you give us for electoral purposes. We will look after personal information securely as laid out in the Data Protection Act 2018 and the General Data Protection Regulation. We may occasionally need to pass on personal information to other public bodies or organisations as a result of legal duties and powers. If you want to find out more information of how Southwark looks after your information, please read our Corporate Privacy Notice at www.southwark.gov.uk/corporate-data-privacy-notice

Southwark
Council
southwark.gov.uk

What do Southwark foster carers look like?

Like you, like us...

Southwark foster carers living in Southwark can claim 100% council tax relief.

Care to join us?






☎ 0800 952 0707 🌐 www.southwark.gov.uk/foster

Support 24/7, training and allowance provided.

Southwark
Council
southwark.gov.uk

How much is my bill?

This table shows you how much council tax you will pay this year according to the valuation band your property falls into.

Band	 A	 B	 C	 D	 E	 F	 G	 H
Value of property on April 1 1991	£ Under 40,000	£ 40,001 – 52,000	£ 52,001 – 68,000	£ 68,001 – 88,000	£ 88,001 – 120,000	£ 120,001 – 160,000	£ 160,001 – 320,000	£ Over 320,000
Southwark element (£)	739.21	862.41	985.61	1,108.81	1,355.21	1,601.61	1,848.02	2,217.62
GLA element (£)	221.38	258.28	295.17	332.07	405.86	479.66	553.45	664.14
Overall council tax (£)	960.59	1,120.69	1,280.78	1,440.88	1,761.07	2,081.27	2,401.47	2,881.76

How to pay your bill

Council tax is normally payable in ten monthly instalments from April to January each year. You can choose to pay over 12 months from April to March and we will issue a revised bill once you've requested this. Payments can be made on the 1st, 8th, 15th, 20th or 25th of each month. For more information please visit:

www.southwark.gov.uk/paycounciltax

We no longer issue swipe cards for you to make payment. You can now use the barcode on the front of your bill to pay at any PayPoint outlet or Post Office so please keep it safe.

What are the benefits to signing up to MySouthwark?

If you sign up for a MySouthwark account you'll be able to view statements, copies of your bills, details of discounts and a list of future payments – making it much easier to manage your account. This year you could win the chance to have your council tax paid for a year (see page 2).

How can I access my council tax account online?

If you haven't already, you'll need to register for a MySouthwark account. Go to www.southwark.gov.uk/viewcounciltax for more details.

What if I need to tell you about a change?

You should notify us of any changes to your circumstances or any changes regarding members of your household. Please visit:

www.southwark.gov.uk/ctaxchanges

Exemptions and discounts

Empty properties

There are no exemptions or discounts available for empty properties. Where a property has remained empty for a period of two years or more, an additional 100% premium will apply from the 1 April 2019, so the amount payable will be 200% of the council tax charge.

Where a property has remained empty for a period of five years or more, an additional 200% premium will apply from the 1 April 2020, so the amount payable will be 300% of the council tax charge.

Discounts

You can claim a 25% discount if you live alone or only with children under 18. Discounts may apply in other circumstances, for example if you live with students, school leavers or carers. For further information regarding discounts, please visit:

www.southwark.gov.uk/ctaxdiscounts

Exemptions

In certain circumstances, properties are exempt from council tax, for example where all occupiers are full time students or a property is unoccupied because the person responsible for council tax lives in a care home. For further information regarding exemptions, please visit: www.southwark.gov.uk/ctaxexemptions

Can I claim disabled relief?

If your home has been adapted to meet the needs of a disabled person, you may qualify for a reduction in your council tax. Please visit:

www.southwark.gov.uk/ctaxdisabledrelief

For further information (including all circumstances in which a discount applies) and to apply for an exemption, discount or reduction, please visit:

www.southwark.gov.uk/council-tax/reducing-your-bill

Southwark foster carers

Approved Southwark residents fostering Southwark children can claim 100% relief on their council tax this year. Please visit: www.southwark.gov.uk/fostering

Southwark care leavers

Southwark care leavers aged between 18 and 24 who live in the borough get a 100% discount on their council tax bills, so they don't have to pay any council tax. For more information please visit: www.southwark.gov.uk/ctaxcareleaver

Valuations

Your council tax charge is calculated using the banding provided by the Valuation Office Agency (VOA). If you think this is incorrect and you would like further information, please contact:

 03000 501 501

 ctsouth@voa.gsi.gov.uk

 www.voa.gov.uk

Change of circumstances

Keeping us up to date with any changes in your circumstances helps us to get your council tax right and avoid any problems later on. This includes:

- If you're moving home, contact us as soon as possible with details of the landlord or new owner and your new address and moving date
- If the property becomes unoccupied and substantially unfurnished
- If you are claiming an exemption (e.g. because your property is unoccupied), you must inform us when someone moves in

To report a change in circumstances, please visit:

www.southwark.gov.uk/ctaxchanges

Failure to tell us within 21 days of any change in circumstances that could affect your liability to pay council tax or your entitlement to a reduction can lead to a minimum penalty of £70 or a prosecution.

Council tax reduction scheme

If you are on a low income, you might be entitled to some help towards paying your council tax.

You may be entitled to a council tax reduction. Reductions are based on:

- Your council tax bill
- Your personal circumstances and those of your partner
- The income of any other adults in your household

More information can be found at: www.southwark.gov.uk/benefits

If you are receiving housing benefit and would like to make a claim for council tax reduction, you may complete a shortened form at:

www.southwark.gov.uk/CTRform

If you are receiving Universal Credit and would like to make a claim for council tax reduction, you can do so online at: www.southwark.gov.uk/ctaxhousingbenefit

You can get further advice and information about welfare benefits from the following sources:

Southwark Citizens Advice (CAB)

 0344 499 4134

 www.citizensadvice.org.uk

Drop in council tax debt advice clinic

First Tuesday of the month 5pm to 7pm at Bermondsey CAB, 8 Market Place, Southwark Park Road, London SE16 3UQ.

Other useful sources of welfare benefits and money advice and information can be accessed from the following websites: www.southwarkadvice.org.uk and www.moneyadvice.org.uk

Extra help with benefits

The Southwark Local Support Team provides support to vulnerable residents in Southwark, including those who are experiencing severe financial hardship and have seen their benefits reduced as a result of recent welfare changes.

The Southwark Local Support Team can:

- Check that you are receiving all the benefits that you and your household are entitled to
- Help you complete application forms for benefits
- Provide emergency support to customers in a emergency, crisis or in financial hardship

If you or a member of your household are vulnerable or are experiencing severe financial hardship, and want to check that you are receiving all the benefits that you are entitled to, you can contact us at:

 localsupport@southwark.gov.uk

 www.southwark.gov.uk/localsupport

Paying your bill

Your council tax pays for the services you value. From collecting your rubbish, providing care for older people and children, to libraries, parks, leisure centres and playgrounds.

The simplest and most convenient way to pay your council tax is by Direct Debit. For more information and to set up a Direct Debit, please visit:

www.southwark.gov.uk/CTDDform

If you're having trouble paying your council tax bill get in touch to find out what advice and support is available to you. The council tax team can work out a repayment plan for you and find out if you are entitled to a discount, exemption, or reduction. We can also help you with your application for the council tax reduction scheme.

If you do not pay

The council is responsible for ensuring it collects all council tax that is due. If you do not pay your council tax, it will impact on all residents in the borough who use valued council services. The council will take all appropriate action to recover what is due. This can ultimately lead to prosecution and committal to prison.

Payment

You can make a payment by visiting: www.southwark.gov.uk/payforit or call our 24 hour automated payment line on **0345 600 0611**

Appeals

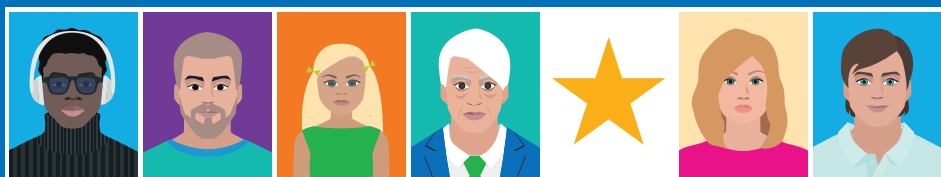
If you feel that you are not liable to pay council tax, or you believe that we have made a mistake in calculating your bill, you must contact us first, so we can consider your case.

If you would like to know more about the appeals procedure, including the use of valuation tribunals, please visit: www.southwark.gov.uk/ctaxappeals

Southwark just isn't Southwark without its EU citizens.



WE WANT YOU TO STAY



Register for settled status today

To avoid missing out, apply by **31 December 2020**
at www.gov.uk/eusettledstatus

Get help with your application by calling **0300 123 7379**
or visiting www.southwark.gov.uk/EUsettlement

Southwark
Council
southwark.gov.uk